

KPSL apps

Kuwait Positioning System Locator



Developed By
Khaled Al-Salem (2011)
Email: ksalem@kisir.edu.kw

KPSL apps

Kuwait Positioning System Locator (KPSL apps) is a navigation system for Kuwait Area. This apps was setup for two option for user as:

- 1- For fishing area locator. This apps has about 150 fishing area in Kuwait water were stored in , also has the ability for user create his own data file and user can get his current location recorded. Also this app can display for user the fishing area within setup distant from his current location.
- 2- For locating areas of interest such as Location of Shopping Center, hotels, Camping Areas, Entertainment Places, Different type of Restaurants, Wedding Lounges and Hospitals (Public and Private) where user can select and navigate by the apps.

KPSL app can send sms or email the data with an image attached.
For Fisher, KPSL apps show daily hydrodynamic information prediction (Tide Level info.) from different station in Kuwait waters.

Apps Description

To Start the Apps From fig 1, select the button in red circle, fig 2 will display to select which option user want to use.



Fig1

- In Fig 2 at the top user will find two options to use as
- 1- Fishing area selection and navigation.
 - 2- Location of Shopping Center, hotels, Camping Areas, Entertainment Places, Different type of Restaurants, Wedding Lounges and Hospitals (Public and Private) where user can navigate by the apps (Kuwait flag button)



Fig2

If user select option 1 from fig 2 for fishing area locator fig 3 will display for user for more data entry information.

In fig 3 user should select first the fishing location bottom to select which fishing area want to go as shown in fig 4.





Fig3



Fig4

After user select the area, fig 5 will display for user where the coordinates will show as longitude and latitude in degrees.

Then user should select Back Button  to go back and display the select area coordinates on the Kuwait water map by dropping a red color pin as shown in fig 6 After pressing on 

Then user should follow or go to the red pin .



Fig 5



Fig 6

If user want to know how many fishing area around his location within a select distant as shown in fig 7 where user enter the distant from the selected pin location. Fig 8 displays the fishing area available around the pin location.



Fig 7



Fig 8

From fig 9 the user has another options where he can do as:

- 1- User can record his current location
- 2- User can calculate the distant from his current location to the select location where the pin dropped in waters in meter.
- 3- User can create his own data file where he can store his private fishing area coordinates.



Fig 9

If user select option 2 from fig 2 for Kuwait area locator fig 10 will display for user for more data entry information

In Fig 10 user has a number of selection category in Kuwait as follows:

- 1- Location of shopping centers
- 2- Entertainment area
- 3- Camping / hunting area
- 4- Hotels in Kuwait
- 5- Restaurants?
- 6- Wedding Lounges in Kuwait
- 7- Hospital (public and private)



Fig 10


If user select from fig 10 Location of shopping centers
 fig 11 will display for user for which shopping center user should select. Fig 12 will
 display after user selected from fig 11 for more conformation of his selection.




Fig 11



Fig 12

Then user should select Back Button  to go back and display the select item by dropping a red color pin as shown in fig 13.

After pressing on 

Then user should follow or go to the red pin where user current location is the blue circles shown in fig 13.

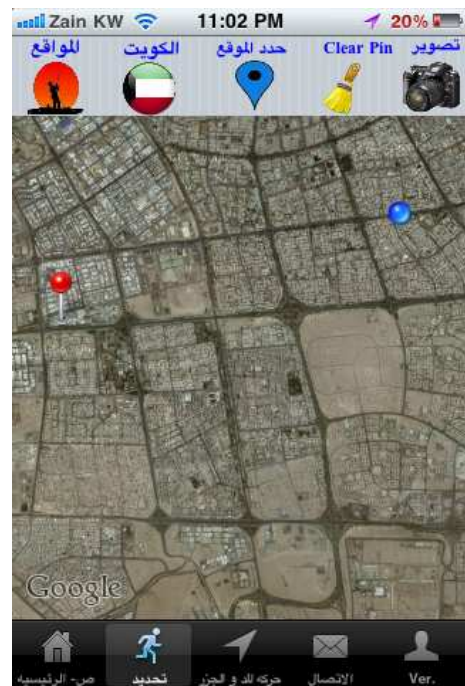


Fig 13

User can take a map screen shot by using the camera button as shown in fig 14 also user send the image by email.



Fig 14

Another important information that KPSL apps can provide for user who interest in fishing is daily tide information from fig 1 User should select



button fig 15 will display for user

With a selection of different station in Kuwait waters for daily tide level prediction

If select a station the user must select



button to start

Tide prediction model fig 16 will display the tidal results.



Fig 15

Fig 16 will display daily information of the tide level as

- 1- High tide and low tide time
- 2- Tide type (Neap/spring)
- 3- Now tide status (High or low)
- 4- 24 hour tide data graph.



Fig 16

Data Export:

User can send any data from KPSL apps in two way

- 1- SMS short message
- 2- E mail information

In fig 1 user should select



button to display fig 17 for user to send sms or email.

Fig 17 and fig 18 show how user can send email data with an attached image.



Fig 17



Fig 18