



Welcome to
Mac OS X

...the Center of Your Digital Lifestyle

Install Mac OS X and start exploring what you can do with it.

Install

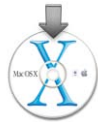
1. Insert the Mac OS X Install Disc 1 CD.



Read Before You
Install.pdf

Read this document
for important news
about installing Mac OS X.

2. Double-click
Install Mac OS X.



3. Follow the onscreen
instructions.

▶ See “Advice About Installing” later in this book for more information.

4. When you are asked, insert the
Install Disc 2 CD.

Set Up

Create a user account

Create Your Account

With Mac OS X, everyone who uses the computer can have an account with their own settings and a place to keep their documents.

Set up your account now. You can add accounts for others later.

Name:

Short Name: Enter 255 lowercase characters or fewer, with no spaces.

Password:

Verify:

Password Hint: (optional)
Enter something that will help you remember your password.

Picture:  Select a picture from the list above.

Remember your name and password exactly as you type it, including capitalization.

If you are installing Mac OS X for the first time, follow the onscreen instructions to set up Mac OS X after installation finishes. When you set up Mac OS X, you create a user account. Be sure to remember the name and password you give this user account because you will use it in the future.

Set up your connection information

Get Internet Ready

To set up your Internet access, please choose an option, then click Continue.

I'll use my existing Internet service.





I'm not ready to connect to the Internet.

Set up your connection information now. It's easy and you can connect to the Internet right away.

It's best to set up your network and Internet connections when you set up Mac OS X. If you don't have an Internet service provider (ISP) or .Mac membership, you can sign up for one when you set up Mac OS X.

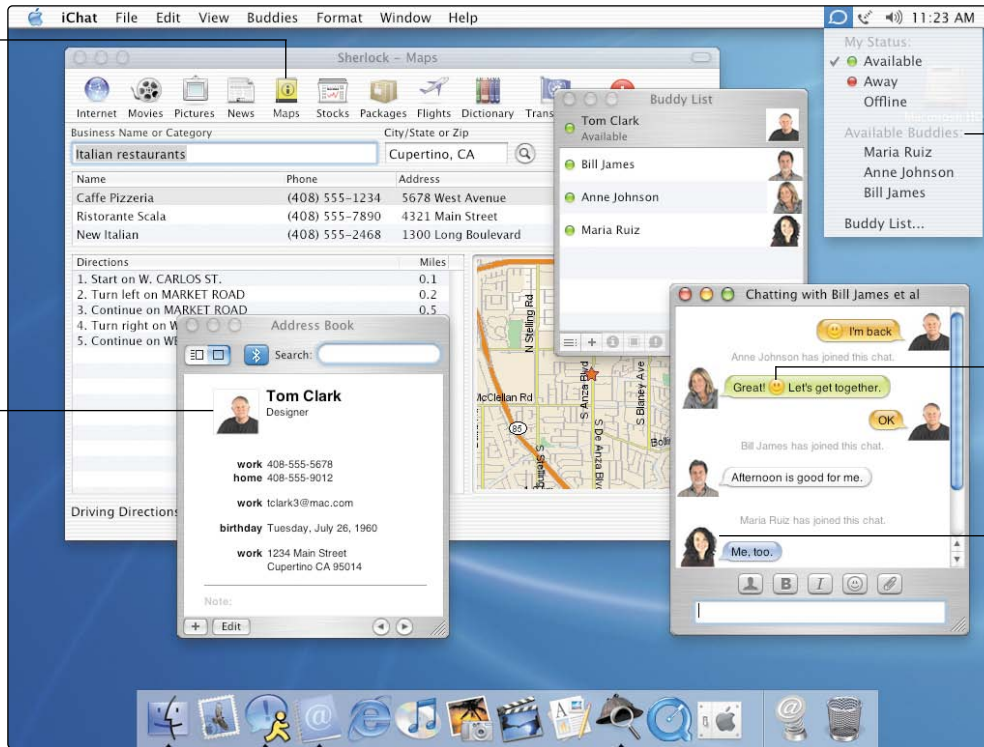
If your computer is on a local network or you want to use an existing ISP and .Mac membership, you need to have your current setup information handy. To learn more, see "Internet Setup Information," later in this book.

Keep in Touch

Chat with friends. Use iChat  to get in touch instantly with your friends. Chat live on your network or the Internet. Breeze through your email. With a sophisticated junk mail filter, Mail  let's you get to the email that's important to you. To find your email, search all your mailboxes at one time. **Keep it together.** Address Book  stores all of your contact information. Send address cards to others in iChat and Mail messages. **Tame the Web.** Use Sherlock  to find a restaurant, track your stocks, and more without ever opening a web browser.

Use the Maps channel to find local businesses.

To use your picture in iChat messages, drag a picture to your card in Address Book.



Use the iChat status menu to see who is available to join a chat.

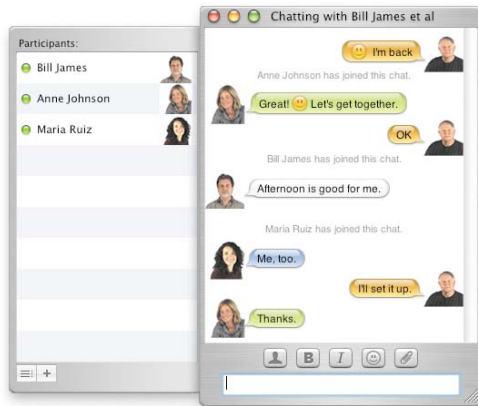
Add a "smiley" to your message for the fun of it.

Pictures show who you're chatting with.

What's New?

Chat live

iChat instant messages let you chat live with friends on your network or your AOL and Mac.com buddies on the Internet. To start a chat, select each person in your Buddy List that you want to join the chat, then choose Invite To Chat from the Buddies menu. After you start a chat, you can add more friends in the same way.

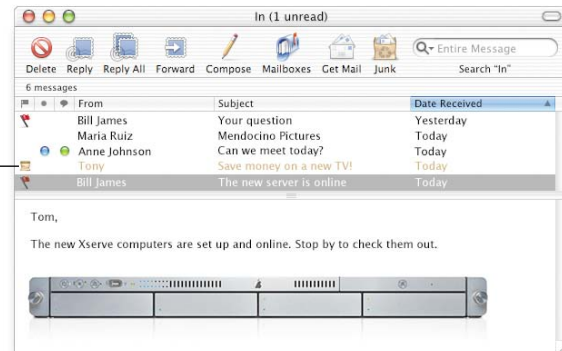


Search iChat Help

How do I add someone to my Buddy List?

Stop the junk

Mail shows junk email using a color and an icon. To train Mail to identify junk email correctly, select email it incorrectly identifies as junk and click Not Junk. Select junk email it misses and click Junk. When Mail identifies your junk email correctly, you can have Mail automatically move junk email out of your inbox.



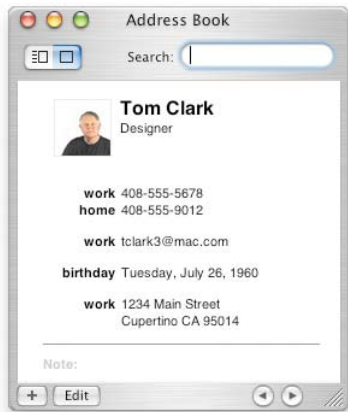
This message is marked as junk email.

Search Mail Help

How do I automatically process email?

Store your contacts

Address Book stores all your contact information in one place. You can store as many phone numbers, email addresses, and instant message addresses as you need for each person. You can also include the person's birthday. To select the picture you want to appear when you chat, drag the picture to your address card.

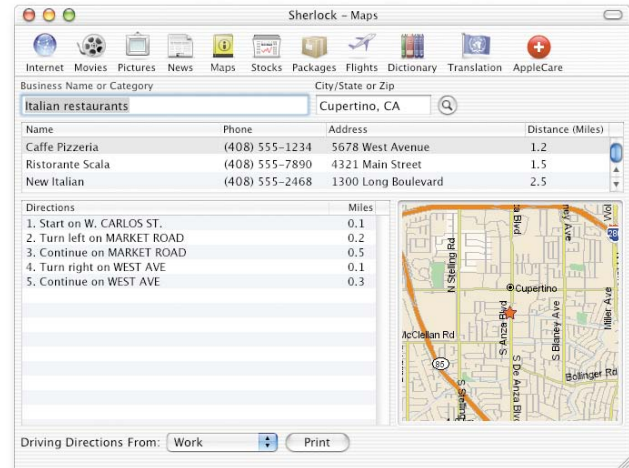


Search Mac Help

How do I add people to Address Book?

Find your way

Use Sherlock 3 to find local businesses, such as restaurants. Type the name or category of a business and the location where you want to search, then press Return. Select a business in the list to see a map showing its location along with driving directions from your current location.



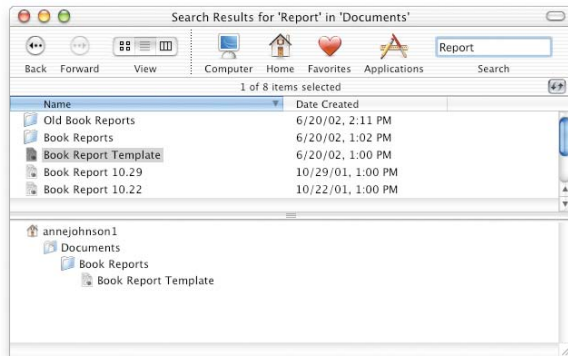
Search Mac Help

How do I define locations for Sherlock 3?

More Highlights

Find your way

The Finder lets you search for your files in the Finder window. Select the disk, folder, or network server where you want to search, type what you're looking for in the Search field, and press Return. The list shows the items that match your search. Select an item in the list to see where it's located. Double-click an item to open it or drag to move it.



Search Mac Help

How do I find files?

Work with Windows

Mac OS X easily connects with Windows computers on home networks and corporate networks. You can see Windows servers and shared Windows computers in the Finder. Turn on Windows File Sharing in Sharing preferences to let Windows users see your Mac on the network just like a Windows computer. In addition, Internet Connect lets you connect to Windows networks using VPN (PPTP).

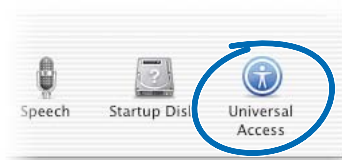


Search Mac Help

How do I access Windows computers?

Accessibility

You can use Universal Access preferences to set up your computer to work best for you. To help you see the screen better, you can zoom in or switch to white-on-black display. To help you control your computer, use Mouse Keys to move the pointer, Sticky Keys to press groups of keys, and Full Keyboard Access to select items. You can also control your computer using spoken commands and have text on the screen spoken to you.

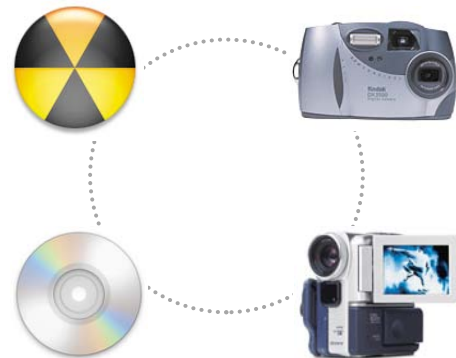


Search Mac Help

How do I hear spoken text?

Use digital devices

It's easy to use digital devices with your computer. Use iTunes to load your favorite tunes onto your iPod. Connect your digital camera or digital video camera to your computer, then use applications such as iMovie and iPhoto to capture your digital pictures and movies. If your computer has a Combo drive or SuperDrive, burn your own CD and DVD discs.



Search Mac Help

How do I control my iPod?

Learn More

Get help

To get answers to your questions about using Mac OS X, choose Mac Help from the Help menu, then type your questions and press Return.



Discover what you need to know to start using Mac OS X.

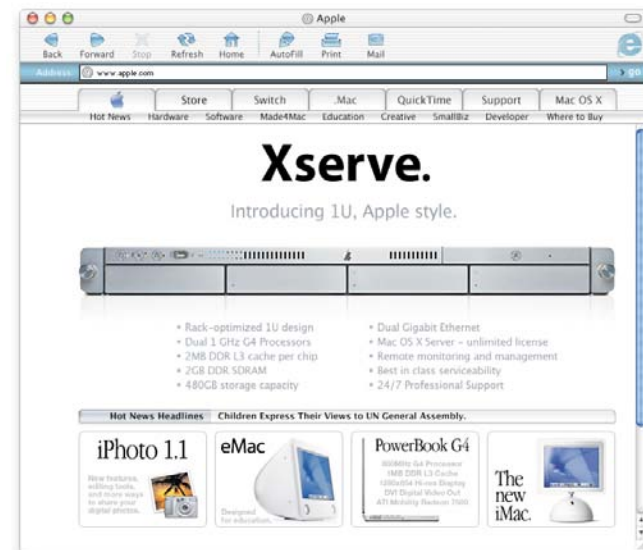
Find out what's new with Mac OS X.

Get connected to get the latest information about Mac OS X.

Visit the Apple Web site

www.apple.com

Find out about Apple products.



Visit the Mac OS X Web site

www.apple.com/macosx

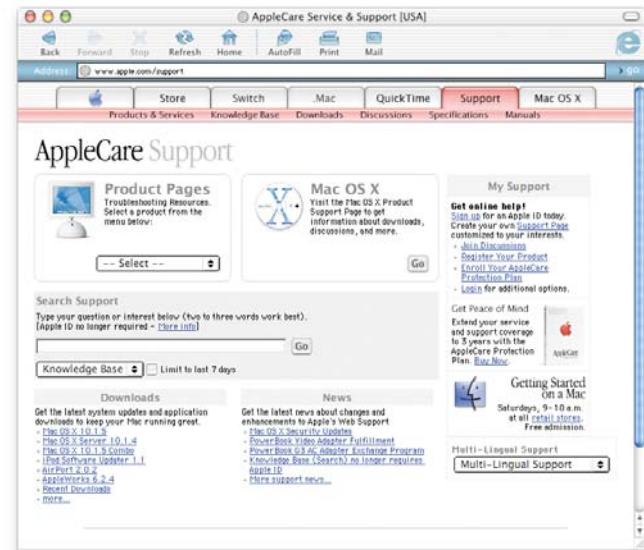
You'll find lots of ideas for what you can do and information about the newest applications for Mac OS X.



Get support

www.apple.com/support

The AppleCare Web site provides support and technical information about Apple products.



- For information about the support available for this product, see the Apple Software Services and Support guide included with Mac OS X.

Advice About Installing

You see a message about updating your computer's firmware.

If you need to update your computer's firmware, do so before you install Mac OS X. For the latest Firmware Updates, visit the Apple software updates Web site: asu.info.apple.com

You want to reinstall all the software on your computer.

Your computer may have come with a later version of Mac OS X installed. To reinstall all the software on your computer, use the CD that came with your computer. To see which version of Mac OS X came with your computer, choose About This Mac from the Apple menu.

You are installing Mac OS X for the first time.

If you are installing Mac OS X for the first time, first decide where you want to install it. You can install Mac OS X on the same disk as Mac OS 9 or on a different one. The disk should be a Mac OS Extended format disk.

When you install, you may want to erase the destination disk or partition your disk. Be sure to back up your disk before you erase or partition it.

After you install Mac OS X, you need to enter your network settings. If you want to use an existing ISP or .Mac membership, you'll need your account information. See "Internet Setup Information," later in this book.

You want to erase the destination disk.

You can erase the destination disk when you install Mac OS X. Select the disk and click Options, then click "Erase and Install." In most cases, choose Mac OS Extended as the format. Be sure to back up your disk before you erase it.

You want to partition your disk.

Partitioning your disk deletes all the files on it. Be sure to back up your disk before you partition it. To partition the disk, open Install Mac OS X and choose Open Disk Utility from the Installer menu. Follow the onscreen instructions. When you are done, complete the installation of Mac OS X.

You want to install the Mac OS X developer software.

Your copy of Mac OS X may include the Developer Tools CD. Only install this software if you want to develop Mac OS X applications. For more information, see "About Developer Tools" on the CD.

You want to reinstall Mac OS X.

To reinstall Mac OS X, insert the Mac OS X Install Disc 1 CD and double-click the Install Mac OS X icon. Select the destination disk and click Options, then select "Archive and Install." This saves your existing Mac OS X system files. If you want to save your existing users and groups, homes, and network settings, select the checkbox.

You want to quit the Installer.

If you start Install Mac OS X but want to quit without installing the software, choose Quit from the Installer menu, then press the mouse button or trackpad button to eject the CD when your computer restarts. Your computer will start up using the last system you were using. For more information about restarting your computer, see the documentation that came with it.

The Installer doesn't appear.

If you double-click Install Mac OS X and the Installer doesn't open, restart your computer while holding down the C key to start up your computer using the CD. For more information about restarting your computer, see the documentation that came with it.

If the Installer still doesn't appear, restart your computer and press the mouse button or trackpad button to eject the Mac OS X CD. After your computer starts up, insert the Mac OS X Install Disc 1 CD and use Startup Disk preferences (Mac OS X) or the Startup Disk control panel (Mac OS 9) to select the CD as your startup disk, then restart your computer.

The Installer cannot repair your disk.

If a message says the Installer cannot repair the disk, you may need to erase it. This deletes all the files on your disk. If you need to back up your disk, quit the Installer and do so. Open Install Mac OS X again and follow the instructions given earlier to erase your disk.

The Installer cannot update the hard disk driver.

The Installer cannot update the drivers for non-Apple hard disks. Use the disk utility recommended by the manufacturer to update the disk's driver before installing Mac OS X. Make sure to use a version of the utility that is compatible with Mac OS X.

Installing Mac OS X was interrupted and now you can't restart.

If this happens, restart your computer while holding down the mouse or trackpad button to eject the CD. Your computer may start up using the last system you were using. If it doesn't and you have another Mac OS X or Mac OS 9 system installed on your computer, restart your computer while holding down the Option key to select a startup disk. If you cannot start up this way, insert a Mac OS 9 CD in your computer and hold down the C key while restarting your computer. Open the Startup Disk control panel and select a startup disk.

Internet Setup Information

If your computer is on a network or you want to use an existing ISP or .Mac membership, you need your existing networking information to set up Mac OS X.

This information may be available on your computer. If you can't find the information or don't know it, contact your Internet service provider (ISP), system administrator, AirPort network administrator, or the person who administers your computer.

Where to find the information you need

- If you currently use Mac OS 9, the information may be in the TCP/IP, Internet, Remote Access, and Modem control panels.
- If you currently use Windows, you may find the information in the Internet, Modems, and Network control panels.
- If you currently use Mac OS X, you will find this information in the Internet and Network preferences panes.
- Your email information may be available in the email application you use.
- If you don't remember your .Mac password, visit the .Mac Web site.

Here is a summary of the information you need to set up Internet access on Mac OS X.

To set up the built-in modem

What you need to know	What you are looking for
Type of configuration	PPP or Manual
If manual, the IP address for your computer	Number that looks like this: 10.201.42.73
Domain Name System (DNS) servers (optional)	Number that looks like this: 10.255.255.255.
Search domains (optional)	Name that looks like this: yourcompany.com
If using PPP, your access phone number	Telephone number
Your user account name and password	Information provided by your ISP

To set up your .Mac membership

What you need to know	What you are looking for
Member name	Name that looks like this: tclark
Password	Provided by .Mac

To set up the built-in Ethernet port or a DSL or cable modem

What you need to know	What you are looking for
Type of TCP/IP connection	Manual, Manually for DHCP, DHCP, or BootP
If manual, the IP address for your computer, subnet mask, and router	Number that looks like this: 10.201.42.73
If manual, the subnet mask and router address	Number that looks like this: 10.255.255.255
If using DHCP and required, the DHCP client ID	Information provided by your system administrator
Domain Name System (DNS) servers (optional)	Number that looks like this: 10.255.255.255.
Search domains (optional)	Name that looks like this: yourcompany.com
If using a proxy server	Number that looks like this: 10.201.42.73 servername.companyname.com

To set up an AirPort wireless connection

What you need to know	What you are looking for
Network name	Provided by your AirPort network administrator. Visible in the AirPort status menu.
Password (if required)	Provided by your AirPort network administrator.

To set up your email account information

What you need to know	What you are looking for
Your email address	Address that looks like this: tclark3@mac.com
Your user account ID	The first part of your email address: tclark3@mac.com
Type of account	IMAP or POP
Incoming mail server	Name that looks like this: mail.mac.com
Outgoing mail server	Name that looks like this: smtp.mac.com

Logging In to Mac OS X

What does “logging in” mean?

Mac OS X is set up to log in automatically using the user account that you created when you set up Mac OS X. If automatic login is turned off, you must enter a user account name and password to log in.

You want to turn off automatic login.

You can turn off automatic login using Accounts preferences.

You need to log in.

To log in, you need to enter a user account name and password. If you see a list of users in the login window, you can click to select your user account and then type your password. If you don't see the list, type both the name and password.

You can select how you want to log in using Accounts preferences. To change Accounts preferences, you must know the name and password for an administrator, such as the first user you created.

You can't log in to your computer.

Make sure you are typing the user account name and password with the same capitalization and punctuation that you used originally.

If you still can't log in, log in as an administrator user, such as the first user you created. Then open Accounts preferences and change your user name or password.

If you don't know an administrator user password and you have the Mac OS X Install Disc 1 CD, start up your computer using the CD, choose Reset Password from the Installer menu, and follow the onscreen instructions.

If you don't have the CD, contact the administrator of your computer.

You forgot your password.

If you forget your password, insert the Mac OS X Install Disc 1 CD and restart your computer while holding down the C key. When the Installer appears, choose Reset Password from the Installer menu.

You can't log in to your remote account.

If your user account information is on a server and you can't log in to your account, see your system administrator.

Using Mac OS X

You want to update Mac OS X.

Periodically, Apple releases updates to Mac OS X and other software. Software Update is set up to check for updates automatically once a week. To check immediately for updates, open the Software Update pane of System Preferences and click Update Now.

When updates are available, they appear in a list. Select the updates you want to install and click Install.

You don't see an update you expected to see.

Some updates do not appear until you have installed an earlier update. After you install an update, check for software updates again to see if there are other updates you want to install.

The Finder doesn't seem to be working.

If the Finder doesn't seem to be working, choose Force Quit from the Apple menu and select the Finder, then click Relaunch. The Finder will restart. You do not need to restart your computer. Your applications will remain open and you will not lose any changes to your documents.

You can't quit an application.

If you can't quit an application, choose Force Quit from the Apple menu, select the application in the list, and click Force Quit. (You do not need to restart your computer.)

Important When you force an application to quit, any unsaved changes to documents open in that application are lost.

If you force quit a Mac OS 9 application, the Classic environment may also stop and other Mac OS 9 applications may quit.

You need to continue using a Mac OS 9 application.

For best results, you should upgrade your applications to the Mac OS X version. You may also need to upgrade software for devices you use with your computer, such as printers, disks, displays, and internal cards. Check with the manufacturers of the devices for the latest updates.

If you cannot find a Mac OS X version of an application, you can continue to use your Mac OS 9 version. When you open a Classic application, the Classic environment starts up using your Mac OS 9 system.

You must have Mac OS 9.1 or later installed to use Classic applications. It's recommended that you use the latest version of Mac OS 9.

Advice About Connecting to the Internet

You cannot connect using your internal modem.

Make sure your modem is connected to the telephone line and that you have entered the correct information in the Network and Internet panes of System Preferences.

If the Connect command is dimmed in the modem status menu, open Network preferences and choose Network Port Configurations from the Show pop-up menu. Select Internal Modem to make it active and click Apply Now.

You cannot connect using a DSL or cable modem.

Make sure your computer is connected to the modem, that the modem is connected to the telephone line or cable, and that the modem is plugged in. Make sure you have entered the correct information in the Network and Internet panes of System Preferences.

You cannot connect using an Ethernet network.

Make sure your computer is properly connected to the network and that you have entered the correct information in the Network and Internet panes of System Preferences.

Make sure Ethernet is active. Open Network preferences and choose Network Port Configurations from the Show pop-up menu. Select Built-in Ethernet to make it active and click Apply Now.

If you continue to have problems, contact your system administrator.

You cannot connect to an AirPort network.

Make sure AirPort is turned on. Choose Turn AirPort On from the AirPort status menu, then select a network. Check the signal level to see if it's strong enough.

If you don't see the Turn AirPort On command, open Network preferences and choose Network Port Configurations from the Show pop-up menu. Select AirPort to make it active and click Apply Now.

If you still can't connect to an AirPort network, see your AirPort network administrator or use AirPort Help.

You see a message that authentication failed.

Be sure you entered the correct information in the PPP pane of Network preferences. If you don't have the information, contact your ISP.

You see a "Server Not Found" message.

Be sure you entered the correct information in Internet preferences. If you don't have the information, contact your ISP or system administrator.

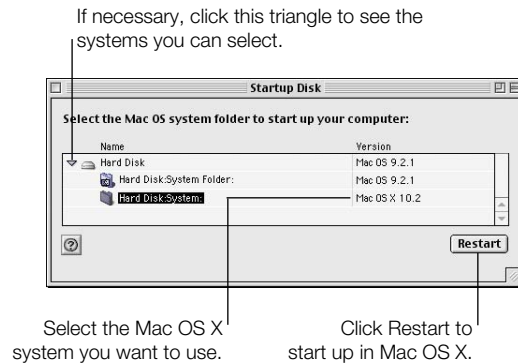
It seems to take a long time to connect.

Be sure you entered the correct information in Network preferences. If you don't have the information, contact your ISP or system administrator.

Switching Startup Disks

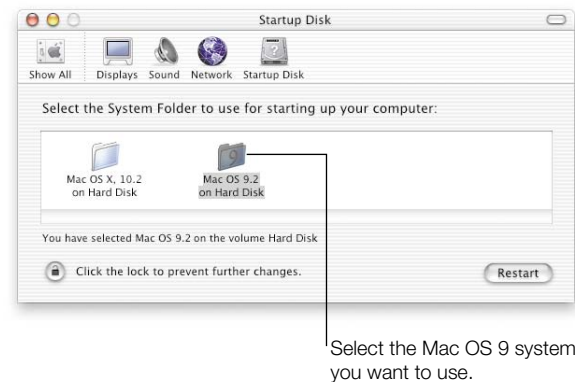
You want to start up your computer using Mac OS X.

If you are using Mac OS 9 and want to start up using Mac OS X, open the Startup Disk control panel. Click the triangle next to the disk name where you have Mac OS X installed. Select your Mac OS X system and click Restart.



You want to start up your computer using Mac OS 9.

To start up using Mac OS 9, open System Preferences and click Startup Disk. Select a Mac OS 9 system disk and click Restart.



Important When you're using Mac OS 9, do not delete, move, or rename any files or folders installed by Mac OS X.

apple.com

© 2002 Apple Computer, Inc. All rights reserved.

Apple, the Apple logo, AirPort, Mac, and Sherlock are trademarks of Apple Computer, Inc., registered in the U.S. and other countries. iMovie, iPhoto, iPod, iTunes, SuperDrive, and .mac are trademarks of Apple Computer, Inc. Portions of Mac OS X utilize third-party copyrighted material. Acknowledgements, licensing terms, and disclaimers for such material are contained in the electronic documentation.

034-2156-A Printed in U.S.A.