



Santema, B. T. et al. (2019) Identifying optimal doses of heart failure medications in men compared with women: a prospective, observational, cohort study. *Lancet*, 394, 10205. (doi: [10.1016/S0140-6736\(19\)31792-1](https://doi.org/10.1016/S0140-6736(19)31792-1))

The material cannot be used for any other purpose without further permission of the publisher and is for private use only.

There may be differences between this version and the published version. You are advised to consult the publisher's version if you wish to cite from it.

<http://eprints.gla.ac.uk/193969/>

Deposited on 27 August 2019

Enlighten – Research publications by members of the University of
Glasgow

<http://eprints.gla.ac.uk>

1 **Identifying optimal doses of heart failure medications in men compared**
2 **with women: a prospective, observational cohort study**

3
4 Bernadet T. Santema, MD^a, Wouter Ouwerkerk, PhD^{b,c}, Jasper Tromp, MD/PhD^{a,b},
5 Izhiah E. Sama, PhD^a, Alice Ravera, MD^{a,d}, Prof. Vera Regitz-Zagrosek, MD/PhD^e,
6 Prof. Hans Hillege, MD/PhD^a, Prof. Nilesh J. Samani, FRCP^{f,g}, Prof. Faiez Zannad, MD/PhD^h,
7 Prof. Kenneth Dickstein, MD/PhD^{i,j}, Prof. Chim C. Lang, MD^k, Prof. John G. Cleland, MD^{l,m},
8 Jozine M. Ter Maaten, MD/PhD^a, Prof. Marco Metra, MD^d, Prof. Stefan D. Anker, MD/PhDⁿ,
9 Pim van der Harst, MD/PhD^l, Prof. Leong L. Ng, MD^{f,g}, Prof. Peter van der Meer, MD/PhD^a,
10 Prof. Dirk J. van Veldhuisen, MD/PhD^a, Sven Meyer, MD/PhD^o,
11 Prof. Carolyn S.P. Lam, MD/PhD^{*a,b}, Prof. Adriaan A. Voors, MD/PhD^a

12
13 *on behalf of the ASIAN-HF investigators, Appendix S1

14 Total word count: 3685

15 Abstract word count: 301

16 a. Department of Cardiology, University of Groningen, Hanzeplein 1, 9713 GZ, Groningen, the Netherlands

17 b. National Heart Centre Singapore, Hospital Drive, Singapore 169659

18 c. Dept of Dermatology, Amsterdam UMC, University of Amsterdam, Amsterdam Infection & Immunity Institute,
19 Amsterdam, The Netherlands

20 d. Institute of Cardiology, Department of Medical and Surgical Specialties, Radiological Sciences and Public Health,
21 University of Brescia, Piazza del Mercato, 15, 25121 Brescia, Italy

22 e. Charité - Universitaetsmedizin Berlin, Institute for Gender in Medicine, CCR, DZHK, partner site Berlin, Hessische Str 3-
23 4, 10115, Berlin, Germany

24 f. Department of Cardiovascular Sciences, University of Leicester, Groby Road, Leicester, LE3 9QP, UK

25 g. NIHR Leicester Biomedical Research Centre, Glenfield Hospital, Groby Road Leicester, LE3 9QP, UK

26 h. INSERM, Centre d'Investigations Cliniques Plurithématique 1433, INSERM U1116, Université de Lorraine, CHRU de
27 Nancy, F-CRIN INI-CRCT, Nancy, France

28 i. University of Bergen, 5007 Bergen, Norway

29 j. Stavanger University Hospital, Gerd-Ragna Bloch Thorsens Gate 8, 4011 Stavanger, Norway

30 k. School of Medicine Centre for Cardiovascular and Lung Biology, Division of Molecular and Clinical Medicine, University
31 of Dundee, Ninewells Hospital & Medical School, Dundee, DD1 9SY, UK

32 l. National Heart & Lung Institute, Royal Brompton & Harefield Hospitals, Imperial College, Sydney St, Chelsea, London
33 SW3 6NP, UK

34 m. Robertson Institute of Biostatistics and Clinical Trials Unit, University of Glasgow, University Avenue, Glasgow G12
35 8QQ, UK

36 n. Department of Cardiology (CVK); and Berlin Institute of Health Center for Regenerative Therapies (BCRT); German
37 Centre for Cardiovascular Research (DZHK) partner site Berlin; Charité Universitätsmedizin Berlin, Germany

38 o. Heart Center Oldenburg. Department of Cardiology. European Medical School Oldenburg-Groningen. Carl von Ossietzky
39 University Oldenburg. Oldenburg. Germany.

40 **Address for correspondence:**

41 Prof. Dr. A.A. Voors

42 Department of Cardiology

43 University Medical Center Groningen

44 Hanzeplein 1, 9713 GZ, Groningen, The Netherlands

45 Tel: +31 (0)50 3612355

46 Fax: +31 (0)50 3618062

47 E-mail: a.a.voors@umcg.nl

48

49 **Abstract**

50 **Background:** Guideline-recommended doses of angiotensin-converting-enzyme (ACE)
51 inhibitors/angiotensin-receptor blockers (ARBs) and beta-blockers are similar for men and women
52 with heart failure with reduced ejection fraction (HFrEF), even though there are known sex differences
53 in pharmacokinetics of these drugs. We hypothesized that there may be sex differences in the optimal
54 dose of ACE-inhibitors/ARBs and beta-blockers in patients with HFrEF.

55 **Methods:** We performed a *post-hoc*-analysis of BIOSTAT-CHF, a prospective study of HF patients in
56 whom initiation and up-titration of ACE-inhibitors/ARBs and beta-blockers was encouraged by
57 protocol. Findings were validated in an independent cohort (ASIAN-HF) of 3,539 men and 961
58 women with HFrEF.

59 **Findings:** Among 1,308 men and 402 women with HFrEF from BIOSTAT-CHF, women were older
60 (74 vs. 70 years, $p<0.001$), and had lower body weight (72 vs. 85 kg, $p<0.001$) and height (162 vs.
61 174 cm, $p<0.001$) than men, although body mass index did not differ significantly. A similar % of
62 men and women reached guideline-recommended target doses of ACE-inhibitors/ARBs (25 vs. 23%;
63 $p=0.61$) and beta-blockers (14 vs. 13%; $p=0.54$). In men, the lowest hazards of death and/or HF-
64 hospitalization occurred at 100% of the recommended dose of ACE-inhibitors/ARBs and beta-
65 blockers, but women showed a ~30% lower risk at only 50% of the recommended doses, with no
66 further decrease in risk at higher dose levels. These sex differences were still present after adjusting
67 for clinical covariates including age and body surface area. In the ASIAN-HF registry, similar patterns
68 were observed for both ACE-inhibitors/ARBs and beta-blockers, with women having a ~30% lower
69 risk at 50% of the recommended doses, with no further benefit at higher dose levels.

70 **Interpretation:** This study suggests that women with HFrEF may need lower doses of ACE-
71 inhibitors/ARBs and beta-blockers as compared with men, and brings into question what true ‘optimal
72 medical therapy’ is for women versus men.

73 **Funding:** European Commission [FP7-242209-BIOSTAT-CHF].

74 **Keywords:** Heart failure – Sex differences – Women – Uptitration – ACE-inhibitor – Beta-blocker

75 **Research in context**

76 **Evidence before this study**

77 We searched PubMed from Jan 1, 1980, to Jan 31, 2019. with the search terms “heart failure”, “sex
78 differences”, “gender differences”, “women”, “men”, “outcome”, “mortality”, “hospitalization”,
79 “drugs”, “medication”, “dose”, “angiotensin-converting enzyme inhibitors”, “angiotensin-receptor
80 blockers”, and “beta-blockers”. There were no studies that directly compared the optimal dose levels
81 of current evidence-based drugs on a continuous scale, in relation to clinical outcome of men and
82 women with heart failure with reduced ejection fraction separately.

83 **Added value of this study**

84 To our knowledge, this is the first study to show that there are striking sex differences in the optimal
85 dose levels of angiotensin-converting-enzyme inhibitors/angiotensin-receptor blockers and beta-
86 blockers in patients with heart failure with reduced ejection fraction, where women had the lowest risk
87 of death and/or heart failure hospitalization at half the guideline-recommended doses as compared
88 with men.

89 **Implications of all available evidence**

90 Due to the under-representation of women with heart failure with reduced ejection fraction in all
91 previous clinical drug trials, and in the absence of prospective sex-specific dose-finding clinical trials
92 of current therapies, this is the best available evidence with regards to the optimal dose levels of heart
93 failure medication in men and women separately. These findings should also prompt similar studies in
94 other cardiovascular disease areas.

95 **Introduction**

96 Angiotensin-converting-enzyme (ACE) inhibitors, angiotensin-receptor blockers (ARBs) and beta-
97 blockers are the cornerstone of therapy for patients with heart failure with reduced ejection fraction
98 (HFrEF).¹ Current HF guidelines recommend up-titration of ACE-inhibitors/ARBs and beta-blockers
99 to the same target doses in men and women (*Table 1*). These sex-neutral target doses were
100 recommended despite findings from several pharmacological studies indicating that with the same
101 dose, the maximum plasma concentrations of ACE-inhibitors, ARBs and beta-blockers were up to 2.5
102 times higher in women as compared to men.²⁻⁴ Women generally have lower body weights, a higher
103 proportion of body fat, and a lower plasma volume. This may contribute to a longer duration of action
104 of lipophilic drugs, and higher peak plasma concentrations of hydrophilic drugs in women.^{4,5}
105 Moreover, lower cardiac output in women results in lower hepatic flow and lower glomerular filtration
106 rate, and women have lower expression of some drug-specific CYP-isoenzymes, which could also
107 contribute to higher plasma levels of both hydrophilic and lipophilic drugs in women.^{6,7} Supporting
108 these considerations, studies with beta-blockers showed different pharmacodynamic effects with a
109 greater reduction in heart rate and blood pressure in women compared to men using similar doses.^{8,9} In
110 addition, women have a 50-70% greater risk in experiencing adverse drug reactions compared to men,
111 and these adverse events are generally more serious in women.^{4,5,9}

112 We tested this hypothesis in the prospective multinational European chronic HF cohort of the BIOlogy
113 Study to Tailored Treatment in Chronic Heart Failure (BIOSAT-CHF), and validated our findings in
114 the independent multinational chronic HF cohort of Asian Sudden Cardiac Death in Heart Failure
115 (ASIAN-HF).

116 **Methods**

117 *Patient population and study design*

118 The design and primary results of BIOSTAT-CHF have been previously published.^{10,11} Briefly,
119 BIOSTAT-CHF was a multinational, prospective, observational study to evaluate which patients will
120 have a poor clinical outcome despite evidence-based heart failure treatment, in which we have
121 performed a post-hoc analysis. A total of 2,516 patients were included who were on suboptimal HF
122 therapy (not receiving, or receiving $\leq 50\%$ of target dose of ACE-inhibitors/ARBs and/or beta-
123 blockers) between 2010-2012. Treating physicians were encouraged to initiate and/or up-titrate these
124 drugs during the first three months after inclusion; the optimization phase. Target doses of the
125 individual drugs are summarized in *Supplementary Table 1*.¹ The subsequent six months were
126 considered as the maintenance phase. At nine months, a second study visit was performed in which the
127 use of heart failure medication doses at three and nine months was recorded again. The fraction of the
128 target dose that was achieved after the up-titration period at three months was presented as a
129 percentage ranging from 0 to $\geq 100\%$, and further categorized into four groups: 0, 1-49, 50-99% or
130 $\geq 100\%$ of recommended target dose. We attempted to record the treating physicians' reason for not
131 up-titrating patients to target doses (*Supplementary Material*). Since the European Society of
132 Cardiology guidelines of 2008 only recommended the use of MRA in patients who have been in New
133 York Heart Association (NYHA) class IV in the past 6 months (level of evidence B), no specific MRA
134 up-titration strategy was used in BIOSTAT-CHF. In our analyses, only patients with a left ventricular
135 ejection fraction (LVEF) $< 40\%$ were included, in accordance with current guideline-recommended
136 therapies (n=1,819).¹ Patients who died within the first three months (the up-titration phase) were
137 excluded (n=109). A flow diagram is displayed in *Supplementary Figure 1*. Baseline characteristics of
138 the patients that were included and excluded for our study is presented in *Supplementary Table 2*.
139 Renal disease was defined as an estimated glomerular filtration rate below 60 mL/min/1.73m².
140 Primary outcome was a composite of time to all-cause mortality or HF hospitalization. After the
141 second study visit at nine months, patients were followed either by standard clinic follow-up, or
142 telephone contact every six months until the end of study. The protocol of BIOSTAT-CHF used clear

143 endpoint definitions, a structured case report form, and source data of all sites were closely monitored.
144 The median follow-up duration for the primary endpoint was 21 months (first and third quartile [Q1-
145 Q3] of 15-27 months).

146 The results of this study were validated in ASIAN-HF, a prospective observational study of 5,276
147 patients with symptomatic HF and LVEF \leq 40% from 11 Asian regions, in which maximally tolerated
148 doses of HF medications were closely recorded and patients were followed up for outcomes
149 (independently adjudicated).¹² Target doses of beta-blockers and ACE-inhibitors/ARBs were defined
150 using the same international standards as for BIOSTAT-CHF. Patients with missing outcome date
151 (n=582) or incomplete data about the dose level of HF medication (n=194) were excluded. Baseline
152 characteristics of patients that were included and excluded from ASIAN-HF for our study is presented
153 in *Supplementary Table 3*.

154 Both BIOSTAT-CHF and ASIAN-HF comply with the Declaration of Helsinki, and medical ethics
155 committee of participating centers approved the study. All patients provided written informed consent.

156 *Statistical analyses*

157 Normally distributed continuous variables were reported as means \pm standard deviation and non-
158 normally distributed variables as median (Q1-Q3). Categorical variables were presented as numbers
159 with percentages. Student's t-tests, Chi-square tests and Mann-Whitney U tests were used for group
160 comparisons. Cox proportional hazard models were used to calculate hazard ratios (HR), adjusted for
161 the effect of potential confounders, with patients using \geq 100% of the recommended dose as the
162 reference category. The multivariable risk model of BIOSTAT-CHF for the composite endpoint (death
163 and/or HF hospitalization) was used, which contains age, previous HF hospitalization, systolic blood
164 pressure, presence of peripheral edema, N-terminal pro-brain natriuretic peptide (NT-proBNP),
165 hemoglobin, sodium, high-density lipoprotein, and the use of beta-blockers at baseline.¹³ In a separate
166 multivariable model, outcome was adjusted for body surface area (BSA) using the formula of Du Bois
167 & Du Bois.¹⁴ Since the range of 1-49% and 50-99% of recommended dose in the Cox regression
168 models is quite broad, but chosen to keep a sufficient number of patients within all four dose
169 categories, a density plot of the patients using specific dose levels in BIOSTAT-CHF (in blue) and

170 ASIAN-HF (in red) is displayed as *Supplementary Figure 2*, showing that the large majority of
171 patients in the 50-99% dose category actually uses 50% of recommended dose.

172 Because BIOSTAT-CHF and ASIAN-HF are not randomized controlled trials, we adjusted for
173 treatment indication bias.¹⁵ All analyses of the effect of up-titration on mortality and/or HF
174 hospitalization risk were inversely weighted with the probability of the given treatment.¹⁶ The given
175 treatment is defined as successful up-titration to $\geq 50\%$ of European Society of Cardiology–
176 recommended doses for ACE-inhibitor/ARBs or beta-blockers or not.¹¹ The probability of given
177 treatment for a specific patient was modelled using a penalized (LASSO) logistic regression model.¹⁷
178 All available covariates were considered as predictor variables for successful up-titration. We
179 averaged the probabilities over five imputation sets. The weights were calculated by the inverse of the
180 probability for those who were successfully treated, or the $(1-\text{probability})^{-1}$ for those who were not.
181 In order to compare the non-linear risk of the composite endpoint between men and women along the
182 continuum of fractions of target doses, smoothing natural cubic splines were used. We modelled the
183 composite endpoint in men and women using Cox proportional hazard models with dosages on a
184 continuous scale using natural regression splines added to the sex effects and their interaction. The
185 optimal degrees of freedom were determined based on the Bayesian information criterion defined
186 as: $\text{BIC} = -2 * \log(\text{Likelihood}) + \text{number of parameters} * \log(n)$, which put a penalty on the number of
187 parameters.¹⁸ The lines in *Figure 1 and 2* are based on the Cox regression models in men and women
188 on that specific dose level, compared to the hazard of the total population (men and women combined)
189 on the median dose.

190 Further exploratory analysis was performed using subpopulation treatment effect pattern plots
191 (STEPP). STEPP is a robust method for exploring differences in treatment effect between two
192 subgroups (in this study men versus women), and was performed to validate the findings from the
193 cubic splines. STEPP divides the group of men and women into smaller subgroups who use different
194 % of target dose (on the x-axis), and compares every subgroup with overlap of around 100 patients to
195 the next subgroup, until every patient has been included in at least one of the subgroups.^{19,20} This
196 approach with overlapping subgroups increases the precision of the estimated treatment effect. The
197 figures display both the individual treatment effect in men and women, combined with a plot below,

198 showing the ratio of the Relative Risk of women divided by the Relative Risk in men, resulting in a
199 Hazard Ratio for women compared with men, including confidence intervals of this ratio. A two-tailed
200 p-value of <0.05 was considered statistically significant. Statistical analyses were conducted using R,
201 A Language and Environment for Statistical Computing, version 3.4.1 (R Foundation for Statistical
202 Computing, Vienna, Austria).

203 *Role of the funding source*

204 This study was supported by a grant from the European Committee. However, they had no role in the
205 study design; in the collection, analysis, and interpretation of data; in writing of the report; and in the
206 decision to submit the paper for publication. The corresponding author had full access to all the data in
207 the study and had final responsibility for the decision to submit for publication.

208 **Results**

209 *Clinical characteristics*

210 A total of 1,710 patients from BIOSSTAT-CHF were studied, of whom 402 (24%) were women.
211 Baseline characteristics of men and women are presented in *Table 2*. At baseline, women were older
212 (74 versus 70 years, $p<0.001$), had lower body weight (72 versus 85 kg, $p<0.001$) and height (162
213 versus 174 cm, $p<0.001$), although BMI did not differ significantly (27.3 versus 27.9, $p=0.06$).
214 Women less often had a history of smoking (28% versus 65%, $p<0.001$) and less coronary artery
215 disease (35% versus 48%, $p<0.001$), atrial fibrillation (35% versus 44%, $p=0.002$), and renal disease
216 (19% versus 25%, $p=0.02$) as compared with men. Women reported lower quality of life than men
217 (median overall score of 44 versus 54 in men, $p<0.001$), despite similar levels of NT-proBNP (2,724
218 versus 2,484 pg/mL in men, $p=0.18$). The use of MRA was higher in men than in women, both at
219 baseline (59% versus 48% in women, $p<0.001$), and at follow-up (55% versus 47% in women,
220 $p=0.006$).

221 *Up-titration of medication*

222 At baseline, there were no significant differences in the use of ACE-inhibitors/ARBs between the
223 sexes, with similarly small proportions already at target doses at baseline (*Table 2*). Beta-blockers
224 were more frequently used at baseline than ACE-inhibitors/ARBs, and more often in men than in

225 women, with similarly small proportions already at target dose at baseline. The proportion of men and
226 women who reached the recommended target dose after the first three months of the study was also
227 similar. At the follow-up visit at 9 months, blood pressure and heart rate were similar between men
228 and women (*Supplementary Table 4*). An overview of the most frequently prescribed individual HF
229 drugs in men and women is presented in *Supplementary Table 5*.

230 With regards to men, the univariable Cox regression model showed the highest risk of death and/or HF
231 hospitalization when they did not receive any dose of ACE-inhibitor/ARBs or beta-blockers, a lower
232 risk when they reached 1-49% or 50-99% of target dose, and lowest risk when they reached $\geq 100\%$ of
233 target dose (reference category) (*Table 3*). In multivariable analysis, men did not have a survival
234 benefit when they used lower doses as compared to those on target dose. With regards to women,
235 those treated with 50-99% of the recommended target dose had the lowest risk of death and/or HF
236 hospitalization, even compared to those at 100% of the target dose for both ACE-inhibitor/ARBs and
237 beta-blockers, also after multivariable adjustment (*Table 3*).

238 *Cubic splines and STEPP analyses*

239 *Figure 1* shows sex-stratified splines according to dose of beta-blockers and ACE-inhibitors/ARBs,
240 ranging from 1-100%, using the population mean as the reference. For beta-blockers, there was a U-
241 shaped risk curve among women, with an optimal dose level for women around 60% of recommended
242 target dose (*Figure 1A*). For men using beta-blockers, a lower risk was observed around both 30% and
243 100% of target dose. For ACE-inhibitors/ARBs, women had the lowest risk of the composite endpoint
244 at around 40% of recommended target dose and no further decrease in risk at higher dose levels,
245 whereas men had the lowest risk at 100% of recommended target dose ($p < 0.001$, *Figure 1B*).

246 The STEPP analysis with the fraction of target dose per drug on a continuous scale revealed similar
247 results compared to the Cox regression models and the splines, with men having a lower risk with
248 increasing dose levels of ACE-inhibitors/ARBs and beta-blockers, whereas women had the lowest risk
249 of death and/or HF hospitalization when they used 50% of target dose of ACE-inhibitors/ARBs and
250 (*Supplementary Figure 3*). Both sexes had the highest risk of the composite endpoint when they used
251 no ACE-inhibitors/ARBs or beta-blockers at all.

252 *Validation analysis*

253 Of the 4,500 patients studied from ASIAN-HF, 961 (21%) were women. Both men and women in the
254 validation cohort were younger, and had lower body weight and height compared to the European
255 cohort (*Supplementary Table 6*). The cubic spline for Asian women using doses of beta-blockers
256 showed a steep decline in risk of the composite endpoint around 40-50% of recommended dose, with
257 no further decrease in risk at higher dose levels, whereas the risk in Asian men was lowest when using
258 100% of recommended target dose of beta-blockers ($p < 0.001$, *Figure 2A*). The spline of Asian women
259 using doses of ACE-inhibitors/ARBs showed a decrease in risk for the composite endpoint around
260 60% of recommended target dose, and no further protective effect at doses higher than 60% (*Figure*
261 *2B*). Asian men did only seem to benefit from ACE-inhibitors/ARBS when using more than 50% of
262 the recommended dose, and on the whole scale of dose levels, men had a significantly higher risk of
263 the composite endpoint as compared with women ($P < 0.001$).

264 **Discussion**

265 Drug therapies are of great importance to patients with HFrEF, and uptitration of these drugs to
266 maximal doses is recommended in current HF guidelines (*Table 1*). The main finding of the present
267 study suggests, however, that these doses may not be appropriate in women. Our multinational
268 observational study showed sex differences in the optimal dose of ACE-inhibitors/ARBs and beta-
269 blockers in patients with HFrEF, where women had the lowest risk of adverse outcomes at lower doses
270 (half the guideline-recommended doses) as compared to men, with no further decrease in risk at higher
271 dose levels.

272 These findings were found in BIOSTAT-CHF, in which patients were included from 11 European
273 countries, and were validated in an independent HF cohort in which patients were included from 11
274 Asian regions (ASIAN-HF). These two HF populations did not only differ in ethnic background, but
275 also differed importantly in other baseline characteristics, with patients from ASIAN-HF being
276 younger, and having a much lower body weight, height and BMI as compared to the European cohort.
277 Moreover, known differences in metabolism between Asian and European patients, such as ethnic
278 differences in the incidence of cytochrome P450 polymorphisms, could have resulted in different

279 findings in the optimal dose levels of patients included in ASIAN-HF as compared to those in the
280 European cohort.²¹ Despite differences in baseline characteristics and ethnicity, similar patterns in
281 optimal dose levels for men and women were observed in ASIAN-HF and BIOSTAT-CHF; thus
282 strengthening our hypothesis that there are intrinsic sex differences observed in different regions
283 worldwide.

284 Important sex differences in relation to the use of heart failure medication has been previously shown
285 by the Digitalis Investigation Group (DIG) trial. This randomized, placebo-controlled trial was first
286 published in 1997, showing less overall- and HF-related hospitalizations in patients using digoxin
287 (versus placebo) in patients with stable HF and LVEF<45%.²² Therefore, the use of digoxin was
288 recommended in both the United States and the European guidelines. However, a post-hoc subgroup
289 analysis showed a significantly higher absolute risk of death in women, and a non-significant
290 reduction in the risk of death among men ($p=0.014$ for interaction).²³ Even though men used slightly
291 higher doses of digoxin in this trial (0.0093 mg per unit of body-mass index versus 0.0084 mg in
292 women), higher serum digoxin levels were found in women one month after study entry (0.9 ng/mL
293 versus 0.8 ng/mL, $p=0.007$). Unfortunately, there was insufficient statistical power to test for an
294 interaction between sex, the use of digoxin, and sex differences in serum digoxin levels, since serum
295 levels of digoxin were only measured in a small subpopulation (less than one third) of the trial
296 participants.²³ There might still be favorable effects of lower doses of digoxin (and accompanying
297 lower serum digoxin levels) in patients with HFrEF using currently recommended therapies, which
298 will be further investigated in a randomized clinical trial.²⁴

299 The randomized trial HEAAL, in which high versus low-doses of losartan in HF were compared,
300 concluded that patients treated with the high dose level had the best clinical outcome.²⁵ However, a
301 sex-stratified subgroup analysis comparing high versus low dose showed a HR of 0.86 (0.77-0.96) for
302 men in favor of the higher dose of losartan, and no significant difference between the two dose levels
303 in women (HR 1.02, 95% CI 0.85-1.23), with a p-value for interaction of 0.10, even though this study
304 was not powered for subgroup analyses. Moreover, results from ATLAS comparing high and low dose
305 of lisinopril observed that men had significantly lower all-cause mortality using the higher dose levels

306 (32.5 to 35 mg daily), whereas in women a trend towards better survival in the lower dose (2.5 to 5.0
307 mg daily) was observed (p-value for interaction was not provided).²⁶

308 As described previously, there are several well-established pharmacokinetic sex differences that could
309 contribute to differences in optimal doses of HF medications for men and women. In our study,
310 women were older, and had a significantly lower body weight and height than men. A study in healthy
311 men and women observed that after administration of one dose of 100mg metoprolol, the area under
312 the concentration-time curve (AUC) was 417 mcg·h/L in men and 867 mcg·h/L in women. The large
313 difference in body weight (83.9 ± 10.7 kg in men and 62.0 ± 7.3 kg in women) and clearance rate
314 between men (253 L/h) and women (101 L/h) seemed to be important contributors to these observed
315 differences in AUC. Based on these findings, a dose reduction for metoprolol of 50% in women was
316 recommended by the authors, which is strikingly similar to the findings in the present study, even after
317 adjustment for BSA.²

318 Another hypothesis is that women are more sensitive, i.e. have a greater clinical response to drugs than
319 men, even if plasma concentrations were similar between the sexes.⁴ The effect of sex hormones on
320 specific drugs, but also how drugs effects are being experienced by men and women are still poorly
321 understood, and could potentially contribute to higher reporting rates of adverse events in women.²⁷

322 Sex differences with regards to other HF therapies are previously observed in different responses to
323 cardiac resynchronization therapy (CRT) between men and women, in which women had a better
324 response to CRT than men.²⁸ However, to our knowledge, no such analyses are available with respect
325 to medical treatment in HF.

326 It should be noted that previous results from the CHAMP-HF registry showed that women with HF_rEF
327 are often not treated with current guideline recommended therapies, in the absence of absolute
328 contraindications to these therapies.²⁹ Moreover, the TRED-HF trial showed that discontinuation of
329 HF_rEF therapies, even in patients with recovered LVEF, have deleterious effects.³⁰ We therefore
330 emphasize that the findings of the current study should not be misinterpreted as an excuse to
331 undertreat women with HF_rEF. Instead, we suggest that a one-size-fits-all approach may not be

332 optimal in the treatment of men and women with HFrEF, but that the dose levels of HF medication in
333 women should perhaps not be as high as in men.

334 *Limitations*

335 The present study is limited by its post-hoc design. We could not assess dose-related side effects of
336 drugs, despite attempting to record physicians' reasons for lack of up-titration. A greater frequency of
337 adverse drug reactions in women compared to men could impact the maximum tolerated dose and
338 warrants future study. We did not measure serum levels of HF medications, which could have
339 provided more insight into the underlying mechanisms of the present findings. The sample size of
340 women in BIOSSTAT-CHF and ASIAN-HF was relatively low as compared to the number of men,
341 which is very common in HFrEF studies. The number of patients reaching target doses of ACE-
342 inhibitors/ARBs and beta-blockers is not comparable to the numbers of patients reaching target doses
343 in randomized clinical trials, since our study reflects real-world up-titration instead of trial protocol
344 targets. We have performed the analyses for ACE-inhibitors/ARBs and beta-blockers, and did not
345 further differentiate between all individual drugs within these drug categories, even though the
346 pharmacokinetic and pharmacodynamic characteristics of the individual drugs within these categories
347 could differ. Even though we have adjusted for multiple potential confounders in our multivariable
348 regression models, we cannot exclude the possibility that our findings could be influenced by other
349 previously described sex differences in baseline characteristics, such as the higher use of MRA in
350 men, or unknown confounding factors. The observation of the lower risk in men that used only ~30%
351 of recommended beta-blocker dose, as was observed in the spline (*Figure 1*) and Cox regression
352 models (*Table 3*), is not fully understood and might be caused by overfitting of the model. This
353 observation was neither found in the STEPP analysis, nor in the validation cohort of ASIAN-HF.

354 To our knowledge, this is the first study to describe sex-specific outcome in relation to the prescribed
355 dose levels of HF medications. These findings may have important implications for sex-specific target
356 doses in HF, and should be validated in dose-finding sex-stratified prospective studies. It is, however,
357 unlikely that these sex-specific dose-finding trials of current HFrEF therapies will be performed. This

358 study also underlines the importance of performing pre-specified sex-specific analyses in all drug
359 trials.

360 **Conclusion**

361 The present study provides evidence supporting the hypothesis that women with HFREF may have the
362 best outcomes with lower doses of ACE-inhibitors/ARBs and beta-blockers as compared with men,
363 and lower doses than recommended in international HF guidelines. This study brings into question
364 what true ‘optimal medical therapy’ is for women versus men with HFREF.

365 **Contributors:**

366 HH, NJS, FZ, KD, CCL, JGC, JMTM, MM, SDA, PVDH, LLN, PVDM, DJVV, CSPL, and AAV
367 were involved in the conception, design, and planning of the research, acquired the data, critically
368 reviewed the manuscript. All others interpreted the results. AAV, CSPL and DJVV handled funding
369 and supervision. AR, JT, VRZ, and SM critically reviewed the manuscript. BTS, WO, and IES
370 performed statistical analyses, wrote and revised the manuscript. The manuscript was approved for
371 submission and publication by all authors.

372 **Declaration of interests:**

373 Dr. Anker reports grants and personal fees from Vifor Int, personal fees from Bayer, personal fees
374 from Boehringer Ingelheim, personal fees from Novartis, personal fees from Servier, grants from
375 Abbott Vascular, personal fees from Respicardia, personal fees from Impulse Dynamics, outside the
376 submitted work. Dr. Regitz-Zagrosek reports grants from DZHK (German Ministry of Research),
377 during the conduct of the study; personal fees from Berlin Chemie, personal fees from Pfizer, outside
378 the submitted work. Dr. Ng reports grants from European Union FP7 programme, grants from John &
379 Lucille Van Geest foundation, during the conduct of the study. Dr. Metra reports grants from
380 European Community (EC), during the conduct of the study; personal fees from Bayer, Novartis and
381 Servier, outside the submitted work. Dr. Voors reports grants from European Commission , during the
382 conduct of the study; personal fees from Amgen, personal fees from Boehringer Ingelheim, personal
383 fees from AstraZeneca, personal fees from Bayer, personal fees from Cytokinetics, personal fees from

384 GSK, personal fees from Myokardia, grants and personal fees from Roche diagnostics, personal fees
385 from novartis, personal fees from Servier, outside the submitted work. Dr. Lam reports grants from
386 National Medical Research Council of Singapore, grants and personal fees from Boston Scientific,
387 grants and personal fees from Bayer, grants and personal fees from Roche Diagnostic, grants from
388 Medtronic, grants and personal fees from Vifor Pharma, personal fees from Astra Zeneca, personal
389 fees from Novartis, personal fees from Amgen, personal fees from Merck, personal fees from Janssen
390 Research & Development LLC, personal fees from Menarini, personal fees from Boehringer
391 Ingelheim, personal fees from Abbott Diagnostics, personal fees from Corvia, personal fees from
392 Stealth BioTherapeutics, outside the submitted work; In addition, Dr. Lam has a patent PCT/
393 SG2016/050217 pending. Dr. Cleland reports grants and personal fees from Amgen, personal fees
394 from AstraZeneca, grants and personal fees from Bayer, grants and personal fees from Bristol Myers
395 Squibb, personal fees from GSK, grants, personal fees and non-financial support from Medtronic ,
396 personal fees from Myokardia, grants, personal fees and non-financial support from Novartis, grants
397 and personal fees from Philips, grants and non-financial support from Pharmacosmos, grants and non-
398 financial support from PharmaNord, personal fees from Sanofi, personal fees from Servier, grants and
399 personal fees from Stealth Biopharmaceuticals , grants and personal fees from Torrent
400 Pharmaceuticals, grants, personal fees and non-financial support from Vifor, personal fees from
401 Abbott, outside the submitted work. Dr. Lang reports grants and other from Astra Zeneca, grants from
402 Amgen, other from MSD, grants from Novartis, other from servier, during the conduct of the study.
403 All other authors have nothing to disclose.

404 **References**

- 405 1. Ponikowski P, Voors AA, Anker SD, et al. 2016 ESC Guidelines for the diagnosis and treatment
406 of acute and chronic heart failure: The Task Force for the diagnosis and treatment of acute and chronic
407 heart failure of the European Society of Cardiology (ESC). Developed with the special contribution of
408 the Heart Failure Association (HFA) of the ESC. *Eur J Heart Fail* 2016; **18**(8): 891-975.
409 doi:10.1002/ejhf.592 [doi].
- 410 2. Eugene AR. Metoprolol Dose Equivalence in Adult Men and Women Based on Gender
411 Differences: Pharmacokinetic Modeling and Simulations. *Med Sci (Basel)* 2016; **4**(4):
412 10.3390/medsci4040018. Epub 2016 Nov 15. doi:18 [pii].
- 413 3. Eugene AR. Gender based Dosing of Metoprolol in the Elderly using Population
414 Pharmacokinetic Modeling and Simulations. *Int J Clin Pharmacol Toxicol* 2016; **5**(3): 209-15.
- 415 4. Soldin OP, Mattison DR. Sex differences in pharmacokinetics and pharmacodynamics. *Clin*
416 *Pharmacokinet* 2009; **48**(3): 143-57. doi:10.2165/00003088-200948030-00001 [doi].
- 417 5. Whitley H, Lindsey W. Sex-based differences in drug activity. *Am Fam Physician* 2009; **80**(11):
418 1254-8.
- 419 6. Regitz-Zagrosek V. Therapeutic implications of the gender-specific aspects of cardiovascular
420 disease. *Nat Rev Drug Discov* 2006; **5**(5): 425-38. doi:nrd2032 [pii].
- 421 7. Rosano GM, Lewis B, Agewall S, et al. Gender differences in the effect of cardiovascular drugs:
422 a position document of the Working Group on Pharmacology and Drug Therapy of the ESC. *Eur*
423 *Heart J* 2015; **36**(40): 2677-80. doi:10.1093/eurheartj/ehv161 [doi].
- 424 8. Luzier AB, Killian A, Wilton JH, Wilson MF, Forrest A, Kazierad DJ. Gender-related effects on
425 metoprolol pharmacokinetics and pharmacodynamics in healthy volunteers. *Clin Pharmacol Ther*
426 1999; **66**(6): 594-601. doi:S0009-9236(99)00176-9 [pii].

- 449 18. Hastie, T.J. Generalized additive models. Chapter 7 of *Statistical Models in S*. 1st ed. Boca
450 Raton: Routledge Ltd; 1992.
- 451 19. Bonetti M, Gelber RD. A graphical method to assess treatment-covariate interactions using the
452 Cox model on subsets of the data. *Stat Med* 2000; **19**(19): 2595-609. doi:10.1002/1097-
453 0258(20001015)19:193.0.CO;2-M [pii].
- 454 20. Bonetti M, Gelber RD. Patterns of treatment effects in subsets of patients in clinical trials.
455 *Biostatistics* 2004; **5**(3): 465-81. doi:10.1093/biostatistics/5.3.465 [doi].
- 456 21. Mizutani T. PM frequencies of major CYPs in Asians and Caucasians. *Drug Metab Rev* 2003;
457 **35**(2-3): 99-106. doi:10.1081/DMR-120023681 [doi].
- 458 22. Digitalis Investigation Group. The effect of digoxin on mortality and morbidity in patients with
459 heart failure. *N Engl J Med* 1997; **336**(8): 525-33. doi:10.1056/NEJM199702203360801 [doi].
- 460 23. Rathore SS, Wang Y, Krumholz HM. Sex-based differences in the effect of digoxin for the
461 treatment of heart failure. *N Engl J Med* 2002; **347**(18): 1403-11. doi:10.1056/NEJMoa021266 [doi].
- 462 24. van Veldhuisen DJ, Rienstra M, van der Meer P. Value of digoxin in patients with heart failure:
463 new pieces to the puzzle. *Eur J Heart Fail* 2018; **20**(7): 1146-7. doi:10.1002/ejhf.1200 [doi].
- 464 25. Konstam MA, Neaton JD, Dickstein K, et al. Effects of high-dose versus low-dose losartan on
465 clinical outcomes in patients with heart failure (HEAAL study): a randomised, double-blind trial.
466 *Lancet* 2009; **374**(9704): 1840-8. doi:10.1016/S0140-6736(09)61913-9 [doi].
- 467 26. Packer M, Poole-Wilson PA, Armstrong PW, et al. Comparative effects of low and high doses
468 of the angiotensin-converting enzyme inhibitor, lisinopril, on morbidity and mortality in chronic heart
469 failure. ATLAS Study Group. *Circulation* 1999; **100**(23): 2312-8.

- 470 27. EUGenMed Cardiovascular Clinical Study Group, Regitz-Zagrosek V, Oertelt-Prigione S, et al.
471 Gender in cardiovascular diseases: impact on clinical manifestations, management, and outcomes. *Eur*
472 *Heart J* 2016; **37**(1): 24-34. doi:10.1093/eurheartj/ehv598 [doi].
- 473 28. Linde C, Cleland JGF, Gold MR, et al. The interaction of sex, height, and QRS duration on the
474 effects of cardiac resynchronization therapy on morbidity and mortality: an individual-patient data
475 meta-analysis. *Eur J Heart Fail* 2018; **20**(4): 780-91. doi:10.1002/ejhf.1133 [doi].
- 476 29. Greene SJ, Butler J, Albert NM, et al. Medical Therapy for Heart Failure With Reduced
477 Ejection Fraction: The CHAMP-HF Registry. *J Am Coll Cardiol* 2018; **72**(4): 351-66. doi:S0735-
478 1097(18)34906-4 [pii].
- 479 30. Halliday BP, Wassall R, Lota AS, et al. Withdrawal of pharmacological treatment for heart
480 failure in patients with recovered dilated cardiomyopathy (TRED-HF): an open-label, pilot,
481 randomised trial. *Lancet* 2019; **393**(10166): 61-73. doi:S0140-6736(18)32484-X [pii].

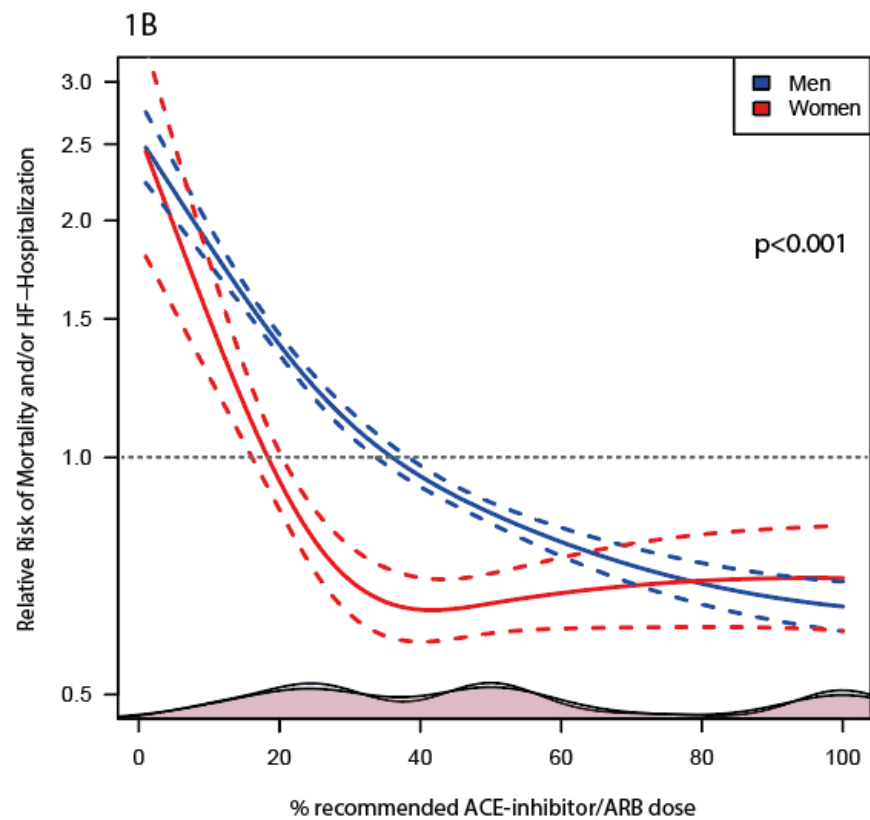
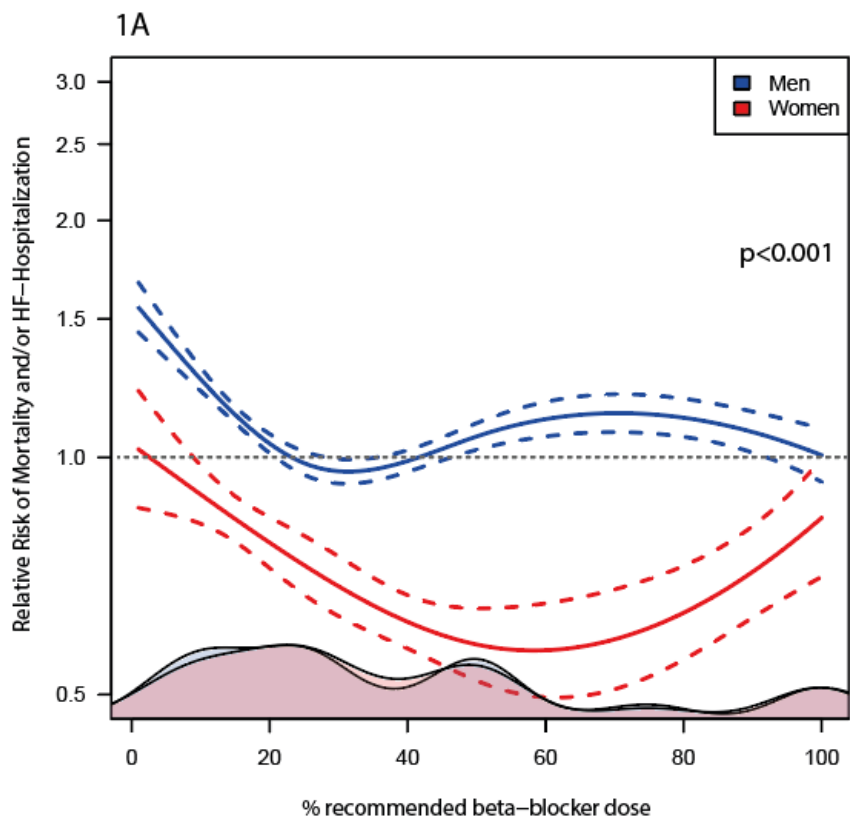
482

483 **Figure Legend**

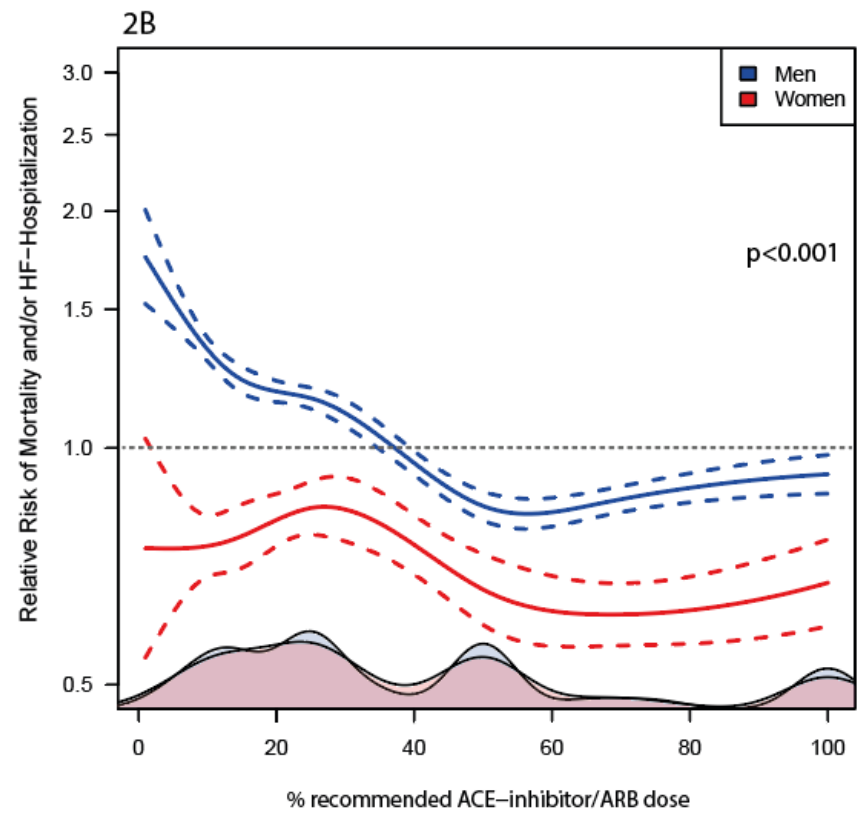
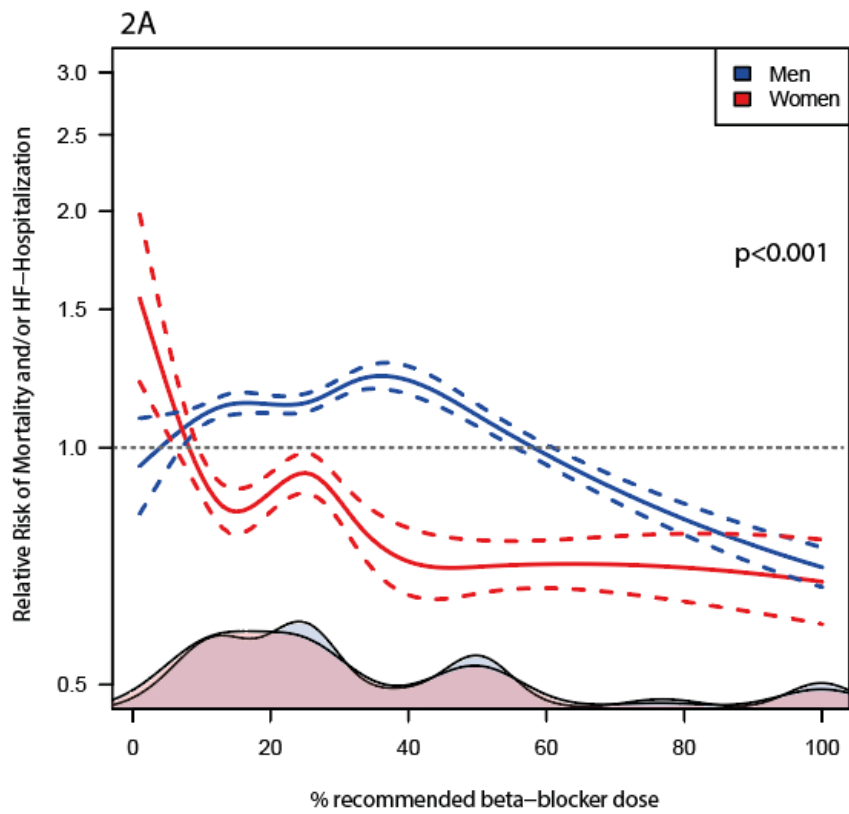
484 **Figure 1.** Natural cubic splines showing the optimal beta-blocker (1A) and ACE-inhibitor/ARB dose
485 (1B) ranging from 1-100% of recommended target dose in men and women (BIOSTAT-CHF) for the
486 composite endpoint all-cause mortality and/or HF hospitalization, compared to the hazard of the total
487 population (men and women combined) on the median dose. Median follow-up duration was 21
488 months (IQR 15-27 months). The smoothed areas at the bottom of both figures represent the density
489 of men (blue) and women (red) taking that specific dose level. The p-value represents the interaction
490 of sex and treatment in the Cox regression model. ACE=angiotensin converting enzyme inhibitor,
491 ARB=angiotensin receptor blocker, HF=heart failure.

492 **Figure 2.** Validation of optimal beta-blocker (2A) and ACE-inhibitor/ARB dose (2B) ranging from 1-
493 100% of recommended target dose in men and women in ASIAN-HF, for the composite endpoint all-
494 cause mortality or HF hospitalization, compared to the hazard of the total population (men and women
495 combined) on the median dose. Median follow-up duration was 14 months (IQR 7-25 months). The
496 smoothed areas at the bottom of both figures represent the density of men (blue) and women (red)
497 taking that specific dose level. The p-value represents the interaction of sex and treatment in the Cox
498 regression model. ACE=angiotensin converting enzyme inhibitor, ARB=angiotensin receptor blocker,
499 HF=heart failure.

500



501



502

503

504 **Table 1.** Overview of sex-specific details of drug trials on which the international heart failure guidelines are based.

Drug class	Study	Published (year)	Countries	Drug	Target dose	Actual mean dose used	Eligibility criteria	LVEF	Baseline characteristics	Background medication	% women	No. of women	Primary endpoint	Sex-specific outcome
ACE-i	CONSENSUS	1987	Finland, Norway, and Sweden	Enalapril	20mg b.i.d.	9mg b.i.d. 28% on target dose	NYHA IV only,	≤35%	Mean age 71 years, 73% ischaemic heart disease, 50% AF	98% diuretic 93% digoxin 3% b-blocker 55% vasodilator	30	74	Mortality	Significant benefit in men, not in women
	SOLVD-Treatment	1991	U.S.A., Canada, and Belgium	Enalapril	10mg b.i.d.	8-4mg b.i.d. 49% on target dose	<80 years, NYHA I-IV	≤35%	Mean age 61 years, mean LVEF 25%, 71% ischaemic heart disease	85% diuretic 67% digoxin 8% b-blocker 51% vasodilators	20	505	Mortality	Significant benefit in men, trend towards benefit in women
ARB	Val-HeFT	2001	16 countries: U.S.A., Australia, Europe, South Africa	Valsartan	160mg b.i.d.	127 b.i.d. 84% on target dose	NYHA II-IV, Stable, chronic HF	<40%	Mean age 63 years, 57% ischaemic heart disease	93% ACE-i 86% diuretic 67% digoxin 35% b-blocker	20	1,003	Mortality or HF hospitalisation/ ED presentation	Significant benefit in men, trend towards benefit in women
	CHARM-Added	2003	26 countries U.S.A./Europe	Candesartan	32mg q.d.	24mg q.d. 61% on target dose	NYHA II-IV	≤40%	Mean age 64 years, 62% ischaemic heart disease, 77% previous HF hospitalisation	100% ACE-i 90% diuretic 58% digoxin 55% b-blocker 37% vasodilators	21	542	Cardiovascular death or HF hospitalisation	CHARM low-LVEF trials combined: No sex difference in primary endpoint, p for interaction 0.95
	CHARM-Alternative	2003	26 countries U.S.A./Europe	Candesartan	32mg q.d.	23mg q.d. 59% on target dose	NYHA II-IV, ACE-i intolerance	≤40%	Mean age 67 years, 68% ischaemic heart disease, 68% previous HF hospitalisation	0% ACE-i 85% diuretic 55% b-blocker 46% digoxin 43% vasodilators	32	646	Cardiovascular death or HF hospitalisation	
β-blocker	U.S. Carvedilol HF	1996	U.S.A.	Carvedilol	25-50mg b.i.d.	23mg b.i.d. 80% on target dose	Chronic HF, NYHA II-IV	≤35%	Mean age 58 years, mean LVEF 23%	95% ACE-i 95% diuretic 91% digoxin 32% vasodilator	23	256	Mortality	HR 0.41 (0.22-0.80) in men HR 0.23 (0.07-0.69) in women
	CIBIS II	1999	18 European countries	Bisoprolol	10mg q.d.	8.5mg q.d. 63% on target dose	<80 years, NYHA III-IV, stable, chronic HF	≤35%	Mean age 61 years, 50% ischaemic heart disease	96% ACE-i 99% diuretic 52% digoxin 58% vasodilator	19	515	Mortality	Significant benefit in men and women
	MERIT-HF	1999	13 European countries and U.S.A.	Metoprolol	200mg q.d.	159mg q.d. 64% on target dose	Age 40-80, NYHA II-IV, stable, chronic HF	≤40%	Mean age 64 years, 66% ischaemic heart disease	96% ACE-i/ARB 91% diuretic 64% digoxin	23	898	Mortality or all-cause hospitalisation	Significant benefit in men, not in women
	COPERNICUS	2001	21 countries in Europe, Asia, Africa, Australia, U.S.A., and South America	Carvedilol	25mg b.i.d.	18mg b.i.d. 65% on target dose	Low LVEF, inclusion of both inpatient and outpatient clinic	<25%	Mean age 63 years, mean LVEF 20%	97% ACE-i/ARB 99% diuretic 66% digitalis	20	465	Mortality	Significant benefit in men, trend towards benefit in women

	SENIORS	2005	11 European countries	Nebivolol	10 mg q.d.	7·7mg q.d. 68% on target dose	Age ≥70 years, stable, chronic HF	≤35% or HF hospitalisation in the previous year	Mean age 76 years, 68% ischaemic heart disease	82% ACE-I 86% diuretic 39% digoxin	37	785	Mortality or cardiovascular hospital admission	HR 0·93 (0·78-1·11) in men HR 0·72 (0·55-0·93) in women p for interaction 0·11
--	---------	------	-----------------------	-----------	------------	-------------------------------	-----------------------------------	---	--	------------------------------------	----	-----	--	--

505 ACE-i=angiotensin converting enzyme inhibitor, ARB=angiotensin receptor blocker, b.i.d.=bis in die (twice a day), CHARM-Added=Candesartan in heart failure: Assessment of reduction in mortality and morbidity-
506 Added, , CHARM-Alternative= Candesartan in heart failure: Assessment of reduction in mortality and morbidity-Alternative, CIBIS II= Cardiac Insufficiency Bisoprolol Study II, CONSENSUS=Cooperative North
507 Scandinavian Enalapril Survival Study, COPERNICUS= Carvedilol Prospective Randomized Cumulative Survival, ED=emergency department, HF=heart failure, HR=hazard ratio, LVEF=left ventricular ejection
508 fraction, MERIT-HF= Metoprolol CR/XL Randomised Intervention Trial in Congestive Heart Failure, No.=number, NYHA=New York Heart Association, q.d.=quaque die (once a day), SENIORS=Study of the Effects
509 of Nebivolol Intervention on Outcomes and Rehospitalisations in Seniors with Heart Failure, SOLVD-Treatment=Studies of Left Ventricular Dysfunction, U.S.A.=United States of America, Val-HeFT=Valsartan Heart
510 Failure Trial.
511

512 **Table 2.** Baseline characteristics of men and women in BIOSTAT-CHF.

	Men (n=1,308)	Women (n=402)	p-value
Clinical			
Age	70 ± 12	74 ± 12	<0.001
Weight (kg)	85 ± 18	72 ± 16	<0.001
Height (cm)	174 ± 8	162 ± 7	<0.001
BMI (kg/m ²)	27.9 ± 5.2	27.3 ± 5.8	0.06
NYHA (%)			0.27
I	120 (10)	34 (10)	
II	639 (55)	172 (49)	
III	372 (32)	130 (37)	
IV	38 (3)	12 (3)	
LVEF, %	27 ± 7	29 ± 6	<0.001
Systolic blood pressure, mmHg	123 ± 20	126 ± 23	0.002
Diastolic blood pressure, mmHg	76 ± 12	75 ± 13	0.21
Pulse pressure, mmHg	47 ± 15	52 ± 17	<0.001
Heart rate, beats/min	82 ± 21	83 ± 20	0.32
Smoking (%)			<0.001
Never	371 (28)	245 (61)	
Past	725 (56)	114 (28)	
Current	210 (16)	43 (11)	
History of (%)			
Coronary artery disease*	631 (48)	139 (35)	<0.001
Valvular surgery	95 (7)	25 (6)	0.55
Atrial fibrillation	574 (44)	140 (35)	0.002
Stroke	111 (9)	30 (8)	0.58
Peripheral art. disease	140 (11)	22 (6)	0.002
Hypertension	759 (58)	253 (63)	0.10
Diabetes mellitus	431 (33)	109 (27)	0.03
COPD	236 (18)	52 (13)	0.02
Renal disease	332 (25)	78 (19)	0.02
Physical examination (%)			
Rales	638 (50)	205 (52)	0.44
Edema	595 (55)	175 (54)	0.75
Orthopnea	388 (30)	137 (34)	0.10
Hepatomegaly	206 (16)	40 (10)	0.005
Quality of life			
Functional status score	57 [36, 77]	46 [29, 64]	<0.001
Clinical summary score	52 [33, 71]	42 [27, 60]	<0.001
Overall score	54 [36, 71]	44 [31, 60]	<0.001
Laboratory data			
NT-proBNP (pg/mL)	2484 [1073, 5032]	2724 [1193, 5906]	0.18
Hemoglobin (g/dL)	13.9 [12.4, 14.9]	12.8 [11.8, 13.8]	<0.001
Creatinine (μmol/L)	106 [88, 130]	88 [72, 109]	<0.001
Sodium (mmol/L)	140 [137, 142]	140 [138, 142]	0.12

Potassium (mmol/L)	4.3 [4.0, 4.6]	4.2 [3.8, 4.6]	<0.001
Medication (%)			
Baseline			
ACE or ARB	988 (76)	291 (72)	0.23
B-Blocker	1123 (86)	328 (82)	0.045
MRA	775 (59)	191 (48)	<0.001
Diuretics	1302 (100)	401 (100)	0.90
Patients on target dose at baseline			
ACE or ARB	170 (13)	59 (15)	0.44
B-Blocker	66 (5)	21 (5)	0.99
Median dose at baseline			
ACE or ARB	0.25 [0.05, 0.50]	0.25 [0.00, 0.50]	0.814
B-Blocker	0.25 [0.06, 0.47]	0.25 [0.04, 0.38]	0.612
Follow-up			
ACE or ARB	1186 (91)	365 (91)	0.92
B-Blocker	1235 (94)	366 (91)	0.05
MRA	722 (55)	190 (47)	0.006
Patients on target dose at follow-up			
ACE or ARB	304 (23)	99 (25)	0.61
B-Blocker	168 (13)	57 (14)	0.54
Median dose at follow-up			
ACE or ARB	0.50 [0.25, 0.75]	0.50 [0.25, 0.75]	0.502
B-Blocker	0.25 [0.12, 0.50]	0.25 [0.12, 0.50]	0.536

513 * Coronary artery disease: previous myocardial infarction, percutaneous coronary intervention (PCI) and/or coronary artery
514 bypass graft (CABG). BMI=body mass index, NYHA=New York Heart Association, LVEF=left ventricular ejection fraction,
515 BP = blood pressure, COPD=chronic obstructive pulmonary disease, NT-proBNP=N-terminal pro-B-type natriuretic peptide,
516 ACE=angiotensin converting enzyme inhibitor, ARB=angiotensin receptor blocker, MRA=mineralocorticoid receptor
517 antagonist

518

519 **Table 3.** Risk of death or heart failure hospitalization for men and women who received 0, 1-49, 50-99% or $\geq 100\%$ of recommended ACE-inhibitor/ARB and
 520 beta-blocker dose in BIOSTAT-CHF.

ACE-inhibitor/ARBs	Men				Women			
	0% n=122	1-49% n=476	50-99% n=406	$\geq 100\%$ n=304	0% n=37	1-49% n=136	50-99% n=130	$\geq 100\%$ n=99
Hazard ratio (univariable)	2.29 (2.06-2.55)	1.87 (1.69-2.08)	1.19 (1.06-1.33)	Ref.	1.45 (1.18-1.79)	1.04 (0.85-1.26)	0.79 (0.64-0.98)	Ref.
Hazard ratio (multivariable)*	2.18 (1.95-2.43)	1.82 (1.64-2.02)	1.17 (1.04-1.30)	Ref.	1.30 (1.05-1.60)	0.85 (0.70-1.05)	0.67 (0.54-0.84)	Ref.
Hazard ratio (multivariable)**	1.09 (0.97-1.23)	1.24 (1.12-1.38)	0.99 (0.88-1.10)	Ref.	0.79 (0.63-0.99)	0.90 (0.74-1.11)	0.66 (0.53-0.83)	Ref.
Beta-Blockers	Men				Women			
	0% n=73	1-49% n=751	50-99% n=339	$\geq 100\%$ n=145	0% n=36	1-49% n=229	50-99% n=91	$\geq 100\%$ n=46
Hazard ratio (univariable)	1.55 (1.39-1.73)	1.11 (1.00-1.23)	1.16 (1.03-1.29)	Ref.	1.15 (0.94-1.42)	0.73 (0.59-0.89)	0.63 (0.51-0.79)	Ref.
Hazard ratio (multivariable)*	1.46 (1.31-1.63)	1.08 (0.98-1.20)	1.14 (1.03-1.27)	Ref.	1.08 (0.87-1.35)	0.79 (0.65-0.98)	0.74 (0.59-0.92)	Ref.
Hazard ratio (multivariable)**	1.14 (1.03-1.28)	0.95 (0.86-1.06)	1.01 (0.9-1.13)	Ref.	1.02 (0.83-1.26)	0.84 (0.69-1.03)	0.76 (0.61-0.95)	Ref.

521

522 *Multivariable model 1: adjusted for body surface are (BSA).

523 **Multivariable model 2: adjusted for BIOSTAT-CHF model for death and/or heart failure hospitalization including age, heart failure hospitalization in previous year, systolic

524 blood pressure, presence of peripheral edema, NT-proBNP, hemoglobin, sodium, high-density lipoprotein, and the use of beta-blockers at baseline.

525 **Supplementary Appendix**

526 **Table S1. Recommended doses of ACE-inhibitors, ARBs, and beta-blockers in ESC guidelines for patients**
 527 **with LVEF <40%.**

Drug	Class	Total daily dose
Captopril	ACE-inhibitor	150 mg
Enalapril	ACE-inhibitor	20 mg
Lisinopril	ACE-inhibitor	35 mg
Ramipril	ACE-inhibitor	10 mg
Trandolapril	ACE-inhibitor	4 mg
Perindopril	ACE-inhibitor	8 mg
Candesartan	ARB	32 mg
Valsartan	ARB	320 mg
Losartan	ARB	150 mg
Bisoprolol	Beta-blocker	10 mg
Carvedilol	Beta-blocker	50–100 mg*
Metoprolol	Beta-blocker	200 mg
Nebivolol	Beta-blocker	10 mg

528 *A maximum dose of 50mg twice daily can be administered to patients weighting over 85 kg.

Table S2. Baseline characteristics of included and excluded patients (BIOSTAT-CHF).

	Included	Excluded	p-value
	n=1710	n=806	
Clinical			
Age	71 ± 12	76 ± 11	<0.001
Women (%)	402 (24)	268 (33)	<0.001
Weight (kg)	82 ± 18	81 ± 19	0.46
Height (cm)	172 ± 9	170 ± 9	<0.001
BMI (kg/m ²)	27.8 ± 5.4	28.1 ± 5.8	0.15
NYHA (%)			0.06
I	154 (10)	80 (12)	
II	811 (54)	330 (48)	
III	502 (33)	248 (36)	
IV	50 (3)	32 (5)	
LVEF, %	27 ± 7	64 ± 31	<0.001
Systolic blood pressure, mmHg	124 ± 21	127 ± 24	<0.001
Diastolic blood pressure, mmHg	75 ± 13	74 ± 15	0.001
Heart rate, beats/min	82 ± 21	83 ± 22	0.37
History of (%)			
Coronary artery disease*	770 (45)	361 (45)	0.94
Valvular surgery	120 (7)	59 (7)	0.85
Atrial fibrillation	714 (42)	429 (53)	<0.001
Peripheral art. disease	162 (10)	111 (14)	0.002
Hypertension	1012 (59)	557 (69)	<0.001
Diabetes mellitus	540 (32)	279 (35)	0.14
COPD	288 (17)	148 (18)	0.38
Renal disease	410 (24)	286 (36)	<0.001
Physical examination (%)			
Rales	843 (50.3)	448 (58)	<0.001
Edema	770 (54.8)	486 (70)	<0.001
Orthopnea	525 (30.7)	354 (44)	<0.001
Hepatomegaly	246 (14.4)	112 (14)	0.813
Quality of life			
Overall score	51 [34, 69]	43 [27, 59]	<0.001
Laboratory data			
NT-proBNP (pg/mL)	2550 [1103, 5178]	3135 [1369, 6717]	<0.001
Hemoglobin (g/dL)	13.6 [12.2, 14.7]	12.70 [11.3, 13.9]	<0.001
Creatinine (μmol/L)	101 [83, 125]	105 [86, 142]	<0.001
Sodium (mmol/L)	140 [137, 142]	139 [136, 141]	<0.001
Potassium (mmol/L)	4.2 [3.9, 4.6]	4.2 [3.9, 4.6]	0.09
Baseline medication (%)			
ACE or ARB	1279 (75)	541 (67)	<0.001
B-Blocker	1451 (85)	642 (80)	0.001
MRA	966 (57)	373 (46)	<0.001
Diuretics	1703 (100)	801 (99)	0.68

530 * Coronary artery disease: previous myocardial infarction, percutaneous coronary intervention (PCI) and/or coronary artery
531 bypass graft (CABG). BMI=body mass index, NYHA=New York Heart Association, LVEF=left ventricular ejection fraction,
532 BP = blood pressure, COPD=chronic obstructive pulmonary disease, NT-proBNP=N-terminal pro-B-type natriuretic peptide,
533 ACE=angiotensin converting enzyme inhibitor, ARB=angiotensin receptor blocker, MRA=mineralocorticoid receptor
534 antagonist.

Table S3. Baseline characteristics of included and excluded patients (ASIAN-HF).

	Included	Excluded	p-value
	n=4500	n=776	
Clinical			
Age	60 ± 13	60 ± 13	0.27
Women (%)	961 (21)	192 (25)	0.039
Weight (kg)	68 ± 16	66 ± 16	0.06
Height (cm)	164 ± 9	163 ± 9	0.006
BMI (kg/m ²)	24.9 ± 5.1	24.7 ± 5.4	0.29
NYHA (%)			<0.001
I	556 (14)	57 (8)	
II	2116 (52)	387 (55)	
III	1154 (28)	223 (32)	
IV	255 (6)	36 (5)	
LVEF, %	27 ± 7	27 ± 7	0.63
Systolic blood pressure, mmHg	118 ± 20	121 ± 21	<0.001
Diastolic blood pressure, mmHg	72 ± 12	74 ± 13	<0.001
Heart rate, beats/min	81 ± 19	84 ± 20	<0.001
History of (%)			
Coronary artery disease*	2289 (51)	339 (45)	0.005
Atrial fibrillation	831 (19)	110 (15)	0.014
Stroke	302 (7)	36 (5)	0.06
Peripheral art. disease	157 (4)	22 (3)	0.51
Hypertension	2323 (52)	396 (59)	0.59
Diabetes mellitus	1841 (41)	279 (37)	0.06
COPD	367 (8)	67 (9)	0.52
Physical examination (%)			
Rales	726 (16)	153 (20)	0.004
Edema	1012 (23)	229 (31)	<0.001
Hepatomegaly	238 (5)	48 (6)	0.25
Quality of life			
Overall score	67 [47, 84]	65 [44, 81]	0.004
Laboratory data			
Hemoglobin (g/dL)	13.2 [11.7, 14.6]	13.1 [11.6, 14.6]	0.860
Creatinine (mg/dL)	1.1 [0.90, 1.44]	1.2 [0.9, 1.6]	0.001
Sodium (mmol/L)	139 [136, 141]	138 [135, 140]	<0.001
Potassium (mmol/L)	4.2 [3.9, 4.6]	4.2 [3.8, 4.5]	0.021
Baseline medication (%)			
ACE or ARB	3236 (72)	417 (74)	0.44
B-Blocker	3497 (79)	442 (70)	<0.001
MRA	2685 (60)	313 (40)	<0.001
Diuretics	3696 (82)	490 (76)	<0.001

* Coronary artery disease: previous myocardial infarction, percutaneous coronary intervention (PCI) and/or coronary artery bypass graft (CABG), BMI=body mass index, NYHA=New York Heart Association, LVEF=left ventricular ejection fraction, BP = blood pressure, COPD=chronic obstructive pulmonary disease, ACE=angiotensin converting enzyme inhibitor, ARB=angiotensin receptor blocker, MRA=mineralocorticoid receptor antagonist.

Table S4. Clinical characteristics of men and women at 9 months in BIostat-CHF.

	Men	Women	p-value
Follow-up visit			
Weight (kg)	86 ± 19	73 ± 16	<0.001
Systolic blood pressure, mmHg	124 ± 20	125 ± 21	0.32
Diastolic blood pressure, mmHg	75 ± 12	75 ± 12	0.48
Heart rate, beats/min	72 ± 15	73 ± 14	0.55

Table S5. Overview of individual drug intake by men and women.

	Men <i>n</i>, %	Women <i>n</i>, %
ACE-inhibitor		
Ramipril	565 (47)	143 (39)
Enalapril	163 (14)	48 (13)
Perindopril	162 (14)	61 (17)
Lisinopril	36 (3)	9 (3)
Fosinopril	38 (3)	8 (2)
Trandolapril	17 (1)	3 (1)
Quinapril	14 (1)	3 (1)
Captopril	15 (1)	1 (1)
ARB		
Candesartan	58 (5)	30 (8)
Valsartan	46 (4)	22 (6)
Losartan	31 (3)	18 (5)
Irbesartan	18 (2)	6 (2)
Telmisartan	9 (1)	4 (1)
Beta-blocker		
Carvedilol	495 (40)	119 (32)
Bisoprolol	448 (36)	144 (39)
Metoprolol	229 (19)	84 (23)
Nebivolol	52 (4)	19 (5)
Atenolol	5 (1)	1 (1)

ACE=angiotensin converting enzyme inhibitor, ARB=angiotensin receptor blocker.

Table S6. Baseline characteristics of men and women in ASIAN-HF.

	Men	Women	p-value
	(n=3,539)	(n=961)	
Clinical			
Age	60 ± 13	61 ± 14	0.006
Weight (kg)	70 ± 15	59 ± 13	<0.001
Height (cm)	167 ± 7	155 ± 7	<0.001
BMI (kg/m ²)	25.1 ± 5.0	24.5 ± 5.2	0.006
NYHA (%)			<0.001
I	467 (15)	89 (10)	
II	1668 (52)	448 (52)	
III	884 (28)	270 (31)	
IV	195 (6)	60 (7)	
LVEF, %	27 ± 7	29 ± 7	<0.001
Systolic blood pressure, mmHg	118 ± 20	119 ± 21	0.12
Diastolic blood pressure, mmHg	72 ± 12	71 ± 12	<0.001
Pulse pressure, mmHg	45 ± 15	48 ± 16	<0.001
Heart rate, beats/min	81 ± 19	82 ± 19	0.009
Smoking (%)			<0.001
Never	1613 (46)	876 (91)	
Past	1364 (39)	60 (6)	
Current	560 (16)	25 (3)	
History of (%)			
Coronary artery disease*	1953 (55)	336 (35)	<0.001
Atrial fibrillation	670 (19)	161 (17)	0.14
Stroke	243 (7)	59 (6)	0.47
Peripheral art. disease	133 (4)	24 (3)	0.07
Hypertension	1854 (52)	469 (49)	0.05
Diabetes mellitus	1470 (42)	371 (39)	0.11
COPD	293 (8)	74 (8)	0.61
Physical examination (%)			
Rales	587 (17)	139 (15)	0.12
Edema	797 (23)	215 (22)	0.95
Hepatomegaly	199 (6)	39 (4)	0.07
Quality of life			
Clinical summary score	74 [55, 90]	69 [50, 86]	<0.001
Overall score	68 [49, 84]	64 [43, 81]	<0.001
Laboratory data			
Hemoglobin (g/dL)	13.4 [11.9, 14.8]	12.2 [10.8, 13.4]	<0.001
Creatinine (mg/dL)	1.14 [0.92, 1.48]	0.94 [0.75, 1.24]	<0.001
Sodium (mmol/L)	139 [136, 141]	139 [136, 141]	0.02
Potassium (mmol/L)	4.2 [3.9, 4.6]	4.2 [3.9, 4.6]	0.34
Medications (%)			
ACE or ARB	2559 (72)	677 (70)	0.27
B-Blocker	2779 (79)	718 (75)	0.009
MRA	2141 (61)	544 (57)	0.03

Diuretics	2901 (82)	795 (83)	0.62
-----------	-----------	----------	------

* Coronary artery disease: previous myocardial infarction, percutaneous coronary intervention (PCI) and/or coronary artery bypass graft (CABG), BMI=body mass index, NYHA=New York Heart Association, LVEF=left ventricular ejection fraction, BP = blood pressure, COPD=chronic obstructive pulmonary disease, ACE=angiotensin converting enzyme inhibitor, ARB=angiotensin receptor blocker, MRA=mineralocorticoid receptor antagonist.

Table S7. Baseline characteristics of men and women using 0-49% versus 50-≥100% of recommended target doses of ACE-inhibitors/ARBs.

	Men			Women		
	0-49% of target dose n=598	50-≥100% of target dose n=710	p-value	0-49% of target dose n=173	50-≥100% of target dose n=229	p-value
Clinical						
Age	70 ± 12	69 ± 11	0.02	74 ± 13	74 ± 11	0.81
Weight (kg)	82 ± 16	88 ± 18	<0.001	70 ± 17	73 ± 16	0.07
Height (cm)	174 ± 7	175 ± 8	0.004	162 ± 7	162 ± 7	0.71
BMI (kg/m ²)	27.2 ± 4.8	28.6 ± 5.5	<0.001	26.8 ± 6.0	27.8 ± 5.6	0.08
NYHA (%)			0.15			0.09
I	57 (11)	63 (10)		9 (6)	25 (13)	
II	274 (51)	365 (58)		75 (50)	97 (49)	
III	187 (35)	185 (29)		57 (38)	73 (37)	
IV	18 (3)	20 (3)		8 (5)	4 (2)	
LVEF, %	26 ± 7	27 ± 7	0.006	28 ± 6	30 ± 6	0.005
Systolic blood pressure, mmHg	118 ± 19	127 ± 20	<0.001	121 ± 23	130 ± 22	<0.001
Diastolic blood pressure, mmHg	73 ± 12	78 ± 12	<0.001	72 ± 13	77 ± 13	<0.001
Heart rate, beats/min	83 ± 20	81 ± 22	0.12	81 ± 19	84 ± 21	0.11
Smoking (%)			0.91			0.75
Never	173 (29)	198 (28)		109 (63)	136 (59)	
Past	328 (55)	397 (56)		47 (27)	67 (29)	
Current	96 (16)	114 (16)		17 (10)	26 (11)	
History of (%)						
Coronary artery disease*	294 (49)	337 (48)	0.58	75 (43)	64 (28)	0.002
Valvular surgery	56 (9)	39 (6)	0.01	16 (9)	9 (4)	0.05
Atrial fibrillation	289 (48)	285 (40)	0.004	67 (39)	73 (32)	0.19
Peripheral art. disease	67 (11)	73 (10)	0.65	16 (9)	6 (3)	0.008
Hypertension	299 (50)	460 (65)	<0.001	106 (61)	147 (64)	0.62

Diabetes mellitus	182 (30)	249 (35)	0.09	46 (27)	63 (28)	0.93
COPD	123 (21)	113 (16)	0.04	18 (10)	34 (15)	0.24
Renal disease	195 (33)	137 (19)	<0.001	45 (26)	33 (14)	0.005
Physical examination (%)						
Rales	339 (57)	299 (43)	<0.001	95 (56)	110 (50)	0.28
Edema	292 (58)	303 (53)	0.10	75 (53)	100 (54)	0.92
Orthopnea	195 (33)	193 (27)	0.04	69 (40)	68 (30)	0.04
Hepatomegaly	120 (20)	86 (12)	<0.001	20 (12)	20 (9)	0.43
Quality of life						
Overall score	50 [31, 67]	57 [40, 74]	<0.001	42 [27, 56]	46 [32, 62]	0.04
Laboratory data						
NT-proBNP (pg/mL)	2983 [1267, 6425]	2122 [912, 4359]	<0.001	3056 [1399, 7673]	2430 [937, 4771]	0.002
Hemoglobin (g/dL)	13.6 [12.2, 14.8]	14.0 [12.8, 15.1]	<0.001	12.8 [11.5, 13.6]	13.0 [12.1, 14.0]	0.03
Creatinine (μmol/L)	109 [91, 143]	102 [86, 123]	<0.001	95 [76, 121]	83 [71, 104]	<0.001
Sodium (mmol/L)	139 [137, 141]	140 [137, 142]	0.02	140 [138, 142]	140 [138, 142]	0.13
Potassium (mmol/L)	4.3 [4.0, 4.6]	4.3 [4.0, 4.6]	0.63	4.2 [3.9, 4.7]	4.1 [3.7, 4.5]	0.12
Baseline medication (%)						
ACE or ARB	416 (70)	572 (81)	<0.001	113 (65)	178 (78)	0.008
B-Blocker	509 (85)	614 (87)	0.53	143 (83)	185 (81)	0.73
MRA	369 (62)	406 (57)	0.11	95 (55)	96 (42)	0.01
Diuretics	594 (99)	708 (100)	0.53	173 (100)	228 (100)	1.00

* Coronary artery disease: previous myocardial infarction, percutaneous coronary intervention (PCI) and/or coronary artery bypass graft (CABG), BMI=body mass index, NYHA=New York Heart Association, LVEF=left ventricular ejection fraction, BP = blood pressure, COPD=chronic obstructive pulmonary disease, ACE=angiotensin converting enzyme inhibitor, ARB=angiotensin receptor blocker, MRA=mineralocorticoid receptor antagonist.

Table S8. Baseline characteristics of men and women using 0-49% versus 50-≥100% of recommended target doses of β-blockers.

	Men			Women		
	0-49% of target dose n=824	50-≥100% of target dose n=484	p-value	0-49% of target dose n=265	50-≥100% of target dose n=137	p-value
Clinical						
Age	70 ± 12	69 ± 12	0.33	74 ± 12	74 ± 12	0.68
Weight (kg)	83 ± 18	88 ± 18	<0.001	70 ± 16	76 ± 16	0.001
Height (cm)	174 ± 7	176 ± 8	<0.001	161 ± 7	164 ± 7	<0.001
BMI (kg/m ²)	27.6 ± 5.1	28.4 ± 5.4	0.007	27.0 ± 5.8	28.0 ± 5.6	0.10
NYHA (%)			0.53			0.47
I	72 (10)	48 (11)		19 (8)	15 (13)	
II	406 (56)	233 (53)		115 (49)	57 (50)	
III	234 (32)	138 (32)		90 (39)	40 (35)	
IV	20 (3)	18 (4)		9 (4)	3 (3)	
LVEF, %	27 ± 7	27 ± 7	0.12	29 ± 6	28 ± 7	0.27
Systolic blood pressure, mmHg	122 ± 20	124 ± 21	0.09	126 ± 23	128 ± 23	0.46
Diastolic blood pressure, mmHg	75 ± 12	77 ± 13	<0.001	74 ± 13	76 ± 14	0.15
Heart rate, beats/min	81 ± 20	83 ± 22	0.04	81 ± 19	86 ± 21	0.02
Smoking (%)			0.91			0.09
Never	232 (28)	139 (29)		171 (65)	74 (54)	
Past	456 (55)	269 (56)		66 (25)	48 (35)	
Current	135 (16)	75 (16)		28 (11)	15 (11)	
History of (%)						
Coronary artery disease*	412 (50)	219 (45)	0.11	83 (31)	56 (41)	0.07
Valvular surgery	58 (7)	37 (8)	0.77	16 (6)	9 (7)	1.00
Atrial fibrillation	334 (41)	240 (50)	0.002	80 (30)	60 (44)	0.009
Peripheral art. disease	107 (13)	33 (7)	0.001	13 (5)	9 (7)	0.64
Hypertension	477 (58)	282 (58)	0.94	167 (63)	86 (63)	1.00
Diabetes mellitus	281 (34)	150 (31)	0.27	74 (28)	35 (26)	0.70

COPD	153 (19)	83 (17)	0.57	38 (14)	14 (10)	0.31
Renal disease	213 (26)	119 (25)	0.66	52 (20)	26 (19)	0.98
Physical examination (%)						
Rales	433 (54)	205 (43)	0.001	137 (53)	68 (51)	0.85
Edema	387 (57)	208 (53)	0.23	111 (53)	64 (56)	0.71
Orthopnea	271 (33)	117 (24)	0.001	87 (33)	50 (37)	0.55
Hepatomegaly	141 (17)	65 (13)	0.09	30 (11)	10 (7)	0.27
Quality of life						
Overall score	53 [34, 70]	55 [38, 73]	0.05	43 [30, 58]	46 [32, 64]	0.15
Laboratory data						
NT-proBNP (pg/mL)	2527 [1132, 5003]	2435 [957, 5087]	0.40	2637 [1157, 5640]	2938 [1417, 6756]	0.21
Hemoglobin (g/dL)	13.8 [12.3, 14.8]	14.0 [12.7, 15.1]	0.03	12.9 [11.8, 13.9]	12.8 [11.8, 13.8]	0.84
Creatinine (µmol/L)	106 [88, 132]	103 [88, 128]	0.16	88 [72, 108]	88 [71, 113]	0.78
Sodium (mmol/L)	140 [137, 142]	140 [138, 142]	0.02	140 [138, 142]	140 [138, 142]	0.87
Potassium (mmol/L)	4.3 [4.0, 4.6]	4.3 [4.0, 4.6]	0.80	4.2 [3.8, 4.6]	4.2 [3.7, 4.5]	0.39
Baseline medication (%)						
ACE or ARB	619 (75)	369 (76)	0.70	192 (73)	99 (72)	1.00
B-Blocker	674 (82)	449 (93)	<0.001	205 (77)	123 (90)	0.004
MRA	513 (62)	262 (54)	0.005	129 (49)	62 (45)	0.59
Diuretics	818 (99)	484 (100)	0.15	265 (100)	136 (99)	0.74

* Coronary artery disease: previous myocardial infarction, percutaneous coronary intervention (PCI) and/or coronary artery bypass graft (CABG), BMI=body mass index, NYHA=New York Heart Association, LVEF=left ventricular ejection fraction, BP = blood pressure, COPD=chronic obstructive pulmonary disease, ACE=angiotensin converting enzyme inhibitor, ARB=angiotensin receptor blocker, MRA=mineralocorticoid receptor antagonist.

Table S9. The number of men and women reaching specific dose level combinations of ACE-inhibitors/ARBs and β -blockers in BIostat-CHF and ASIAN-HF.

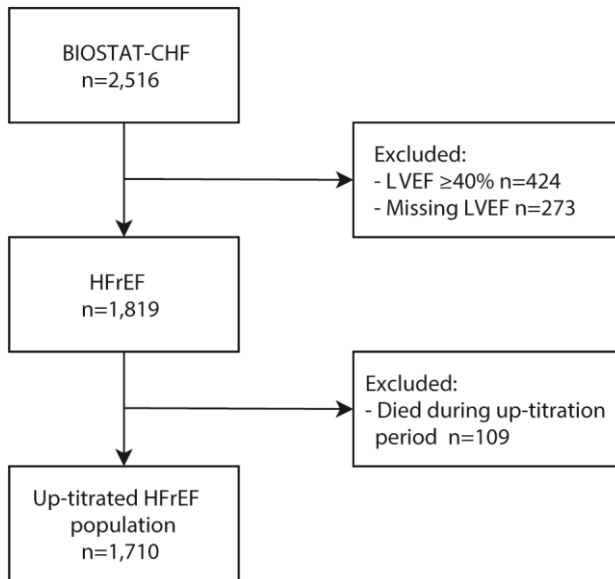
BIostat-CHF		Men n=1,308	Women n=402
ACE-i/ARB dose:	β-blocker dose:		
Target dose	Target dose	58 (4%)	19 (5%)
50-100%	50-100%	317 (24%)	88 (22%)
50-100%	0-49%	393 (30%)	141 (35%)
0-49%	50-100%	167 (13%)	49 (12%)
0-49%	0-49%	431 (33%)	124 (31%)
ASIAN-HF			
		Men n=3,539	Women n=961
ACE-i/ARB dose:	β-blocker dose:		
Target dose	Target dose	77 (2%)	22 (2%)
50-100%	50-100%	384 (11%)	103 (11%)
50-100%	0-49%	724 (20%)	194 (20%)
0-49%	50-100%	584 (17%)	135 (14%)
0-49%	0-49%	1790 (51%)	516 (54%)

Table S10. Overview of the reasons why men and women were not using target doses of ACE-inhibitors/ARBs and β -blockers after the up-titration period of BIOSTAT-CHF.

	Men n=1308	Women n=402	p-value
ACE-inhibitors/ARBs reason (%)			
On target dose	304 (23)	99 (25)	0.61
Not on target dose	1004 (77)	303 (75)	
Symptoms/side effects/non-cardiac organ dysfunction	118 (12)	48 (16)	0.039
Not-specified/unknown	886 (88)	255 (84)	
β-blockers reason (%)			
On target dose	168 (13)	57 (14)	0.54
Not on target dose	1140 (87)	345 (86)	
Symptoms/side effects/non-cardiac organ dysfunction	103 (9)	36 (10)	0.13
Not-specified/unknown	1037 (91)	309 (90)	

ACE=angiotensin converting enzyme inhibitor, ARB=angiotensin receptor blocker.

Figure S1. Flow diagram of selected patients.



BIostat-CHF= the BIOlogy Study to TAilored Treatment in Chronic Heart Failure, LVEF=left ventricular ejection fraction, HFrEF=heart failure with reduced ejection fraction.

Figure S2. Density plot of the dose levels used in BIOSTAT-CHF (blue) and ASIAN-HF (red).

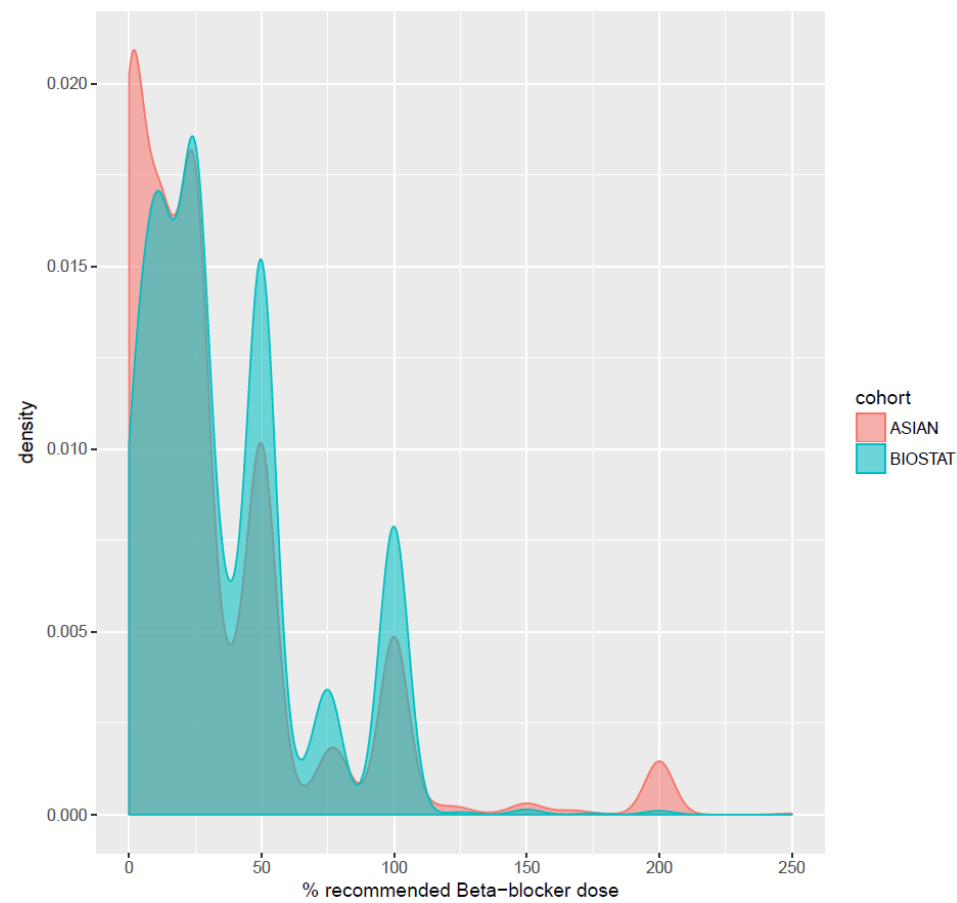
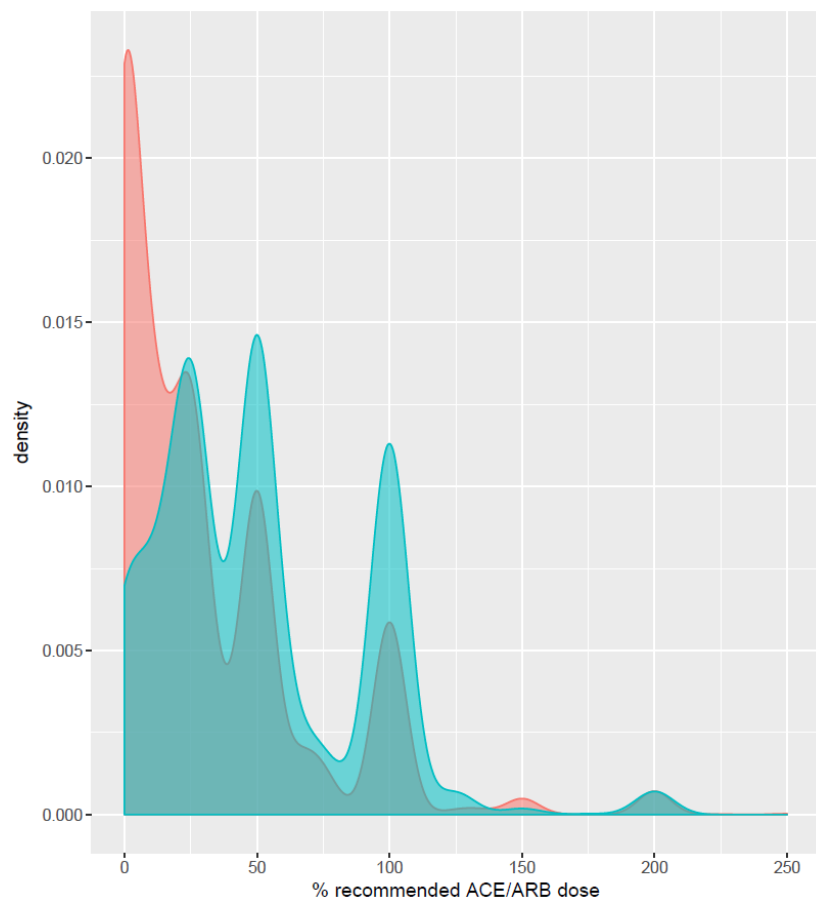
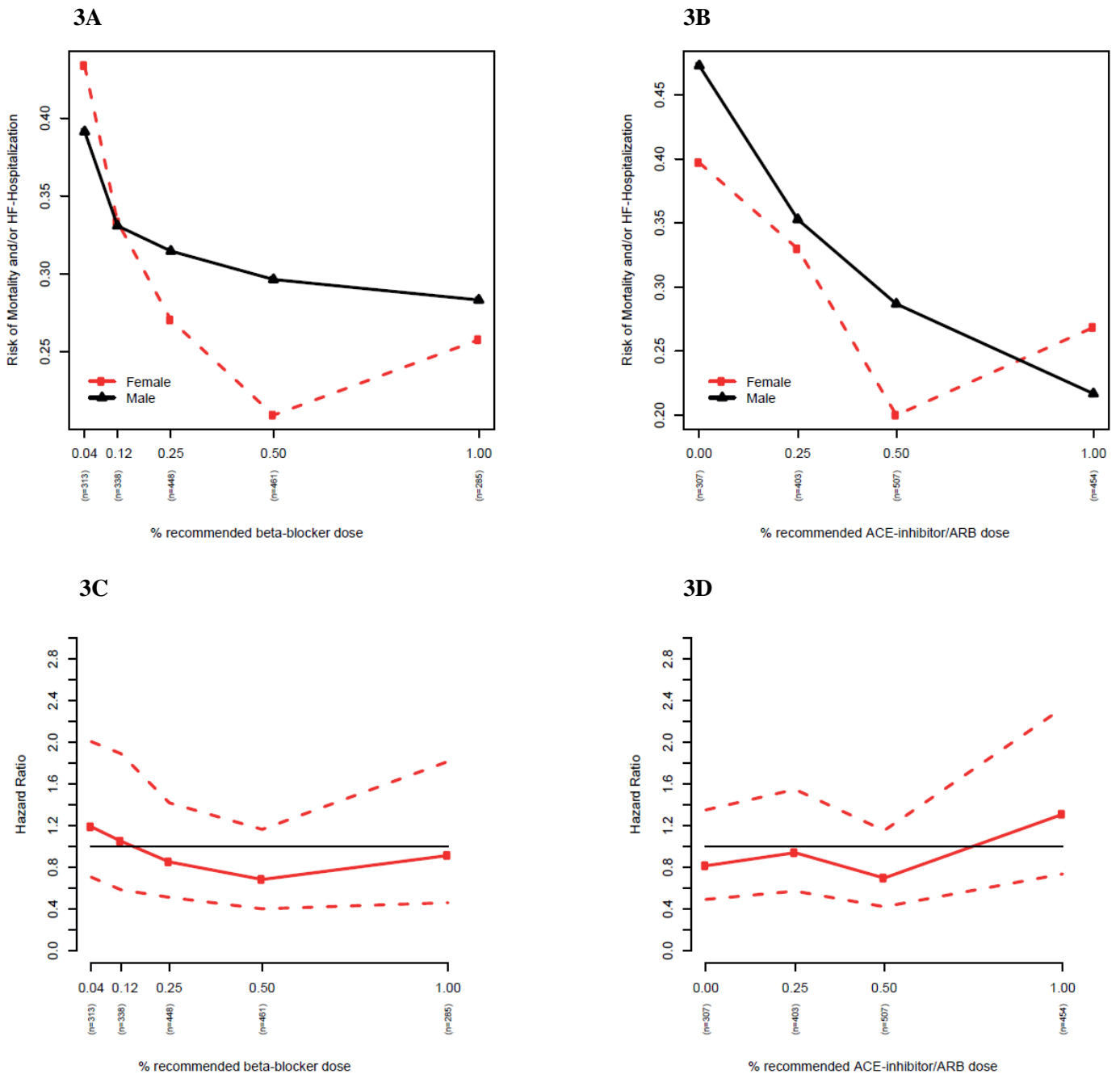


Figure S3. Subpopulation treatment effect pattern plot (STEPP) of men and women per % of recommended beta-blockers (3A) and ACE-inhibitors/ARBs (3B) dose in BIOSTAT-CHF, and the ratio of the relative risk of women divided by the relative risk in men for beta-blockers (3C) and ACE-inhibitors/ARBs (3D), resulting in a hazard ratio for women compared with men, including confidence intervals of this ratio.



Appendix S1.

THE ASIAN-HF EXECUTIVE COMMITTEE

- Professor A. Mark Richards (as Chairman), Cardiovascular Research Institute, National University of Singapore, Singapore. Email: mdcarthu@nus.edu.sg
- Professor Carolyn S.P. Lam (as Principal Investigator), National Heart Centre Singapore, Duke-NUS Medical School, Singapore. Email: carolyn.lam@duke-nus.edu.sg
- Professor Inder Anand (as Director, Publications Committee), University of Minnesota Medical School, VA Medical Center Minneapolis and San Diego, United States of America. Email: anand001@umn.edu
- Dr Chung-Lieh Hung, Mackay Memorial Hospital, Taipei, Taiwan. Email: jotaro3791@gmail.com
- Professor Lieng Hsi Ling (as Director, Echo Core Laboratory), Cardiovascular Research Institute, National University of Singapore, Singapore. Email: lieng_hsi_ling@nuhs.edu.sg
- Dr Houg Bang Liew, Queen Elizabeth II Hospital, Clinical Research Center, Sabah, Malaysia. Email: hbliew22@gmail.com
- Dr Calambur Narasimhan, Care Hospital, Hyderabad, India. Email: calambur@hotmail.com
- Dr Tachapong Ngarmukos, Ramathibodi Hospital, Mahidol University, Bangkok, Thailand. Email: tachaponis.nga@mahidol.ac.th
- Dr Sang Weon Park, SeJong General Hospital, Seoul, South Korea. Email: swparkmd@gmail.com
- Dr Eugenio Reyes, Manila Doctors Hospital, Manila, Philippines. Email: eugenereyes@yahoo.com
- Professor Bambang B. Siswanto, National Cardiovascular Center Universitas Indonesia, Jakarta, Indonesia. Email: bambbs@gmail.com
- Professor Wataru Shimizu, Department of Cardiovascular Medicine, Nippon Medical School, Tokyo, Japan. Email: wshimizu@nms.ac.jp
- Professor Shu Zhang, Fuwai Cardiovascular Hospital, Beijing, People's Republic of China. Email: zsfuwai@vip.163.com

COUNTRY AND SITE INVESTIGATORS

China

Fuwai Hospital: **Shu Zhang** (Country PI), Xiaohan Fan, Keping Chen. Ruijin Hospital, Shanghai Jiaotong university: Liqun Wu, Yucai Xie, Qi Jin, Tianyou Ling. The First Affiliated Hospital With Nanjing Medical University: Xinli Li, Fang Zhou, Yanli Zhou, Dongjie Xu, Haifeng Zhang. Zhongshan Hospital Fudan University: Yangang Su, Xueying Chen, Shengmei Qin, Jingfeng Wang, Xue Gong, Zhaodi Wu.

Hong Kong

The Chinese University of Hong Kong: **Cheuk Man Yu** (Country PI).

India

CARE Hospital: **Calambur Narasimhan** (Country PI), B K S Sastry, Arun Gopi, K Raghu, C Sridevi, Daljeet Kaur. Care Institute of Medical Sciences: Ajay Naik, Keyur Parikh, Anish Chandarana, Urmil Shah, Milan Chag, Hemang Baxi, Satya Gupta, Jyoti Bhatia, Vaishali Khakhkhar, Vineet Sankhla, Tejas Patel, Vipul Kapoor. Hero Dayanand Medical College Heart Institute: Gurpreet Singh Wander, Rohit Tandon. Medanta-The Medicity: Vijay Chopra, Manoj Kumar, Hatinder Jeet Singh Sethi, Rashmi Verma, Sanjay Mittal. Sir Ganga Ram Hospital: Jitendra Sawhney, Manish Kr. Sharma. Westfort Hi-Tech Hospital Ltd: Mohanan Padinhare Purayil.

Indonesia

Rumah Sakit Jantung dan Pembuluh Darah Harapan Kita: **Bambang Budi Siswanto** (Country PI). RS Dr Hasan Sadikin: Pintoko Tedjokusumo, Erwan Martanto, Erwinanto. R S Khusus Jantung Binawaluya: Muhammad Munawar, Jimmy Agung Pambudi. RS Siloam Karawaci: Antonia Lukito, Ingrid Pardede, Alvin Thengker, Vito Damay, Siska Suridanda Danny, Rarsari Surarso.

Japan

Nippon Medical School: **Wataru Shimizu** (Country PI), National Cerebral and Cardiovascular Center: Takashi Noda, Ikutaro Nakajima, Mitsuru Wada, Kohei Ishibashi. Kinki University Hospital Cardiovascular Center: Takashi Kurita, Ryoubun Yasuoka. Nippon Medical School Hospital: Kuniya Asai, Kohji Murai, Yoshiaki Kubota, Yuki Izumi. Toho University Omori Medical Center: Takanori Ikeda, Shinji Hisatake, Takayuki Kabuki,

Shunsuke Kiuchi, Tokyo Women's Medical University: Nobuhisa Hagiwara, Atsushi Suzuki, Dr. Tsuyoshi Suzuki.

Korea

SeJong General Hospital: **Sang-Weon Park** (Country PI), Suk Keun Hong, SookJin Lee, Lim Dal Soo, Dong-Hyeok Kim. Korea University Anam Hospital: Jaemin Shim, Seong-Mi Park, Seung-Young Roh, Young Hoon Kim, Mina Kim, Jong-Il Choi. Korea University Guro Hospital: Jin Oh Na, Seung Woon Rha, Hong Seog Seo, Dong Joo Oh, Chang Gyu Park, Eung Ju Kim, Sunki Lee, Severance Hospital, Yonsei University Health System: Boyoung Joung, Jae-Sun Uhm, Moon Hyoung Lee, In-Jeong Cho, Hui-Nam Park. Chonnam National University Hospital: Hyung-Wook Park, Jeong-Gwan Cho, Namsik Yoon, KiHong Lee, Kye Hun Kim. Korea University Ansan Hospital: Seong Hwan Kim.

Malaysia

Hospital Queen Elizabeth II: **Houng Bang Liew** (Country PI), Sahrin Saharudin, Boon Cong Beh, Yu Wei Lee, Chia How Yen, Mohd Khairi Othman, Amie-Anne Augustine, Mohd Hariz Mohd Asnawi, Roberto Angelo Mojolou, You Zhuan Tan, Aida Nurbaini Arbain, Chii Koh Wong. Institut Jantung Negara: Razali Omar, Azmee Mohd Ghazi, Surinder Kaur Khelae, David S.P. Chew, Lok Bin Yap, Azlan Hussin, Zulkeflee Muhammad, Mohd. Ghazi Azmee. University Malaya Medical Centre: Imran Zainal Abidin, Ahmad Syadi Bin Mahmood Zhudi, Nor Ashikin Md Sari, Ganiga Srinivasaiah Sridhar, Ahmad Syadi Mahmood Zuhdi. Muhammad Dzafir Ismail. Sarawak General Hospital Heart Centre: Tiong Kiam Ong, Yee Ling Cham, Ning Zan Khiew, Asri Bin Said, Alan Yean Yip Fong, Nor Hanim Mohd Amin, Keong Chua Seng, Sian Kong Tan, Kuan Leong Yew.

Philippines

Manila Doctors Hospital: **Eugenio Reyes** (Country PI), Jones Santos, Allan Lim. Makati Medical Center: Raul Lapitan, Ryan Andal, Philippine Heart Center: Eleanor Lopez.

Singapore

National Heart Centre Singapore: **Carolyn S.P. Lam** (Country PI), Kheng Leng David Sim, Boon Yew Tan, Choon Pin Lim, Louis L.Y. Teo, Laura L.H. Chan. National University Heart Centre: Lieng Hsi Ling, Ping Chai, Ching Chiew Raymond Wong, Kian Keong Poh, Tan Tock Seng Hospital: Poh Shuan Daniel Yeo, Evelyn M. Lee, Seet Yong Loh, Min Er Ching, Deanna Z.L. Khoo, Min Sen Yew, Wenjie Huang. Changi General Hospital-Parent: Kui Toh Gerard Leong, Jia Hao Jason See, Yaozong Benji Lim, Svenszeat Tan, Colin Yeo, Siang Chew Chai. Singapore General Hospital-Parent: Fazlur Rehman Jaufeerally, Haresh Tulsidas, Than Aung. Khoo Teck Puat Hospital: Hean Yee Ong, Lee Fong Ling, Dinna Kar Nee Soon

Taiwan

Mackay Memorial Hospital, Taipei, Taiwan: **Chung-Lieh Hung** (Country PI), Hung-I Yeh, Jen-Yuan Kuo, Chih-Hsuan Yen. National Taiwan University Hospital: Juey-Jen Hwang, Kuo-Liong Chien, Ta-Chen Su, Lian-Yu Lin, Jyh-Ming Juang, Yen-Hung Lin, Fu-Tien Chiang, Jiunn-Lee Lin, Yi-Lwun Ho, Chii-Ming Lee, Po-Chih Lin, Chi-Sheng Hung, Sheng-Nan Chang, Jou-Wei Lin, Chih-Neng Hsu. Taipei Veterans General Hospital: Wen-Chung Yu, Tze-Fan Chao, Shih-Hsien Sung, Kang-Ling Wang, Hsin-Bang Leu, Yenn-Jiang Lin, Shih-Lin Chang, Po-Hsun Huang, Li-Wei Lo, Cheng-Hsueh Wu. China Medical University Hospital: Hsin-Yueh Liang, Shih-Sheng Chang, Lien-Cheng Hsiao, Yu-Chen Wang, Chiung-Ray Lu, Hung-Pin Wu, Yen-Nien Lin, Ke-Wei Chen, Ping-Han Lo, Chung-Ho Hsu, Li-Chuan Hsieh.

Thailand

Ramathibodi Hospital: **Tachapong Ngarmukos** (Country PI), Mann Chandavimol, Teerapat Yingchoncharoen, Prasart Laothavorn. Phramongkutklo Hospital: Waraporn Tiyanon. Maharaj Nakorn Chiang Mai Hospital: Wanwarang Wongcharoen, Arintaya Phrommintikul.