

# National EuroVelo Coordination Centre (NECC) presentation

2023

[www.eurovelo.com](http://www.eurovelo.com)  
[www.ecf.com](http://www.ecf.com)

# What is EuroVelo?

EuroVelo is the **European cycle route network** – a network of 17 long distance cycle routes that cross and connect the whole of Europe. The total length will be over 90,000 km when complete. The development of EuroVelo will lead to **safe, direct, coherent and connected** cycling infrastructure and cycle route networks that will benefit all categories of cyclists.

The network is developed and coordinated on the European level by the European Cyclists' Federation (ECF), who also own the registered copyrights, in cooperation with **National EuroVelo Coordination Centres**.



*EuroVelo, the European cycle route network 2023*

# REMINDER: EuroVelo Strategy 2030

## EuroVelo Vision

Our vision for EuroVelo is for a fully developed and high quality European cycle route network, which is well-connected to national, regional and local cycle route networks and other sustainable modes of transport, driving further increases in everyday cycling and cycling tourism, in line with ECF's vision to improve and increase cycling across the whole of Europe.

## EuroVelo Mission

Our mission is to promote the further development of a sustainable, strong and well-connected European cycle route network, which

- Acts as an accelerator to increase cycling;
- Drives change in European and national policies and practice;
- Benefits all categories of cyclists, including everyday cyclists, cycling tourists and leisure cyclists;
- Fosters sustainable tourism.



**EuroVelo**  
The European cycle route network

# Strategy 2030 (excerpt)

# What are National EuroVelo Coordination Centres?



# Organisation of EuroVelo

The **network of National EuroVelo Coordination Centres (NECCs)** is vitally important to the success of EuroVelo.

**NECCs** ensure the **implementation, coordination and quality assurance** of EuroVelo at a national level.

In addition, they are responsible for **communicating EuroVelo nationally**, providing accurate and up-to-date information on the sections of EuroVelo routes that pass through their area and ensure the integration of EuroVelo routes into new publications.

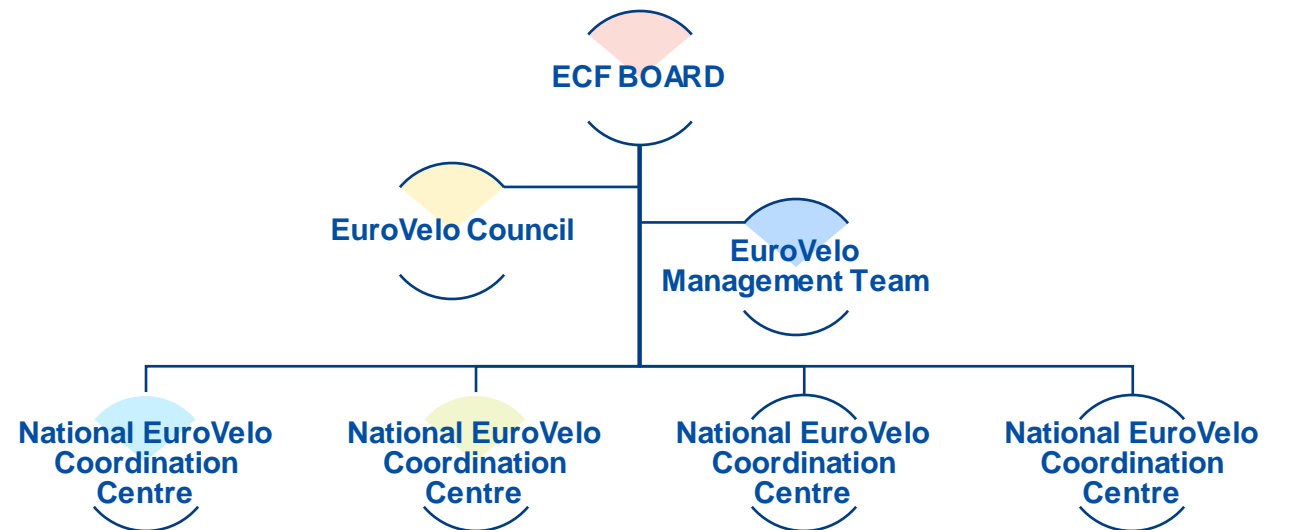
NECCs ensure **sustainable and long-term management of EuroVelo at a national level**, involving relevant national stakeholders and advocating for recognition in all relevant policy areas. They also support the resources of the transnational coordination of EuroVelo delivering an annual fee to ECF.

# Context: EuroVelo Governance

Actors	ECF Executive <i>(including EuroVelo Management Team)</i>	ECF Board	National EuroVelo Coordination Centres (NECCs)	EuroVelo General Meeting (EVGM)	EuroVelo Council (EVC)
Roles	Central coordination of EuroVelo on the European level, in charge of the daily running of EuroVelo	Ultimate decision-making body on strategic EuroVelo matters	Coordination of all aspects of EuroVelo in own geographic area and contribute to ECF's work on the European level	General assembly of the NECCs, held at least once a year, provides inspiration and vision for EuroVelo	Represents NECCs outside of the EVGM, proposes, inspires and advices on EuroVelo matters

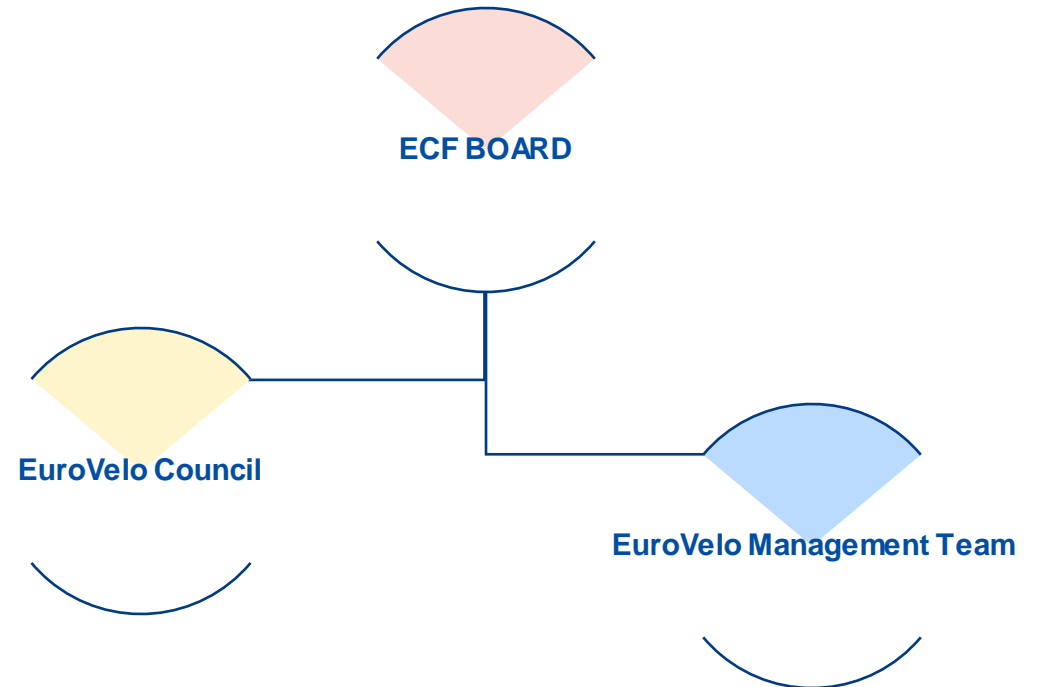


## EuroVelo Governance





## Transnational Coordination





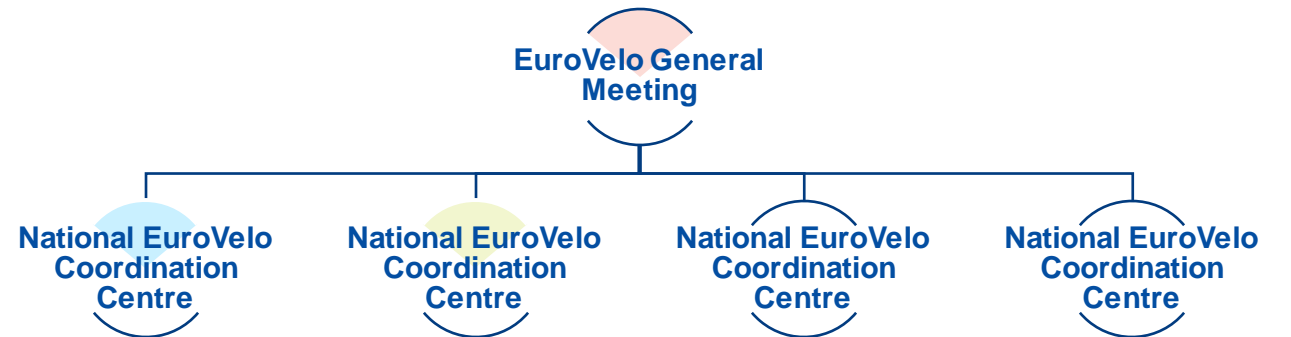
# Transnational Coordination

**Type of activities performed at a transnational level by the EuroVelo Management Team (EVMT) with the support of NECCs and project partners:**

1. **Route infrastructure** (i.e. GIS, manuals, methodologies, European Certification Standard etc.)
2. **Public transport** (i.e. cross-border connections, PT information, European lobbying, manuals)
3. **Services** (i.e. transnational bookable offers, Cycle friendly schemes, best practices collection)
4. **Marketing, promotion and communication** (i.e. EuroVelo.com, social media, press, events)
5. **Usage monitoring and evaluation** (i.e. EuroVelo Data Hub, common methodologies)
6. **Organisation** (i.e. Board, EVC, EVGM, EVMT, Long term management agreements)



## National Coordination



# National Coordination

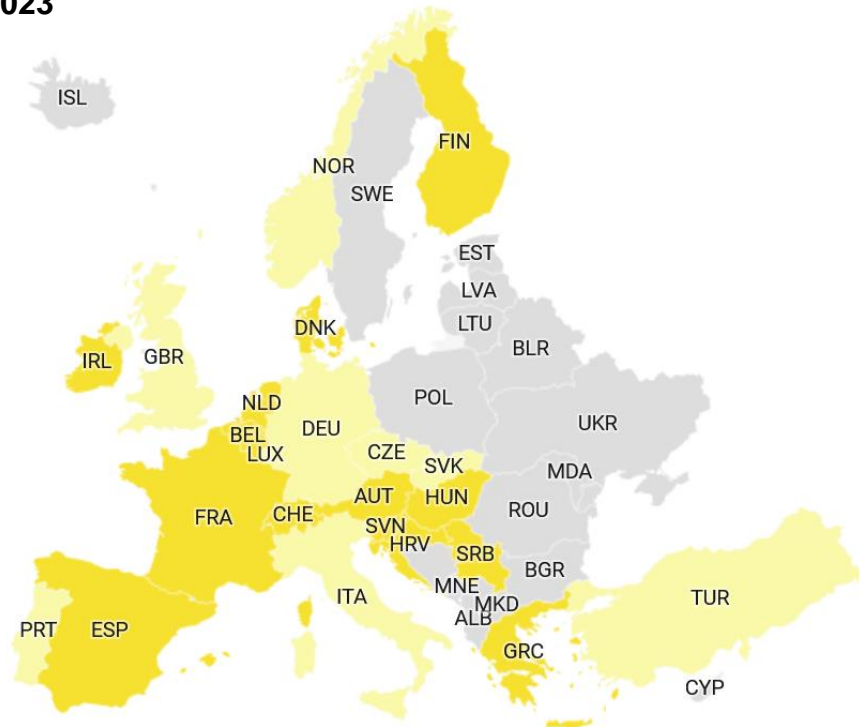
**National EuroVelo Coordination Centres**, coordinated by the **EuroVelo Management Team**, are invited to join the **EuroVelo General Meeting (EVGM)** once a year to take part in the decisions.



# National Coordination

■ National EuroVelo Coordination Centre ■ National EuroVelo Coordinator

2023



## 23 National EuroVelo Coordination Centres

### They coordinate at national level:

- Successful implementation
- Quality assurance
- Communication
- Advocacy to support EuroVelo and cycling tourism

## NECCs' role

Day-to-day management of EuroVelo in their own geographic area.

Contribution to EuroVelo at the European level in cooperation with ECF.

Participation in the EuroVelo governance through the EVGM and EVC.

### Type of activities developed by NECCs:

1. **Development of route infrastructure** (i.e. network and national signage system, GIS collection)
2. **Public transport connections improvement** (i.e. access to the routes, support new offers)
3. **Services** (i.e. cycling friendly scheme, bookable offers)
4. **Marketing, promotion and communication** (i.e. national website, promotion campaigns, branding)
5. **Usage monitoring and evaluation** (i.e. national monitoring, data and figures)
6. **Organisation** (i.e. National EuroVelo Coordination Centre, business model)

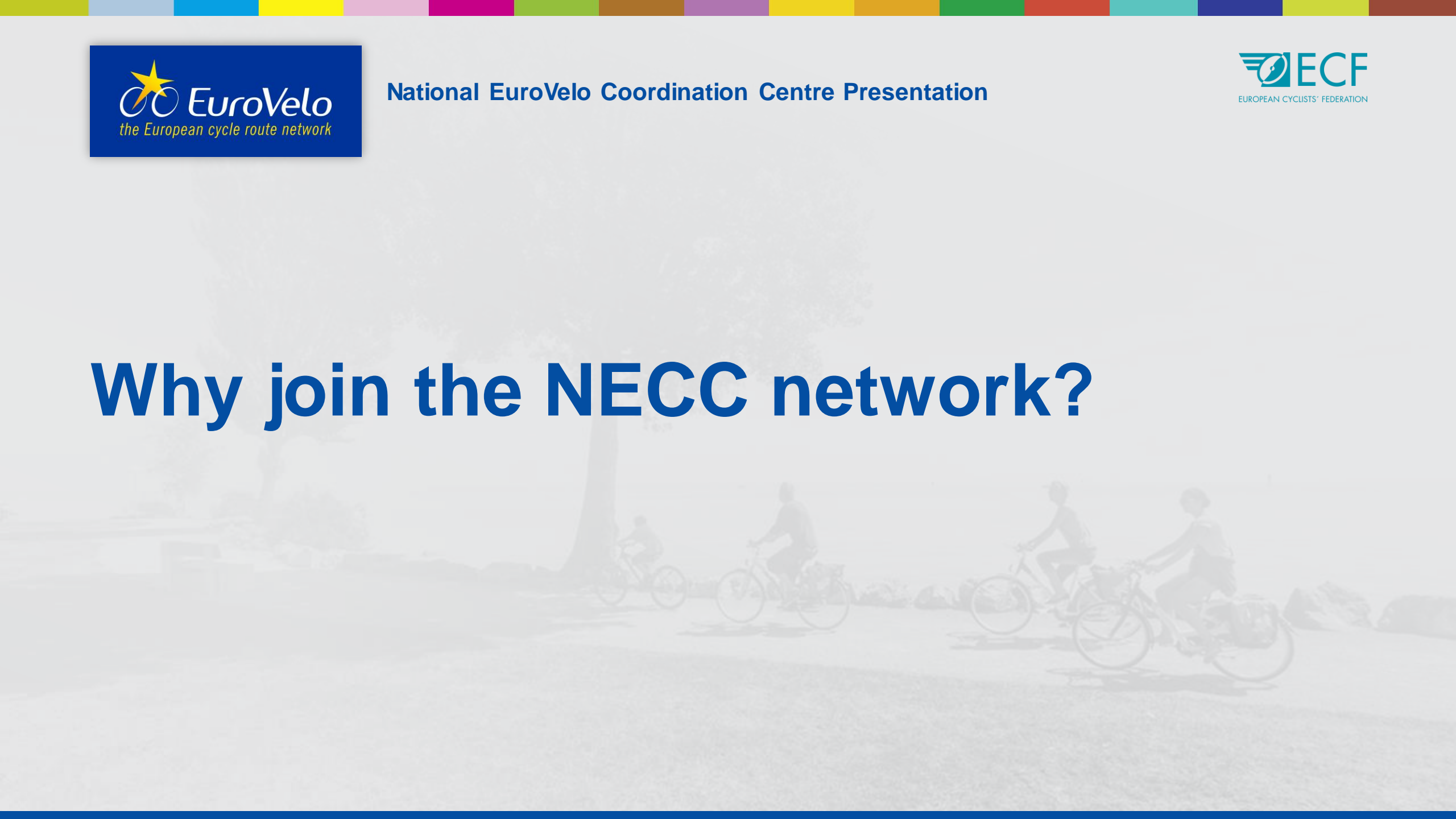
# What are National EuroVelo Coordinators and why upgrading to NECC?

National Coordinators represent **one main stakeholder** supporting EuroVelo at national level. It is recognised as the main partner for EuroVelo by ECF in the country, takes part in the EVGM and pays the annual fee.

Unlike NECC, it does not involve all relevant national stakeholders including decision-making bodies on transport and tourism to ensure the implementation, coordination and communication of EuroVelo at a national level.

All National EuroVelo Coordinators are invited to upgrade as National EuroVelo Coordination Centre. EVMT can support this process (contact [eurovelo@ecf.com](mailto:eurovelo@ecf.com)).

# Why join the NECC network?



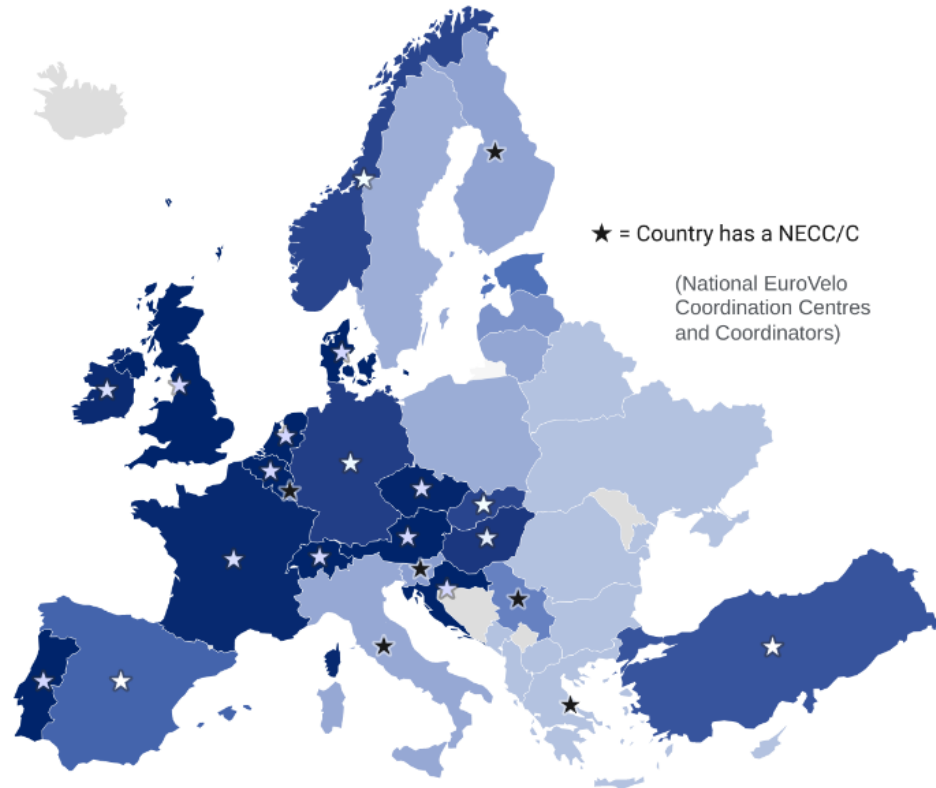
## Why join the NECC network?

- 1) Taking advantage of having a EuroVelo route in the country, a ready-to-use transnational cycling tourism product
- 2) Accelerating and strengthening the development of EuroVelo in the country
- 3) Increase the visibility of cycling tourism in the country
- 4) Joining a strong network to benefit from the experience of others
- 5) Support the transnational coordination of EuroVelo
- 6) Benefiting from the services provided to NECCs
- 7) Positioning the organisation as a central stakeholder for cycling in its own country with higher credibility and legitimacy



## Level of development of EuroVelo routes per country in 2022

% of EuroVelo routes that are developed, developed with signs or certified in the country



**Countries with a NECC have a better level of development of EuroVelo routes on average.**

**[EuroVelo Route Status Report 2022](#)**

## Overview of services provided by ECF to NECCs

What services ECF provides on the central coordination of EuroVelo?	Country with NECC	Country without NECC
<b>Route network:</b> GPX tracks and route network coordination <b>EuroVelo GIS subgroup: expert discussion group on geographical data</b> <b>New EuroVelo routes or major extensions</b>	X X X	X
<b>Services:</b> Cycle friendly schemes best practices Bookable offers on EV.com	X X	X X
<b>Marketing &amp; promotion:</b> Updated EuroVelo.com and social media <b>1000 EuroVelo overview maps + contact on the map</b> <b>EuroVelo &amp; Cycling Tourism Conference</b> <b>EuroVelo Press kit and press requests</b>  <b>EuroVelo brand kit and templates</b>	X X X (free ticket) X (direct requests) X	X X X
<b>Monitoring:</b> EuroVelo Data Hub and expertise on data collection and monitoring European Certification Standard trainings and license	X X (discounts)	X X
<b>Organisation:</b> EuroVelo manuals (on route development, services, marketing, monitoring etc) Advocacy for EuroVelo and cycling tourism <b>EuroVelo General Meeting and networking between NECCs</b> <b>Recognition as main contact on EuroVelo and cycle routes at national level</b> <b>Privileged access to EU funds opportunity</b> <b>Access to exclusive online <u>workshops</u> with experts and knowledge transfer</b> <b>Access to 4 NECC Broadcasts (newsletter) per year with targeted information</b> <b>Expert presentation for national event</b>	X X X (vote) X X X X X (1 free/y)	X X <i>participation</i>      €2,000/pres.

# How to create a National EuroVelo Coordination Centre?



# Present an application to the EuroVelo General Meeting:

- 1) **Inform the EuroVelo Management Team** as soon as possible in the process to benefit from advice and support [eurovelo@ecf.com](mailto:eurovelo@ecf.com)
- 2) Define the proper **organisation at a national level** to represent and foster EuroVelo in a sustainable way (members, organisation, governance, funding etc.)
- 3) Deliver **information on the status of all tasks** under the responsibility of NECC (route coordination, signing coordination, communication and promotion, reporting, network of cycling friendly services, public transport connections, monitoring, networking and lobbying)
- 4) Provide **letters of support** from relevant national stakeholders
- 5) Submit the **application form** at least 2 months before the EVGM to the EVMT [eurovelo@ecf.com](mailto:eurovelo@ecf.com)

## Pay the annual fee:

- In 2023, the annual fee represents 1€ per kilometer of EuroVelo in the country based on EuroVelo Routes Development Status report.
- With a minimum fee of 1,000€/year.

### Examples:

- Germany has the longest network with 9,563 kilometers and has a fee of 9,563€ a year
- Luxembourg has the shortest network with 107 kilometers and has a fee of 1,000€ a year

**EuroVelo Membership fees represent 16% of EuroVelo budget in 2021 and are expected to represent 15% in 2022.**

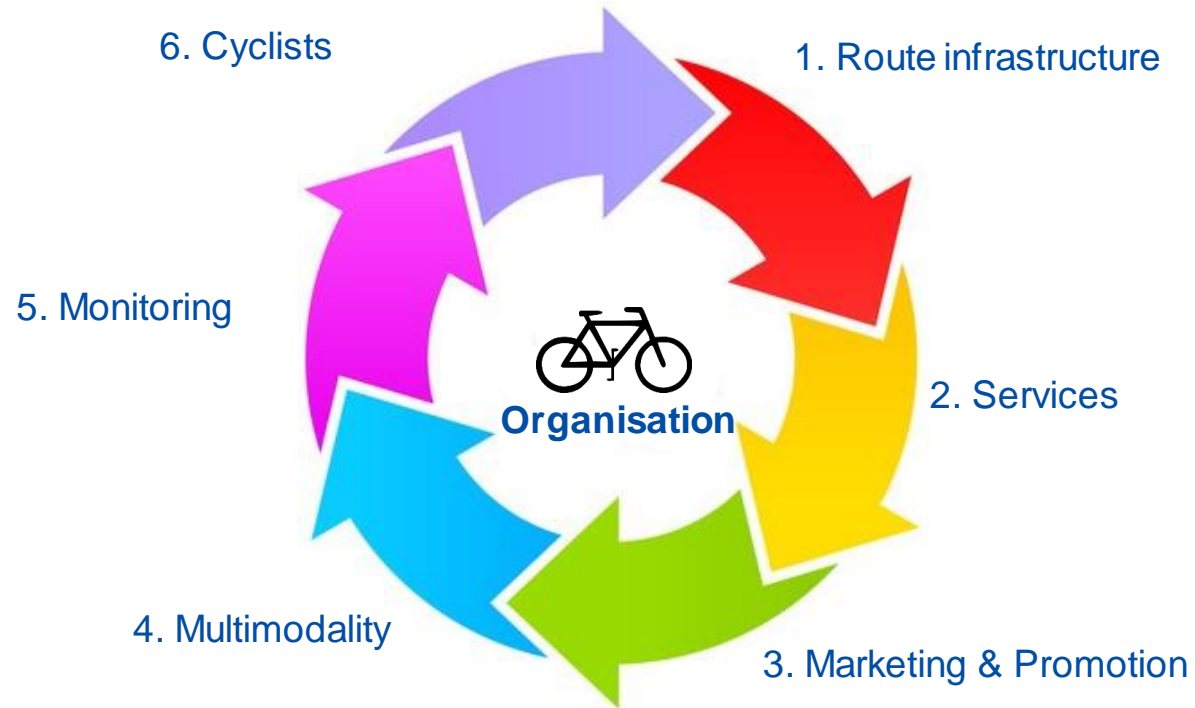
# How will your application be evaluated?

According to the EuroVelo Governance, article 21, “New NECC/C’s are admitted by the EuroVelo General Meeting on recommendation by the EuroVelo Council”.

The EuroVelo General Meeting is the general assembly of the NECCs and is held once a year.

**The EuroVelo Management Team can provide support and advice in all phases of the creation of a NECC. Contact us at [eurovelo@ecf.com](mailto:eurovelo@ecf.com)**

## Final remarks



1. **Several models** on a national level depending on current situation / level of development
2. Recommendation to build **strong national partnership** to support the NECC with one organisation coordinating
3. **Governance drives success** of cycling tourism in Europe
4. One organisation coordinating on the supranational (ECF)

# Thank you!

[eurovelo@ecf.com](mailto:eurovelo@ecf.com)