

HOME COLLECTION

2024



HANDCRAFTED IN FRANCE
HEADPHONES

 **FOCAL**[®]

For more than four decades, Focal has created speaker drivers and high-end loudspeakers that deliver a unique sound. Our brand values are innovation and performance; excellence and pleasure. We are globally renowned for our exclusive technologies. The result of this technological heritage is class-leading products offering a natural, authentic performance, imbued with clarity and power. Our handcrafted headphone collection combines this outstanding listening experience with exquisite, high-quality design, for an all-round luxury sensation.



OPEN-BACK HEADPHONES

Ultimate listening experiences at home

Utopia, Clear Mg and Hadenys are high-fidelity headphones with an open-back design, offering exceptional audio reproduction thanks to their latest generation speaker drivers with no restriction: completely free, the sound is sensational. Their refined finishes and fine materials augment their elegance, enhancing your listening pleasure.



CLOSED-BACK HEADPHONES

Sound immersion

Our engineers have used cutting-edge techniques to bring the best aspects of open-back headphone performance to closed-back design. Stellia and Azurys incorporate speaker drivers capable of working within a limited space, while offering perfect soundproofing and exceptional sound. With them, reveal the intensity of every listening sessions.



ANC HEADPHONES FOR TRAVEL

Travel with Hi-Fi

The Bathys wireless headphones bring you Focal pure sound while you're on the move. Its speaker drivers are made in France, delivering a pure hi-fi sound while its Bluetooth® and Active Noise Cancellation technologies allow you to listen to music without being disturbed by noises around you. This result is achieved thanks to a microphone system which captures ambient sounds and analyses them to produce a reverse frequency, reducing unwanted background noise. This technology is ideal for enjoying your favourite music, a podcast, a film, or answering calls. Take your emotions along for the ride, with Focal headphones for travel.



PASSIVE HEADPHONES

Passive headphones require external amplification and digital/analog converter (DAC), connected to the headphones by a cable (a Jack, for example). The DAC converts the digital signal from the source (streaming or other) into an analog signal. This is then processed by the amplifier, which increases the amplitude of the signal and provides the necessary power for the speaker drivers to faithfully reproduce the sound.

While smartphones/computers have an amplifier built-in, we advise the use of a dedicated headphone amplifier, as Naim Uniti Atom Headphone Edition, to allow the headphones to deliver their full performance.

ACTIVE HEADPHONES

Active headphones incorporate an amplifier and digital/analog converter (DAC) which directly process the sound signal emitted from their wireless audio source (smartphone, tablet, etc.) and amplify it to deliver high-quality sound reproduction. The headphones operate on an internal battery, so all you need to do is ensure that it's charged. "All-in-one", the Bathys active headphones offer freedom of movement and Hi-Fi sound.





01.
UTOPIA

11



02.
STELLIA

17



03.
CLEAR MG

23



04.
HADENYS

29



05.
AZURYS

35



06.
BATHYS

41



07.
UNITI

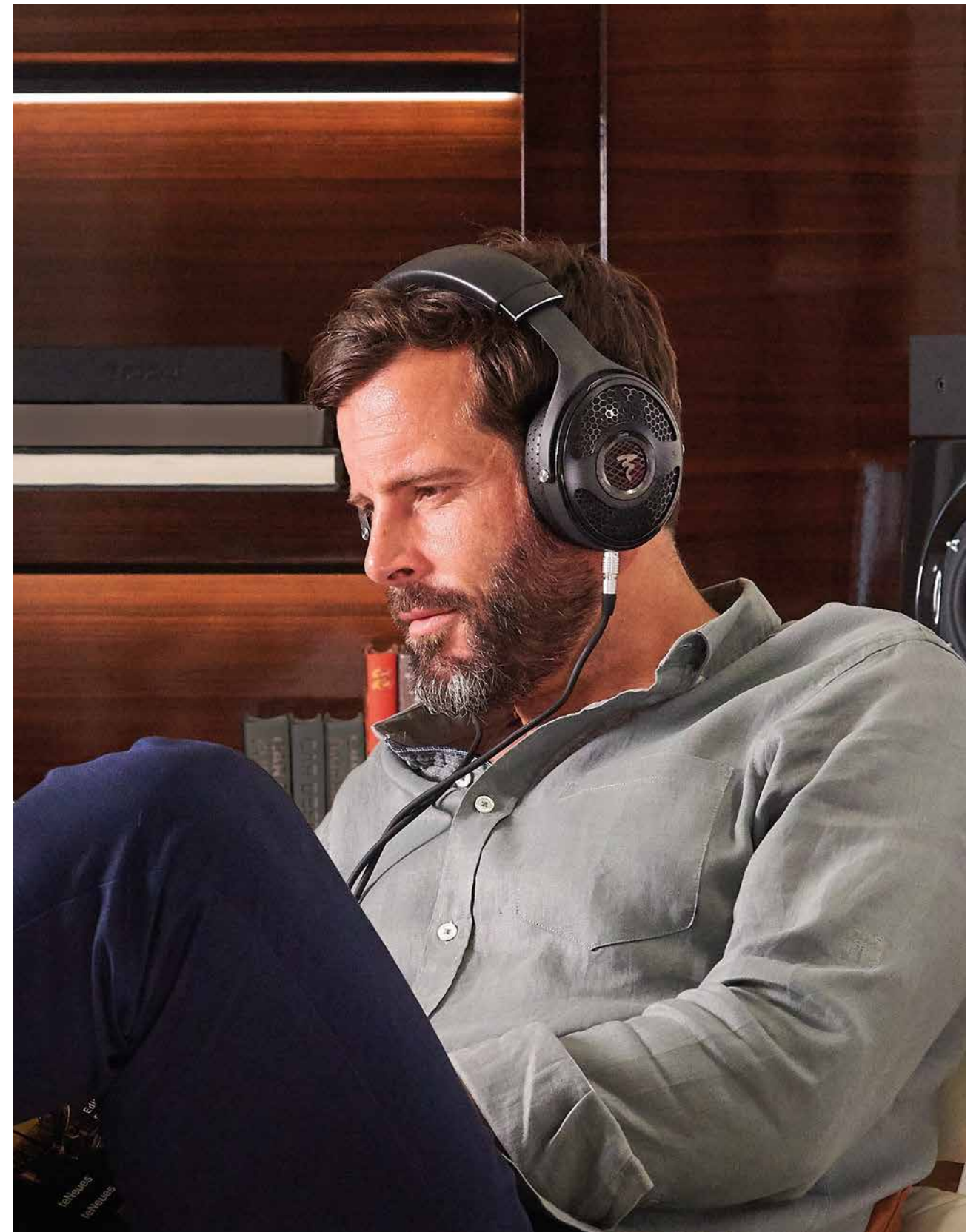
49

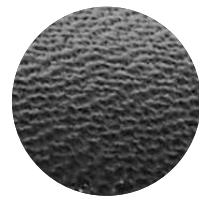
01.

UTOPIA

Pure sound at its finest

Utopia are Focal's flagship headphones. Thanks to their innovative speaker drivers, the listening experience is stunningly realistic. The leather, as well as the woven carbon fibre of the headband, lend an elegant touch to the high-performing, highly comfortable Utopia. The honeycomb grilles and the Black Chrome colour ring highlight subtle details of the design, such as the 'Yin and Yang' on the exterior of the earcup, which represents the perfect harmony between high technology and design.

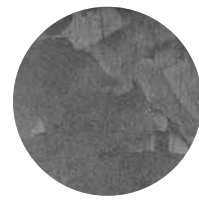




Real leather



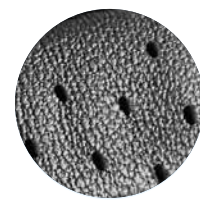
Black Chrome finish



Forged, recycled carbon



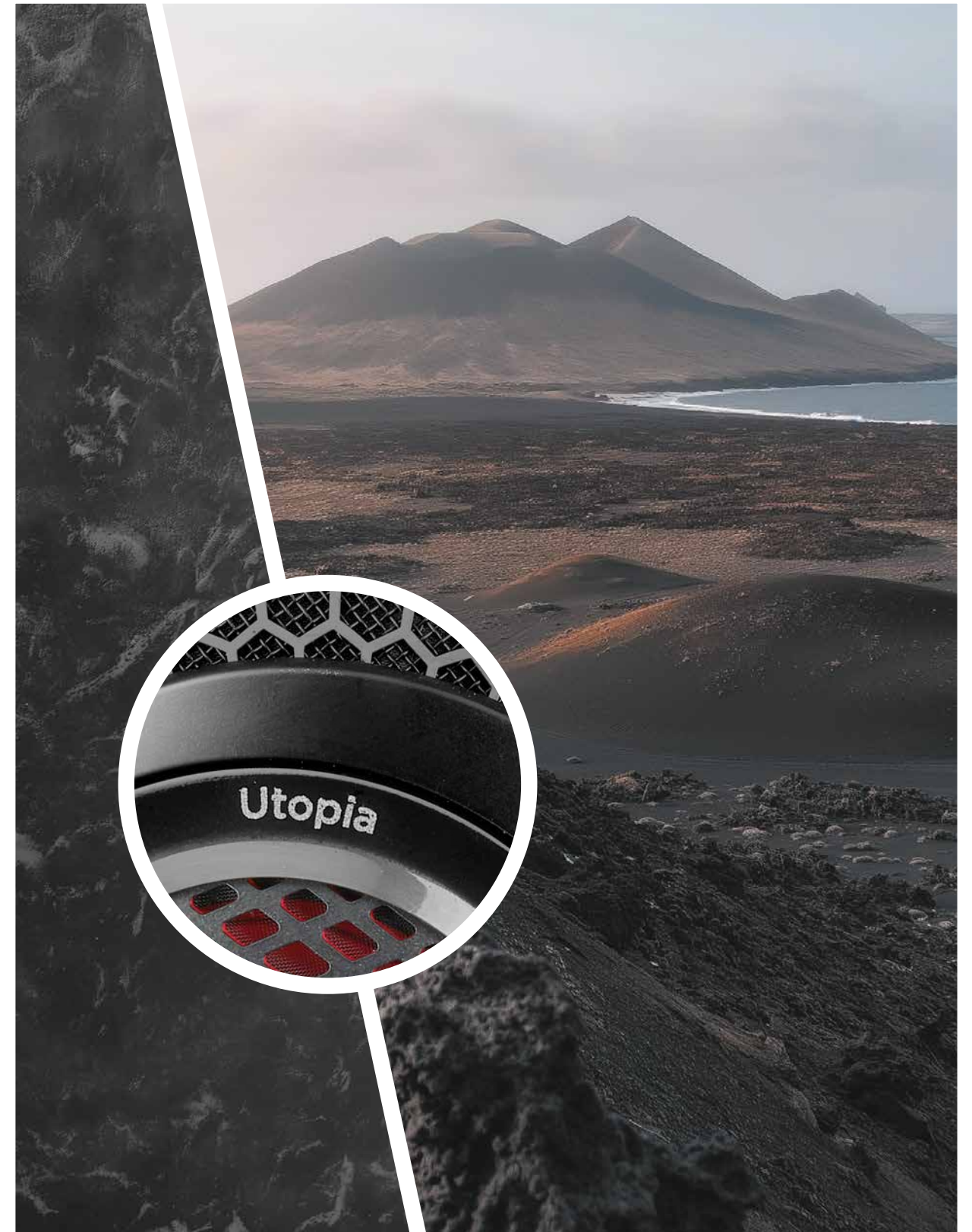
Unrivalled open design



Leather earpads



Woven carrying case





UTOPIA

Over-ear open-back headphones

Impedance	80Ω
Sensitivity	104dB SPL / 1mW @ 1kHz
Frequency response	5Hz - 50kHz
THD	<0.2% @ 1kHz / 100dB SPL
Speaker drivers	1.6" (40mm) pure Beryllium 'M'-shaped dome
Weight	1.08lb (490g)
Cables and connectors	<ul style="list-style-type: none">• 1 x 5ft (1.5m) cable with 1/8" (3.5mm) unbalanced Jack connector & Lemo® connectors• 1 x 9.8ft (3m) balanced 4-pin XLR cable & Lemo® connectors• 1 x Jack adapter 1/8" (3.5mm) female - 1/4" (6.35mm) male
Carrying case	9.8x9.4x4.7" (25x24x12cm)



HANDCRAFTED
IN FRANCE

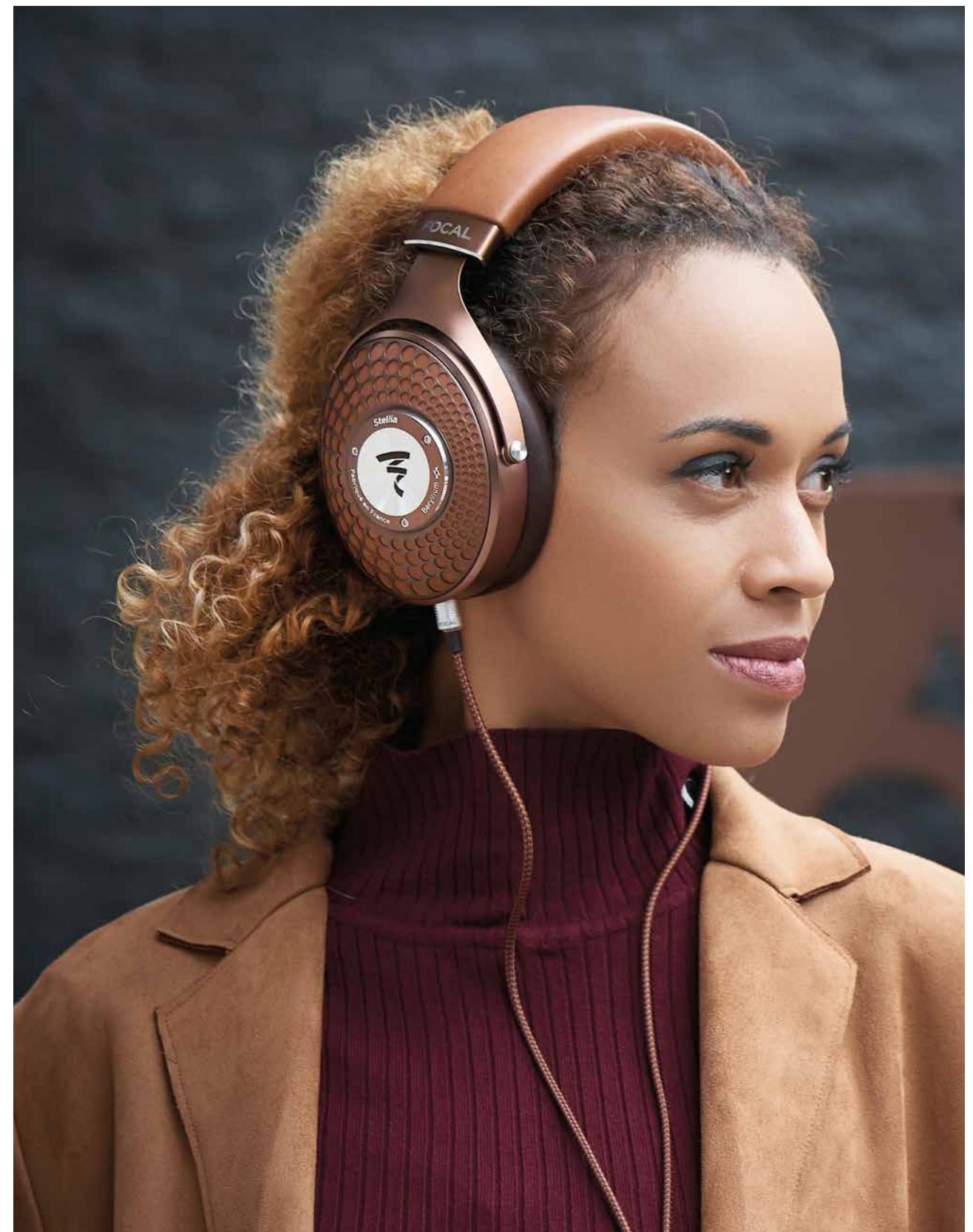


02.

STELLIA

Pure sound everywhere

Each Stellia component is developed in the pursuit of excellence and refinement, down to the full-grain leather of the headband, the beautifully styled earcups and the ultra-comfortable earpads. The full-range driver, with its 'M'-shaped pure beryllium dome, combines an array of Focal innovations - together they deliver an incredible listening experience. Stellia pushes the acoustic boundaries of the very best closed-back headphones and stands out as the reference model in its class.





Full-grain
leather



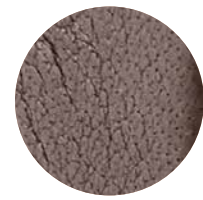
Cognac
finish



Solid
aluminium



Focal
signature



Mocha
finish



Woven
carrying case





STELLIA

Over-ear closed-back headphones

Impedance	35Ω
Sensitivity	106dB SPL / 1mW @ 1kHz
Frequency response	5Hz - 40kHz
THD	0.1% @ 1kHz / 100dB SPL
Speaker drivers	1.6" (40mm) pure Beryllium 'M'-shaped dome
Weight	0.96lb (435g)
Cables and connectors	<ul style="list-style-type: none">• 1 x 4ft (1.2m) cable with 1/8" (3.5mm) unbalanced Jack connector• 1 x 9.8ft (3m) balanced 4-pin XLR cable• 1 x Jack adapter 1/8" (3.5mm) female - 1/4" (6.35mm) male
Carrying case	9.8x9.4x4.7" (25x24x12cm)



HANDCRAFTED
IN FRANCE

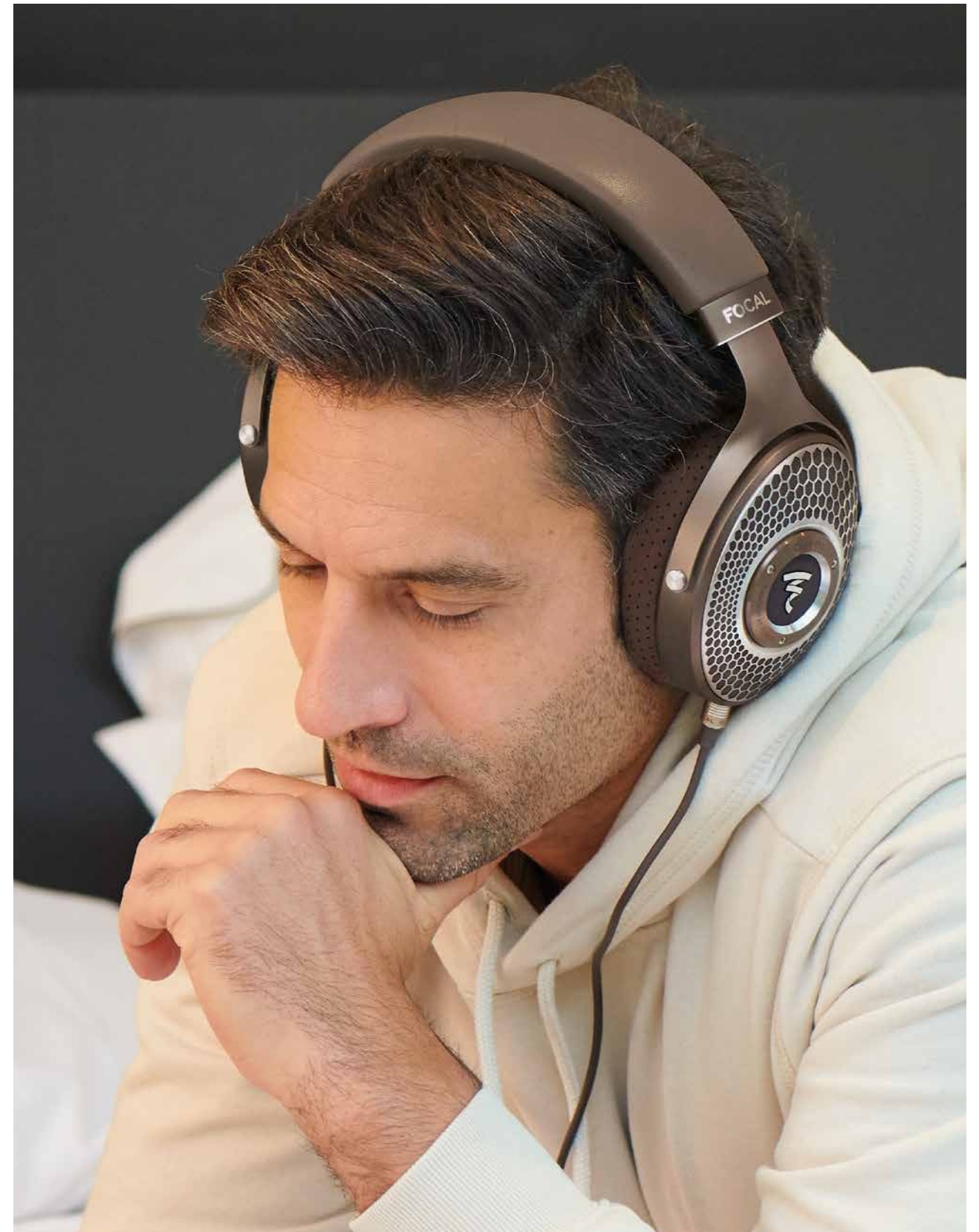


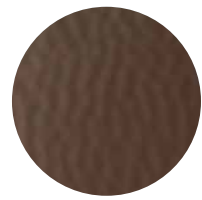
03.

CLEAR MG

Experience excellence

Thanks to their magnesium drivers, fully open at the back, Clear Mg headphones reveal the smallest details of your music with precision and finesse. You'll even forget you're wearing them... The solid aluminium yoke offers pure, seamless design. The exterior of the earcups features a honeycomb pattern for yet more sophisticated elegance, enhanced further by the Chestnut and Mixed-Metals finish, as well as the genuine leather and microfibre earpads.





Semi-aniline leather



Chestnut & Mixed-Metals finish



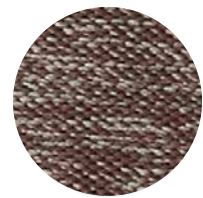
Honeycomb grille



Focal signature



Perforated microfibre



Woven carrying case





CLEAR MG

Over-ear open-back headphones

Impedance	55Ω
Sensitivity	104dB SPL / 1mW @ 1kHz
Frequency response	5Hz - 28kHz
THD	0.25% @ 1kHz / 100dB SPL
Speaker drivers	1.6" (40mm) 'M'-shaped Magnesium dome
Weight	0.99lbs (450g)
Cables and connectors	<ul style="list-style-type: none">• 1 x 3.9ft (1.2m) cable with 1/8" (3.5mm) unbalanced Jack connector• 1 x 9.8ft (3m) balanced 4-pin XLR cable• 1 x Jack adapter 1/8" (3.5mm) female - 1/4" (6.35mm) male
Carrying case	9.8x9.4x4.7" (25x24x12cm)



HANDCRAFTED
IN FRANCE

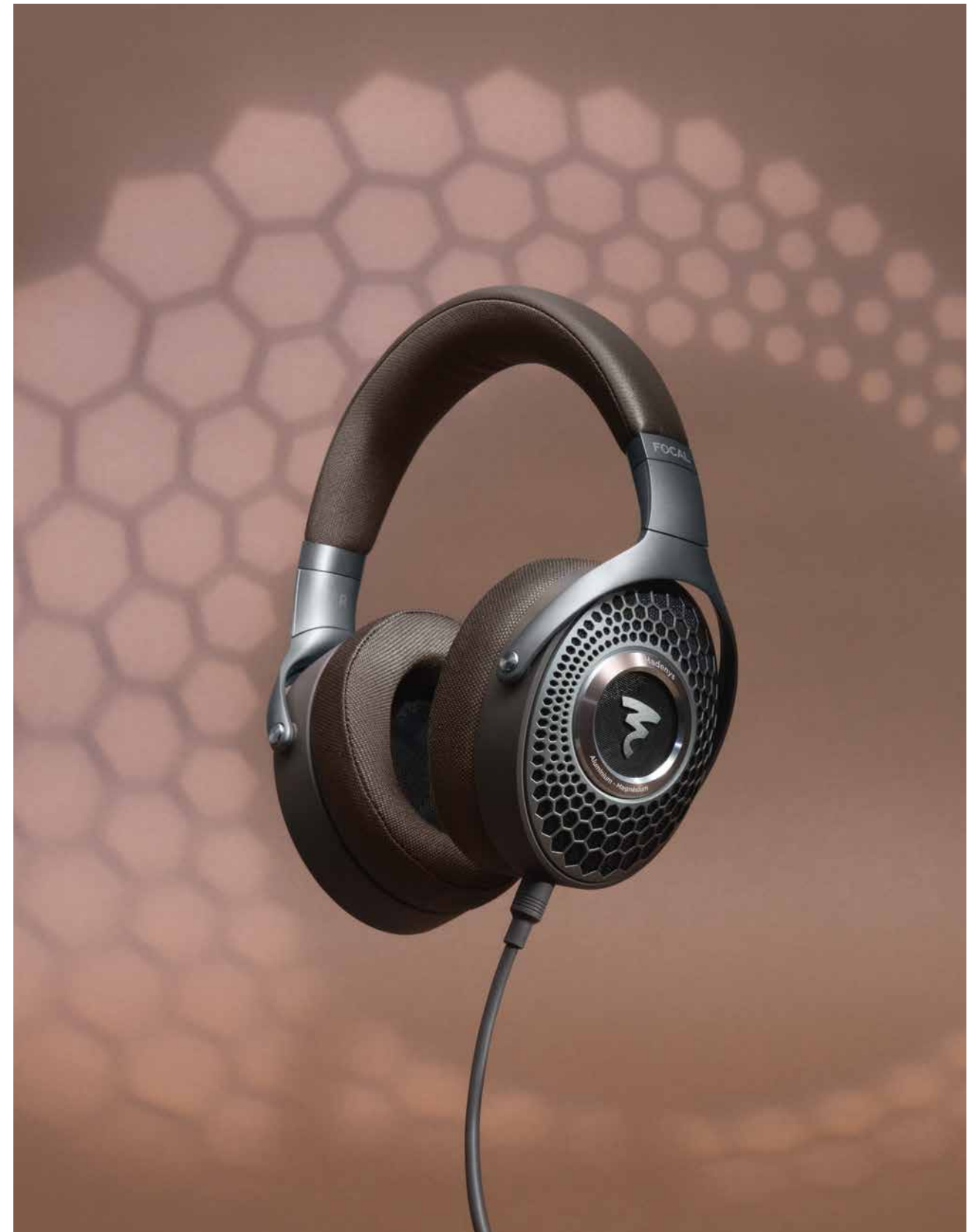


04.

HADENYS

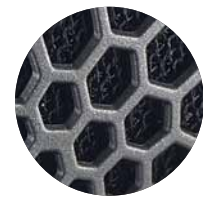
From the origins of sound

Passive open-back headphones, Hadenys are known for their exceptional aesthetics, performance, and rich nuances. They incorporate sophisticated materials such as genuine leather, magnesium and aluminium that guarantee lightness, robustness, comfort and a great fit. Equipped with Focal's patented 'M'-shaped dome speaker drivers, they reproduce a warm and dynamic sound, for pure listening at home.





Real leather



Honeycomb grille



Light magnesium yoke



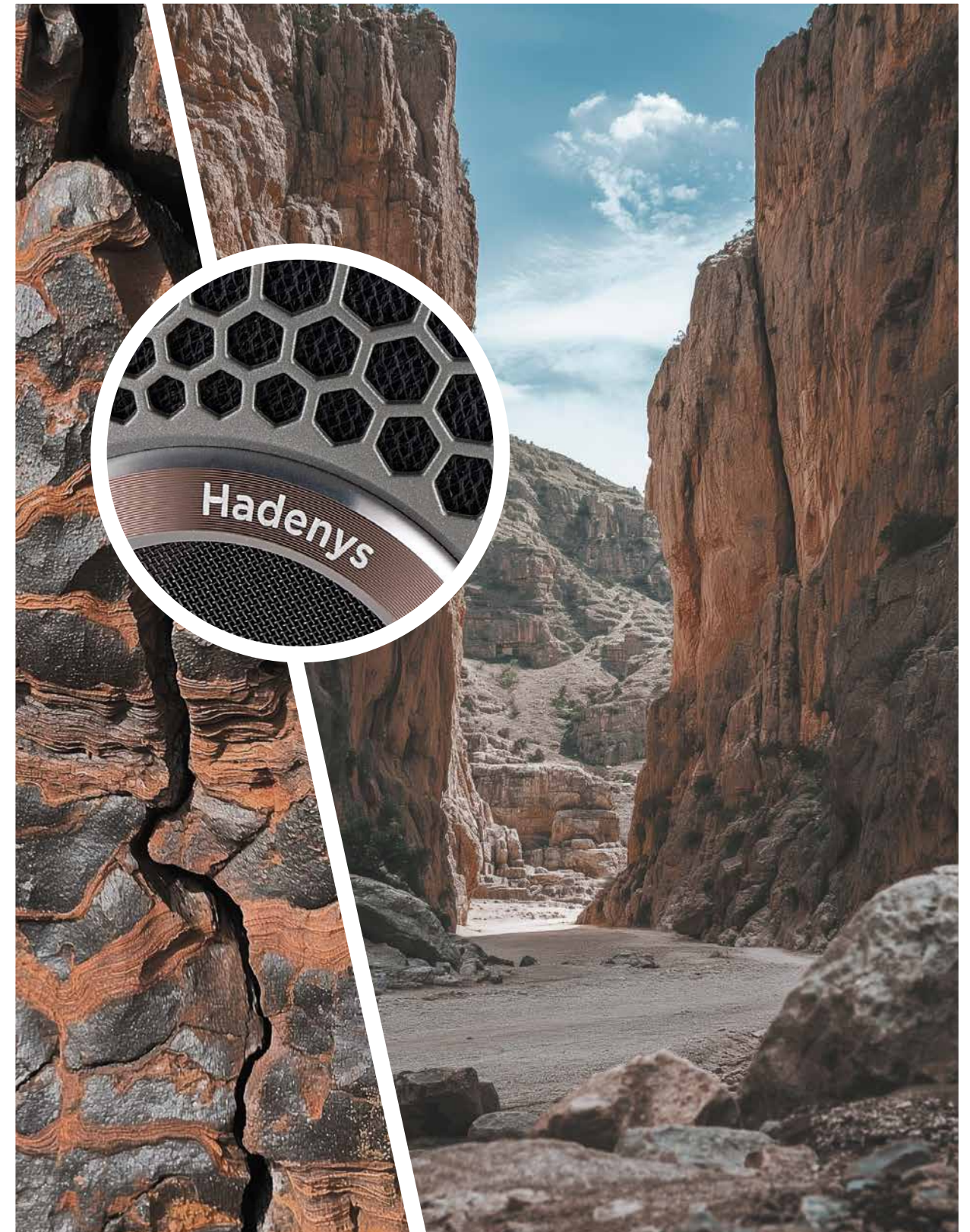
Woven textile



Solid aluminium



Denim effect carrying case





HADENYS

Over-ear open-back headphones

Impedance	26Ω
Sensitivity	100dB SPL / 1mW @ 1 kHz
Frequency response	25Hz - 22kHz
THD	0.2 % @ 1kHz / 100dB SPL
Speaker drivers	1.6" (40mm) 'M'-shaped Aluminium-Magnesium dome
Weight	0.65lbs (294g)
Cables and connectors	<ul style="list-style-type: none">• 6ft (1.8m) mini-jack cable,• 1/4" (6.3mm) jack adapter
Carrying case	9.4x8.3x2.7" (24x21x7cm)

HANDCRAFTED
IN FRANCE

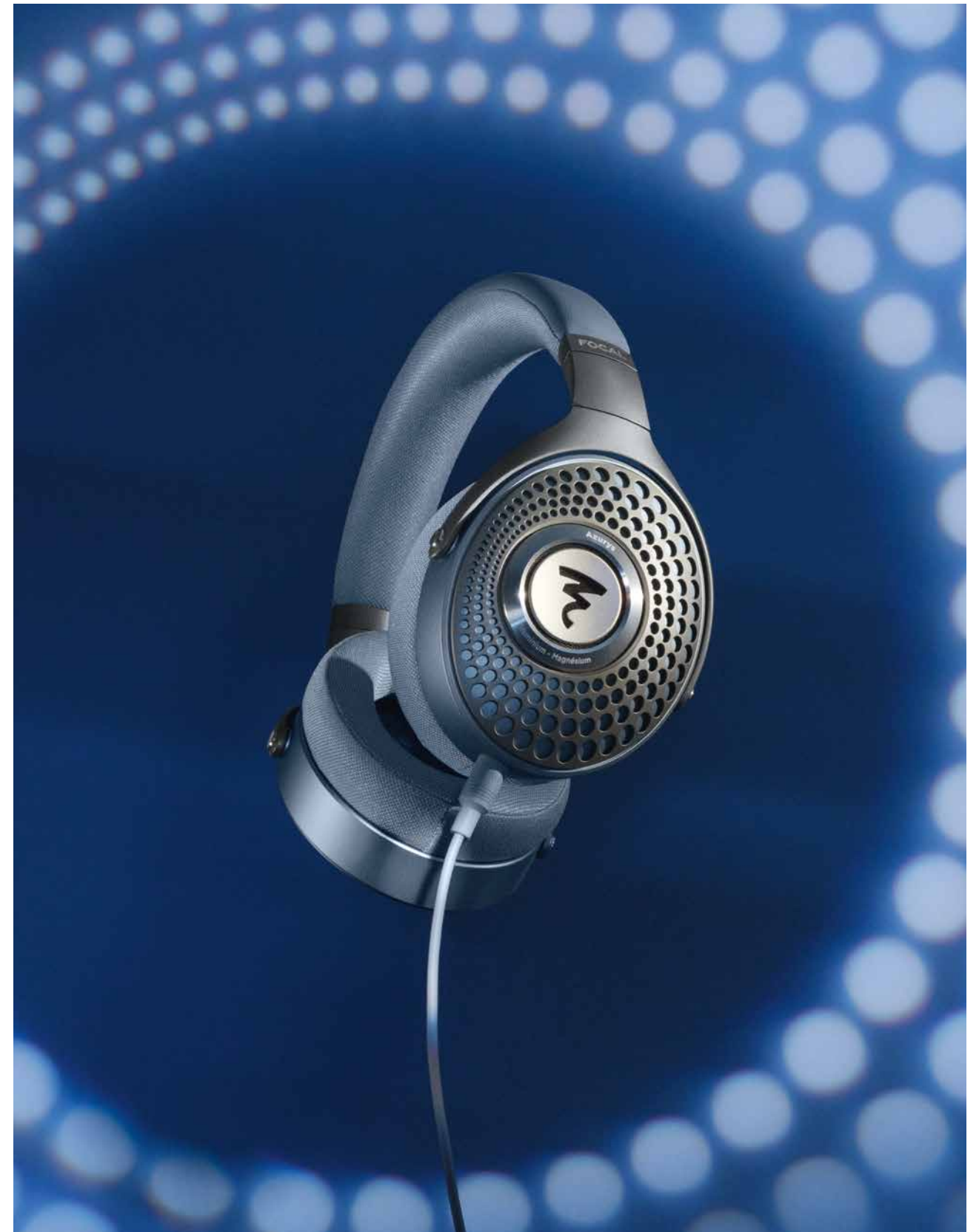


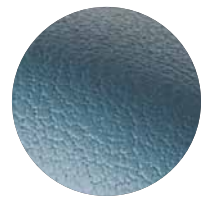
05.

AZURYS

All the sound colours

Suitable for use at home or on the go, Azurys are wired passive closed-back headphones that are as refined as they are high-performance. With 'M'-shaped dome speaker drivers, a magnesium yoke, a headband made of leather and woven fabric, and a unique blue colour, these headphones are the perfect blend of sound technology, quality materials, comfort, and style, making it easy to enjoy Focal high-fidelity sound in any setting.

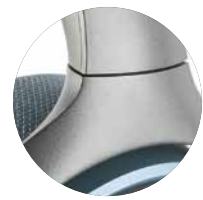




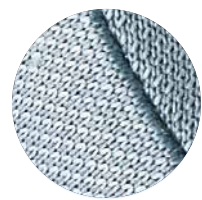
Real leather



Metallic finish



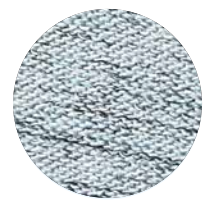
Light magnesium yoke



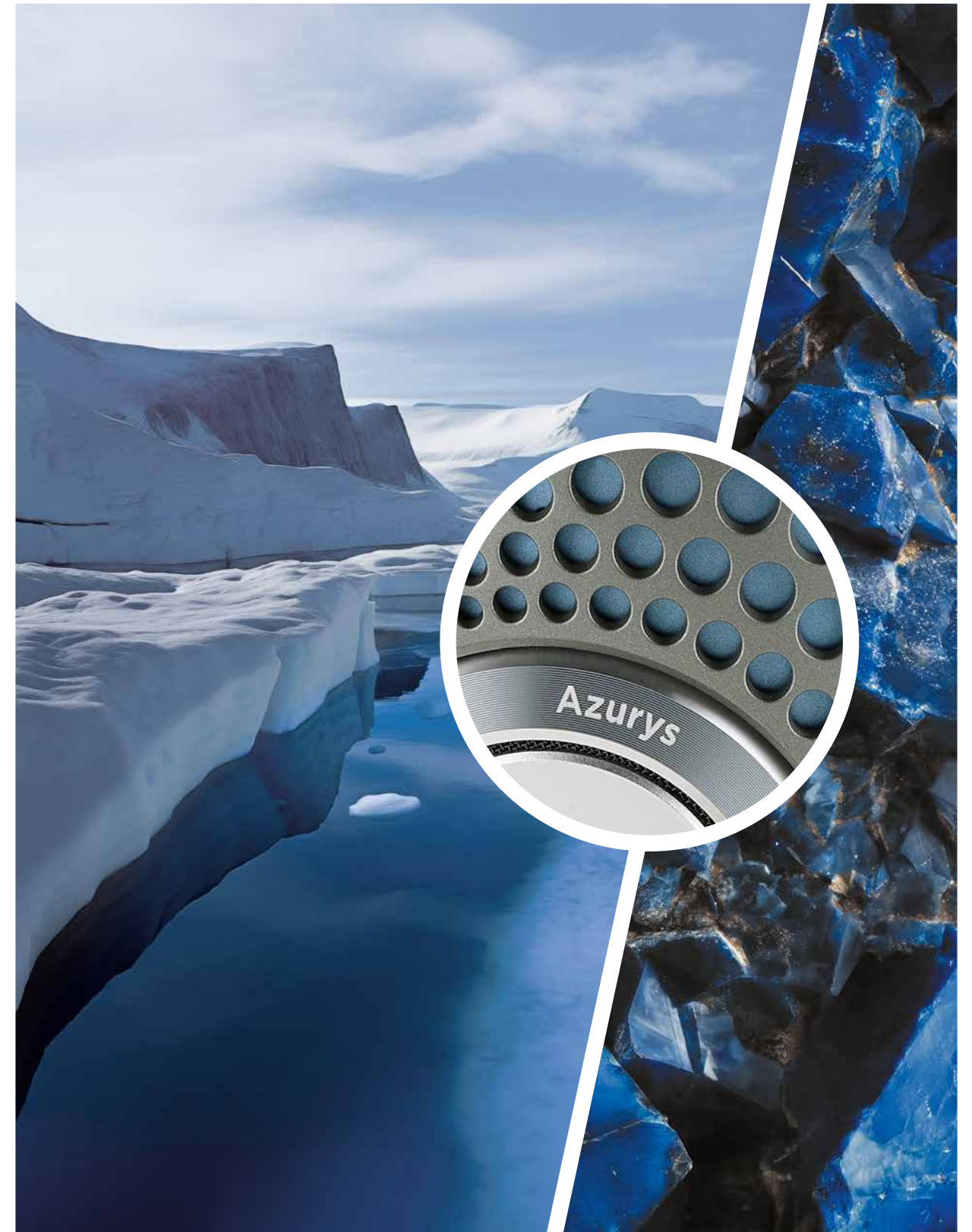
Woven textile



Solid aluminium



Knitted carrying case





AZURYS

Over-ear closed-back headphones

Impedance	26Ω
Sensitivity	100dB SPL / 1mW @ 1 kHz
Frequency response	15Hz - 22kHz
THD	0.3% @ 1kHz / 100dB SPL
Speaker drivers	1.6" (40mm) 'M'-shaped Aluminium-Magnesium dome
Weight	0.67lbs (306g)
Cables and connectors	4ft (1.25m) mini-jack cable with remote control and microphone
Carrying case	9.4x8.3x2.7" (24x21x7cm)



HANDCRAFTED
IN FRANCE



06.

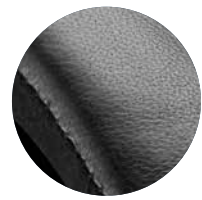
BATHYS

Travel with High-Fidelity

Bathys, the wireless headphones with Active Noise Cancellation are the perfect travel companion. In addition to offering perfect soundproofing from your surroundings, they deliver a pure Hi-Fi sound thanks to Focal's, made in France, speaker drivers and to the integrated USB-DAC mode offering a resolution of up to 24 bits/192kHz. Comfortable and refined, Bathys features numerous functionalities as well as easy-to-access control buttons for a very simple Bluetooth® use.







Real leather



Metallic finish



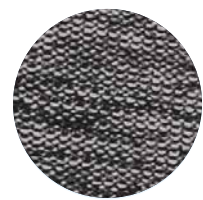
Light magnesium yoke



Backlit logo



Solid aluminium



Woven carrying case





BATHYS

Closed-back wireless headphones
with active noise cancelling

Bluetooth®	5.1 Multipoint ; range > 15m
Audio codecs	SBC, AAC, aptX™ Adaptive, aptX™
Autonomy	30h Bluetooth® Noise Cancelling 35h Jack mode 42h USB DAC mode
Voice assistants	Google Assistant, Amazon Alexa
Microphones	8
Control application	Focal & Naim, iOS and Android compatible
Frequency response	15Hz - 22kHz
THD	<0.2 % @ 1kHz / 100dB SPL
Connections	Bluetooth® / Jack 3.5mm / USB-C®
Speaker drivers	1.6" (40mm) Aluminium/Magnesium 'M'-shaped dome, Made in France
Weight	0.77lb (350g)
Cables and connectors	• 1 x 4ft (1.2m) cable with 1/8" (3.5 mm) Jack connector • 1 x 4ft (1.2m) USB-C® cable
Carrying case	9.5x8.3x2.8" (24x21x7cm)
Finishes	Black Silver or Dune

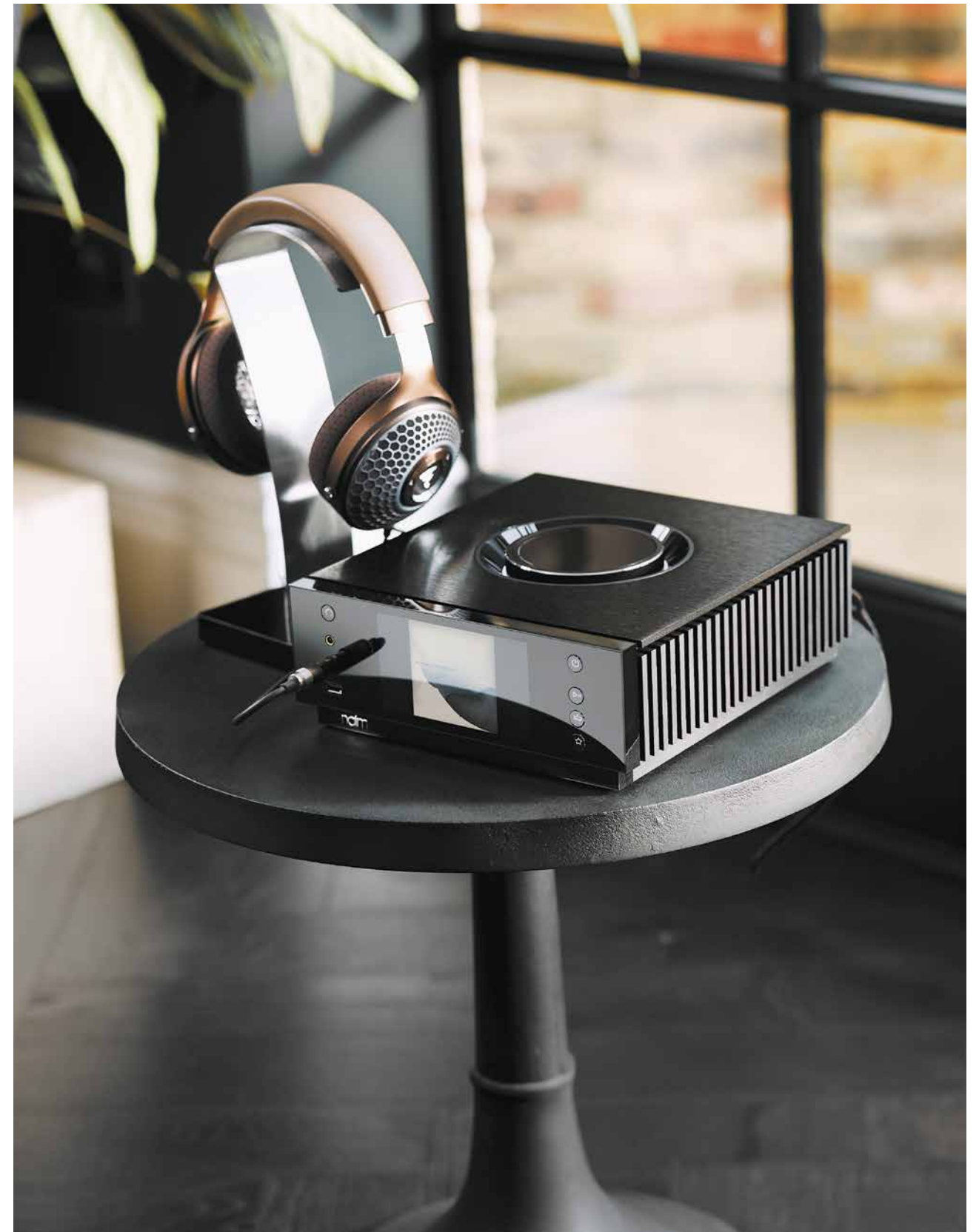


07.

UNITI ATOM

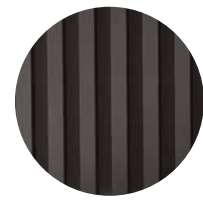
Headphone Edition

Built-to-last in Britain in the Naim workshops, Uniti Atom Headphone Edition is designed to be the ultimate solo listening source at home. This innovative all-in-one system combines beautiful design with stunning functionalities and all the streaming features you need (Qobuz, TIDAL, Spotify®). Simply connect it to your wi-fi, plug in your favourite headphones and escape into a world of superior-quality music streaming, radio, podcasts and more.





Sleek volume wheel



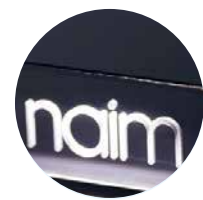
High performance transformer



32bits/384kHz resolution



Multiple streaming services



All-in-one system



Digital and analogue inputs





UNITI ATOM

Headphone Edition

Type	Streaming headphone amplifier	
Audio inputs	Digital	2 x Optical S/PDIF up to 96kHz, Coaxial RCA (up to 24bit/192kHz, DoP 64Fs)
	Analogue	1 x Stereo RCA pair
	USB	2 x USB 2.0 (Type A connector)
	Streaming	Apple AirPlay 2, Chromecast Built-in, UPnP™, Spotify® Connect, TIDAL, Roon Ready, Bluetooth®, Internet Radio, Qobuz
Headphone outputs	4.4mm Pentaconn (balanced) 4 pin XLR (balanced) 6.35mm (¼ inch) jack (unbalanced) 1.5W RMS per channel into 16ohms Suitable for headphones from 16Ω and upwards	
Audio outputs	Balanced XLR Preamp output RCA Preamp output Multiroom: Sync up to five Naim Streaming products and control via the Focal & Naim App	
Power	17W (typical use)	
Dimensions (HxWxD)	3.74x9.65x10.43" (9.5x24.5x26.5cm)	
Weight	15.4lbs (7kg)	



ACCESSORY

Headphones stand

Specifically designed for Focal headphones, this stainless steel stand is also available as part of our collection. Its stylish shape, reminiscent of the Focal flame logo, provides a simple, aesthetic storage solution for your headphones, while the sleek design is finished with laser engraving. Thanks to its Setapan® base, it ensures perfect stability.





UTOPIA



'Probably the best electrodynamic headphones ever created'

ON MAG



'I consider this headphone a masterpiece'

HIFI +

'It is, realistically, the best headphone on the planet right now'

AV FORUMS



CLEAR MG



'Everything about the Focal Clear Mg is close to perfect'

FORBES



'Clear Mg is masterful. Focal's promise of excellence is warranted'

HI-FI TRENDS



STELLIA



'They are a slam dunk.'

THE ABSOLUTE SOUND



'Simply the best closed-back headphones we've heard'

WHAT HI-FI



BATHYS



'Focal's first wireless over-ear headphones are a complete success - and a good-looking success at that'

T3

'Sound performance above everything'

LES NUMÉRIQUES



'A dive into an audiophile bubble made in France'

ON MAG

'The Focal Bathys are the world's best-sounding wireless headphones'

WHAT HI-FI



UNITI



'Naim's new Uniti Atom Headphone Edition is just perfect for private listening'

FORBES



'Luxury-tier quality in hardware, design and sound, built to keep pace with the best headphones made today'

AUDIOHOLICS

'You really get the Naim sound, now delivered straight to your ears'

HI-FI.NL

COLLECTIONS

Combining performance and design, our collections are a revelation, awakening emotions. And it doesn't matter where you are. At home with loudspeakers dedicated for indoor, outdoor or integrated use, Home Cinema systems and open-/closed-back headphones; on the go with in-car kits; during travel with Bluetooth® Noise Cancelling Headphones; in studios with monitors and at sea with specialist yacht solutions.



Home Collection



Motorities Collection



Professional Collection

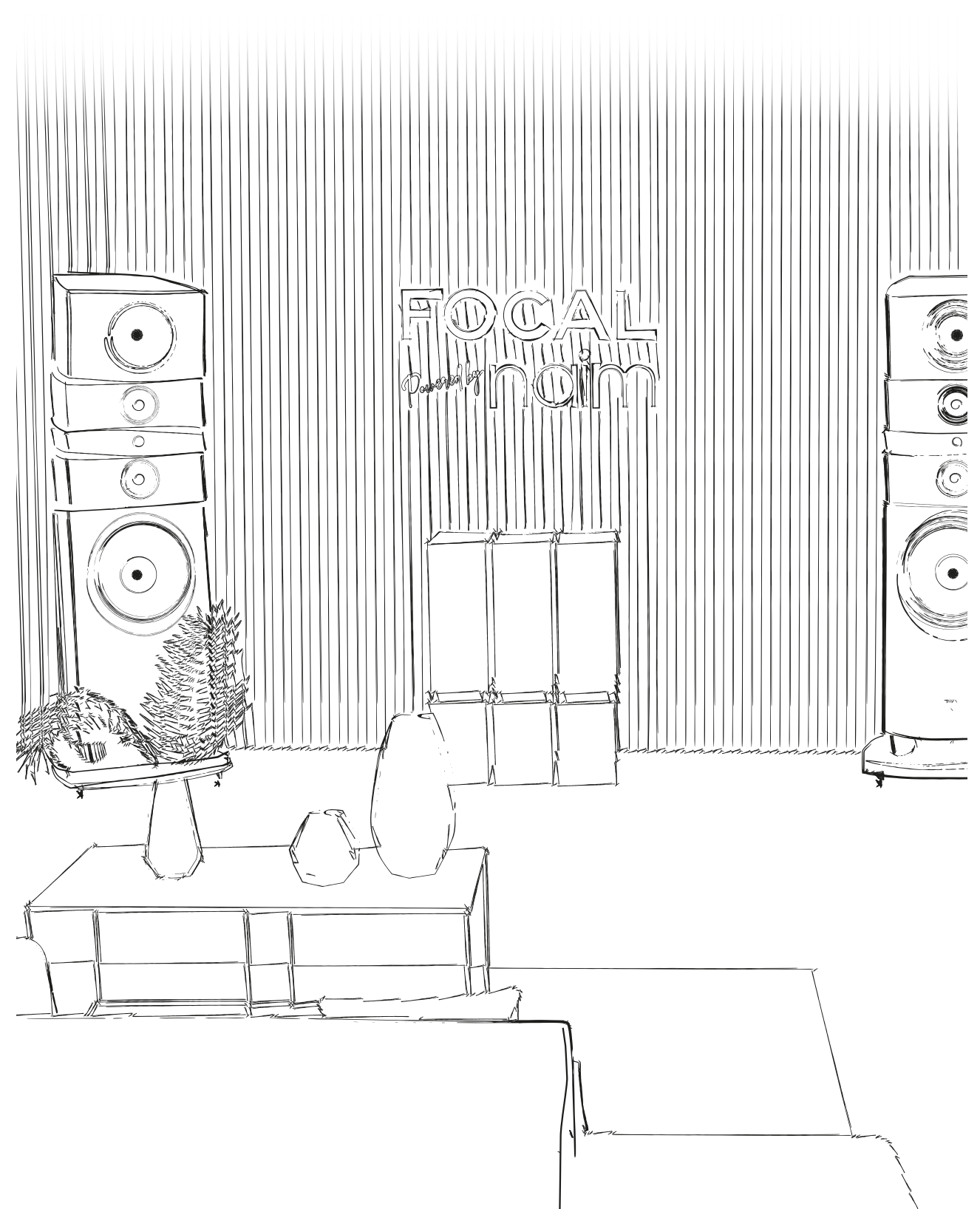
FOCAL *Powered by* naim

Enjoy an incredible sound experience

Find our products in 10,000 retail partner stores across the world, but also in our Focal Powered by Naim shops. These stores, dedicated to our brands, invite you to dive into our world, our savoir-faire and immerse yourself in the Focal & Naim sound.



www.focalpoweredbynaim.com





For more information, scan the QR code
or find us at:

www.focal.com



Focal JMLab

BP 374 - 108, rue de l'Avenir - 42353 La Talaudière cedex - France - +33 (0) 477 435 700

Focal® is a registered trademark of Focal JMLab, Naim® is a registered trademark of Naim Audio.
For further improvement or to reflect legal or regulatory developments, Focal JMLab and Naim Audio Limited reserve the right to modify the technical specifications of their products without notice. If need be, the images shown are for illustrative purposes only and may vary from the product sold.
Pictures : L'Atelier Sylvain Madelon / p.29;35;41;43: Sylvie Bessou / Envato Elements. SCAA/29/03/2024 - v4
Paper: sourced from sustainably managed forests. Printing: DEUX-PONTS Manufacture d'Histoires - France

