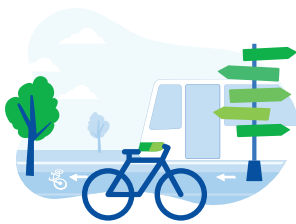




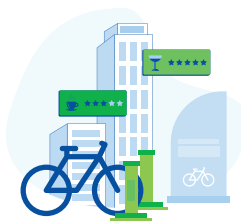
Assess the quality of cycling routes

with the European Certification Standard (ECS) methodology



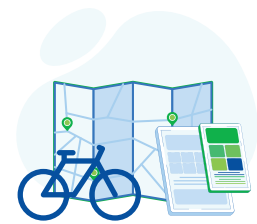
INFRASTRUCTURE

including continuity, safety, surface and width, attractiveness, signing, public transport connections



SERVICES

including accommodation, food, drink and rest areas, bike services, bookable offers



COMMUNICATIONS

including web and print communications, information along the route



SCAN TO

LEARN MORE



WHAT IS THE EUROPEAN CERTIFICATION STANDARD (ECS)?

A unique and comprehensive methodology designed to assess the quality of EuroVelo and other cycle routes.

22,000+
km of cycle routes surveyed

10+
Route inspector trainings held by ECF since 2015

200+
ECS route inspectors all around Europe

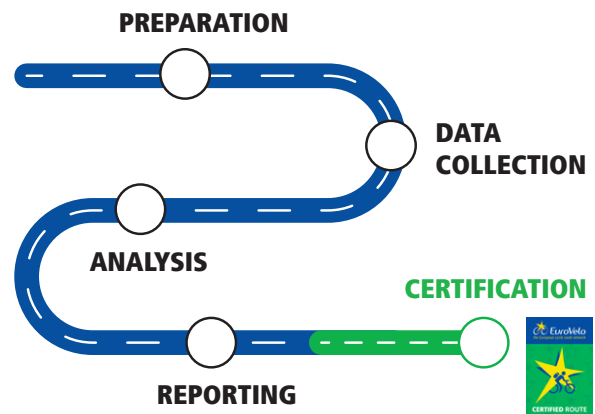
1 certified route in 2022
EuroVelo 15 - Rhine Cycle Route

HOW DOES ECS WORK?

ECS is a successful methodology for route surveying, which consists of collecting data on infrastructure, services and communications using the dedicated ECS app. The survey enables a comprehensive assessment of the quality of cycle routes, and helps stakeholders to understand development needs and plan further investments. It also generates useful information for the end users.

When applied to EuroVelo routes, if the correct set of criteria are met, ECS can lead to routes becoming fully certified. "Certification" is the highest quality level on the EuroVelo network. Once achieved, certification is valid for five years.

Steps of the survey



HOW TO USE ECS?

Every year, ECF organises trainings for individuals to become EuroVelo Route Inspectors. Only these trained Inspectors can apply the ECS methodology.

Surveying of the route is performed with the ECS app, which requires the purchase of a three-year licence directly from ECF.

WHAT RESULTS?

1. Detailed GIS data about a cycle route (useful for quality communications).
2. Identification of improvement needs and an action plan with investment priorities.
3. Required for EuroVelo Certification label.

WHO CAN USE ECS?

Cycle route managers, infrastructure authorities, EU funded projects and other relevant stakeholders.

For more information, contact eurovelo@ecf.com

**SCAN TO
LEARN MORE**

