



ST. KITTS AND NEVIS

Region: Latin America and Caribbean
Income Category: High Income



Human capital – knowledge, skills, and good health – empowers people to achieve their potential and drives economic growth. This brief tracks progress by St. Kitts and Nevis in building and using human capital. This page presents the Human Capital Index (HCI), its components parts, and relevant benchmarks. The HCI quantifies how underinvestment in education and health for today's children reduces future incomes. Data are the most recently available as of 2020. The back page presents a set of Human Capital Complementary Indicators (HCCI) that shows progress at each stage of the lifecycle.

THE HUMAN CAPITAL INDEX

A child born in St. Kitts and Nevis will be **59%** as productive when she grows up as she could be if she enjoyed complete education and full health.

This is higher than the average for the Latin America & Caribbean region (56%) but lower than for High Income countries (71%).

THE HUMAN CAPITAL INDEX COMPONENTS

- **Probability of Survival to Age 5.** Of every 100 children born in St. Kitts and Nevis, **99** survive to age 5.
- **Expected Years of School.** In St. Kitts and Nevis, a child who starts school at age 4 can expect to complete **13** years of school by her 18th birthday.
- **Learning-Adjusted Years of School.** Factoring in what children actually learn, expected years of school is **8.5** years.
- **Average Harmonized Test Scores.** Students in St. Kitts and Nevis score **409** on a scale where 625 represents advanced attainment and 300 represents minimum attainment.
- **Adult Survival Rate.** Across St. Kitts and Nevis, **88%** of 15-year-olds survive until age 60.
- **Fraction of Children Under 5 Not Stunted.** Internationally comparable data on stunting are not available for St. Kitts and Nevis.

UTILIZATION-ADJUSTED HUMAN CAPITAL INDEX

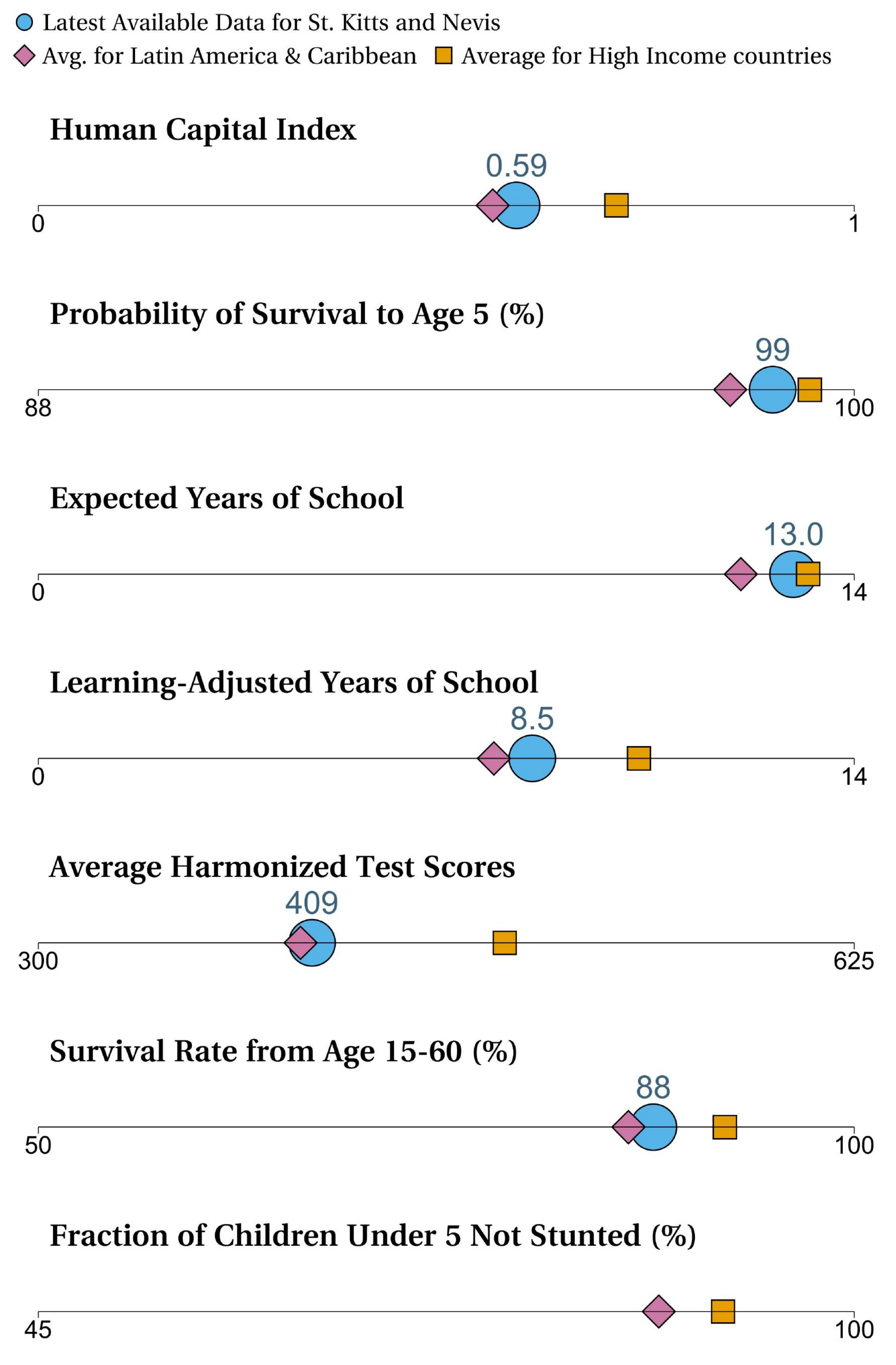
The Utilization-adjusted Human Capital Index (U-HCI) scales down the HCI by taking into account how many adults are not employed. The data on the utilization-adjusted human capital index are not available for St. Kitts and Nevis. The regional average for this indicator is **0.36** and the income group average is **0.51**.

Gender differences in Human Capital and Utilization

	Boys	Girls	Overall
Human Capital Index	0.57	0.60	0.59
Utilization-Adjusted HCI	-	-	-

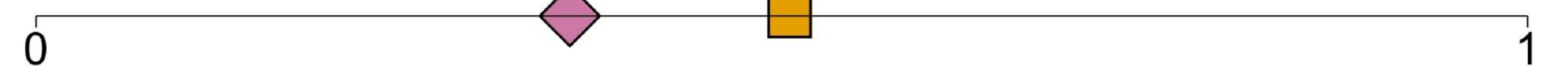
Note: - represents no internationally comparable data available.

HCI AND COMPONENTS



U-HCI

Utilization-Adjusted Human Capital Index



Note: Missing symbols indicate internationally comparable data are not available to generate the corresponding statistic.



The Human Capital Complementary Indicators (HCCIs) offer a snapshot of human capital investments at four stages of the lifecycle. The figures show the latest available data, benchmarked against regional averages. The figures also report progress over the previous 5 years.

EARLY CHILDHOOD

- **Neonatal mortality rate.** The neonatal mortality rate is **10** per 1,000 live births (2021), compared to 11 in 2016. The indicator is similar to the regional average.
- **DTP vaccination rate, third dose.** In 2022, **96%** of infants received the third dose of the diphtheria, tetanus and pertussis vaccine, compared to 98% in 2017. The indicator is above the regional average.
- **Pre-primary school gross enrollment ratio.** The pre-primary school gross enrollment ratio at the age group that officially correspond to that level of education is **94%** (2021), compared to 90% in 2016. The indicator is higher than the regional average.

SCHOOL AGE

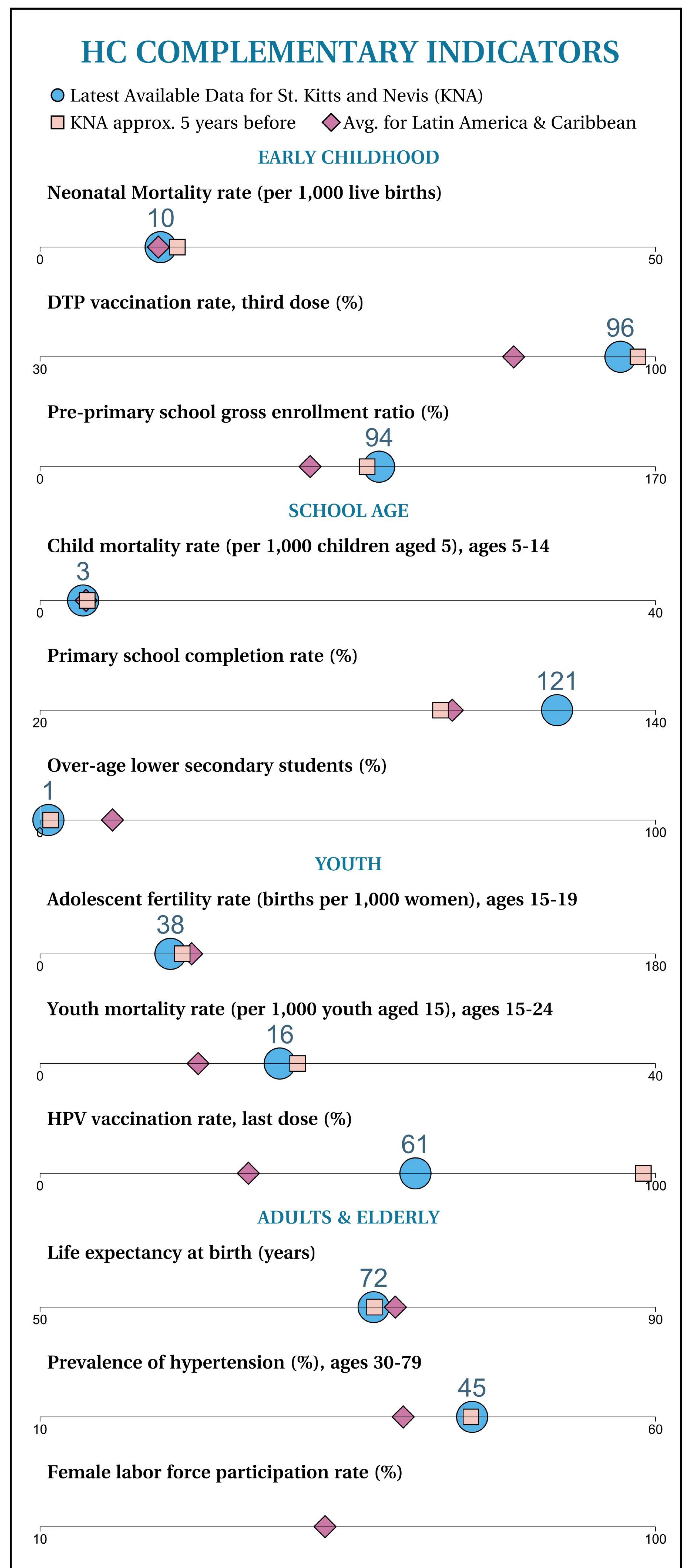
- **Child mortality rate.** The mortality rate for children ages 5-14 is **3** per 1,000 children aged 5 (2021). This remains unchanged since 2016. The indicator is similar to the regional average.
- **Primary school completion rate.** The primary school completion rate at the official entrance age of the last grade of that level is **121%** (2021), compared to 98% in 2016. The indicator is above the regional average.
- **Over-age lower secondary students.** The percentage of lower secondary school students who are older than the typical age for their respective school level is **1%** (2021), compared to 2% in 2016. The indicator is lower than the regional average.

YOUTH

- **Adolescent fertility rate.** The number of births for every 1,000 women ages 15-19 is **38** (2021), compared to 42 in 2016. The indicator is lower than the regional average.
- **Youth mortality rate.** The mortality rate of youth ages 15-24 is **16** per 1,000 youth aged 15 (2021), compared to 17 in 2016. The indicator is above the regional average.
- **HPV vaccination rate, last dose.** In 2022, **61%** of females received the final dose of the HPV vaccine, compared to 98% in 2020. The indicator is higher than the regional average.

ADULTS & ELDERLY

- **Life expectancy at birth.** Life expectancy at birth is **72** years (2021). This remains unchanged since 2016. The indicator is lower than the regional average.
- **Prevalence of hypertension.** The prevalence of hypertension among people ages 30-79 is **45%** (2019). This remains unchanged since 2015. The indicator is above the regional average.
- **Female labor force participation rate.** Internationally comparable data on this indicator is not available for St. Kitts and Nevis. The regional average for this indicator is 52%.



Note: Missing symbols indicate internationally comparable data are not available to generate the corresponding statistic.

