

SIERRA LEONE

Region: Sub-Saharan Africa
Income Category: Low Income



Human capital – knowledge, skills, and good health – empowers people to achieve their potential and drives economic growth. This brief tracks progress by Sierra Leone in building and using human capital. This page presents the Human Capital Index (HCI), its components parts, and relevant benchmarks. The HCI quantifies how underinvestment in education and health for today’s children reduces future incomes. Data are the most recently available as of 2020. The back page presents a set of Human Capital Complementary Indicators (HCCI) that shows progress at each stage of the lifecycle.

THE HUMAN CAPITAL INDEX

A child born in Sierra Leone will be **36%** as productive when she grows up as she could be if she enjoyed complete education and full health.

This is lower than the average for the Sub-Saharan Africa region (40%) but slightly lower than for Low Income countries (37%).

THE HUMAN CAPITAL INDEX COMPONENTS

- **Probability of Survival to Age 5.** Of every 100 children born in Sierra Leone, **89** survive to age 5.
- **Expected Years of School.** In Sierra Leone, a child who starts school at age 4 can expect to complete **9.6** years of school by her 18th birthday.
- **Learning-Adjusted Years of School.** Factoring in what children actually learn, expected years of school is **4.9** years.
- **Average Harmonized Test Scores.** Students in Sierra Leone score **316** on a scale where 625 represents advanced attainment and 300 represents minimum attainment.
- **Adult Survival Rate.** Across Sierra Leone, **63%** of 15-year-olds survive until age 60.
- **Fraction of Children Under 5 Not Stunted.** Approximately **71** out of 100 children are not stunted. This means that **29** out of 100 children are at risk of cognitive and physical limitations that can last a lifetime.

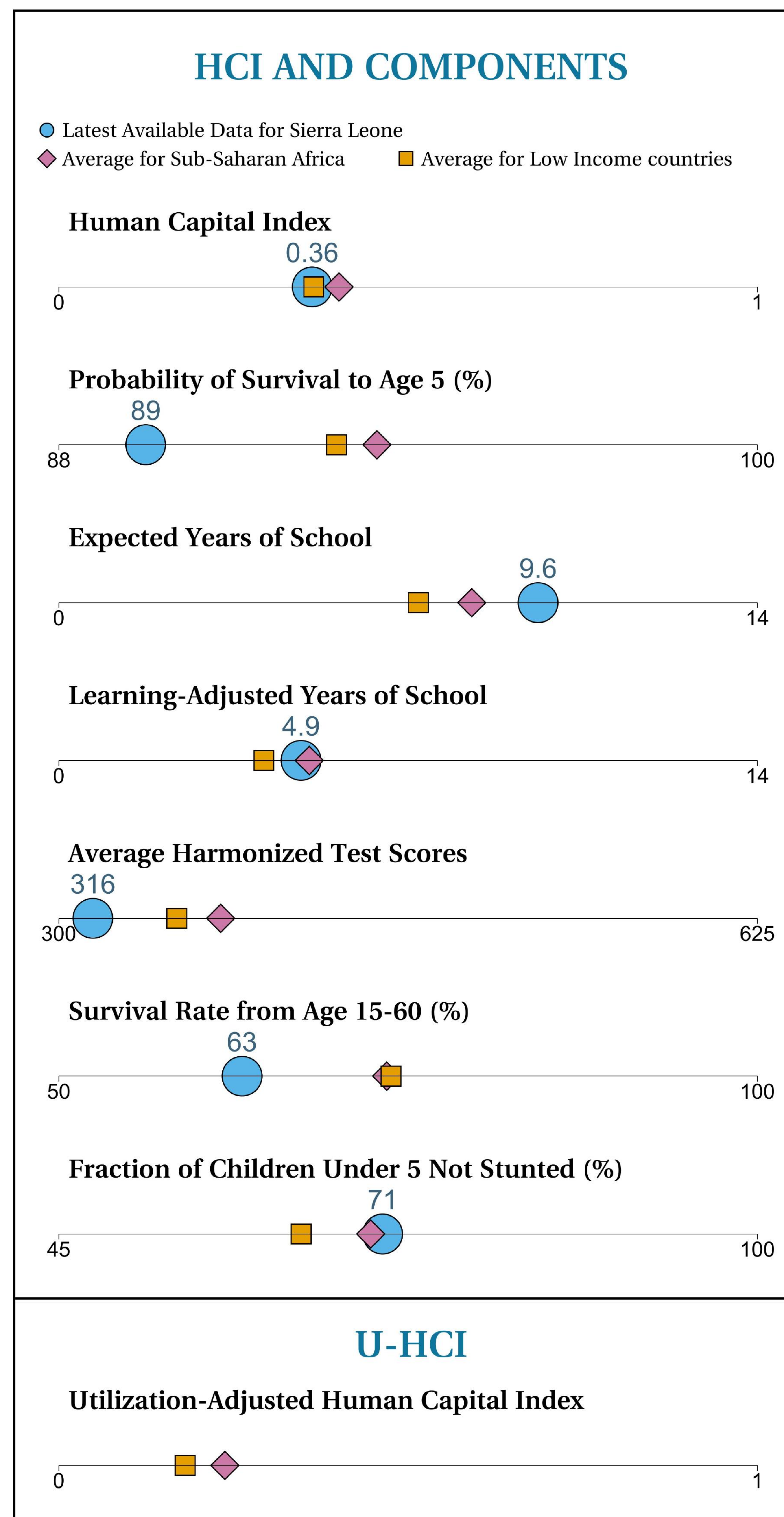
UTILIZATION-ADJUSTED HUMAN CAPITAL INDEX

The Utilization-adjusted Human Capital Index (U-HCI) scales down the HCI by taking into account how many adults are not employed. The data on the utilization-adjusted human capital index are not available for Sierra Leone. The regional average for this indicator is **0.24** and the income group average is **0.18**.

Gender differences in Human Capital and Utilization

	Boys	Girls	Overall
Human Capital Index	0.36	0.37	0.36
Utilization-Adjusted HCI	-	-	-

Note: - represents no internationally comparable data available.



Note: Missing symbols indicate internationally comparable data are not available to generate the corresponding statistic.

The Human Capital Complementary Indicators (HCCIs) offer a snapshot of human capital investments at four stages of the lifecycle. The figures show the latest available data, benchmarked against regional averages. The figures also report progress over the previous 5 years.

EARLY CHILDHOOD

- **Neonatal mortality rate.** The neonatal mortality rate is **31** per 1,000 live births (2021), compared to 34 in 2016. The indicator is higher than the regional average.
- **Participation rate in organized learning.** In 2018, **42%** of children who were one year younger than the official primary school entry age participated in an organized learning program, compared to 34% in 2015. The indicator is below the regional average.
- **Minimum meal frequency.** The share of children ages 0-23 months who regularly consume an age-appropriate meal is **32%** (2019), compared to 42% in 2017. The indicator is lower than the regional average.

SCHOOL AGE

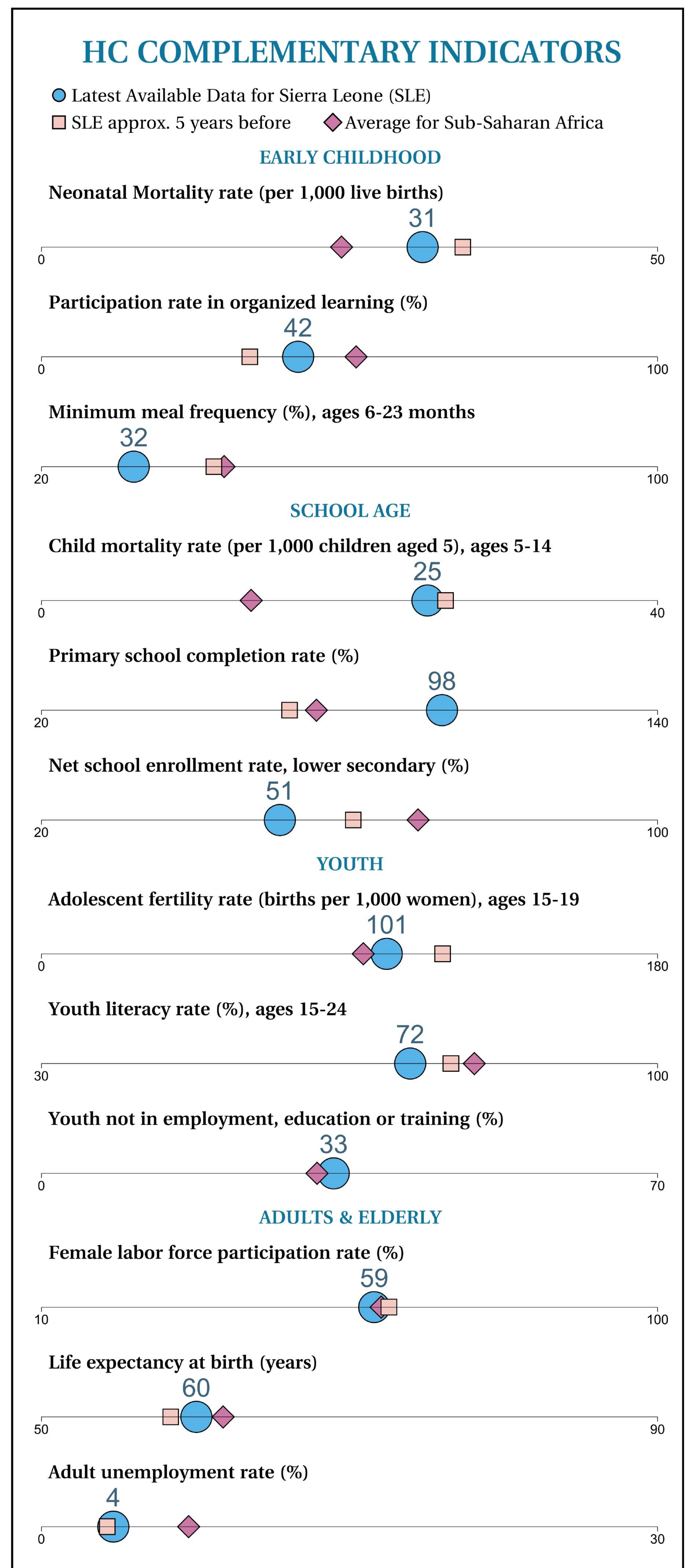
- **Child mortality rate.** The mortality rate for children ages 5-14 is **25** per 1,000 children aged 5 (2021), compared to 26 in 2016. The indicator is higher than the regional average.
- **Primary school completion rate.** The primary school completion rate at the official entrance age of the last grade of that level is **98%** (2021), compared to 68% in 2016. The indicator is above the regional average.
- **Net school enrollment rate, lower secondary.** The percentage of lower secondary school-aged children enrolled at that level is **51%** (2018), compared to 61% in 2016. The indicator is lower than the regional average.

YOUTH

- **Adolescent fertility rate.** The number of births for every 1,000 women ages 15-19 is **101** (2021), compared to 117 in 2016. The indicator is higher than the regional average.
- **Youth literacy rate.** The share of youth (ages 15-24) who are literate is **72%** (2021), compared to 77% in 2019. The indicator is below the regional average.
- **Youth not in employment, education or training.** In 2018, **33%** of youth (ages 15-24) were not in employment, education or training. The indicator is higher than the regional average.

ADULTS & ELDERLY

- **Female labor force participation rate.** Female labor force participation as a percentage of the female working-age population (ages 25+) is **59%** (2022), compared to 61% in 2017. The indicator is lower than the regional average.
- **Life expectancy at birth.** Life expectancy at birth is **60** years (2021), compared to 58 in 2016. The indicator is below the regional average.
- **Adult unemployment rate.** Unemployed adults as a share of the adult labor force (ages +25) is **4%** (2022), compared to 3% in 2017. The indicator is lower than the regional average.



Note: Missing symbols indicate internationally comparable data are not available to generate the corresponding statistic.

