

CHLORIDE

by  Signify

Exit and Emergency
product catalog



**Prepare for the
unexpected with products
you can count on**

Architectural

The upper echelon of our product offering, the architectural series is designed with high style and high quality in mind. Features including die cast construction and edge-lit panels combine with advanced designs to create a stylish product for higher-end spaces and projects.

Architectural exits



Chloride 44R exit features a contemporary compact design. The universal 44R exit can be surface mounted (ceiling, wall, end) or recessed mounted (ceiling, wall) all with one specified catalog number.

- Universal mounting
- Self-Diagnostic standard (universal mount)
- Self-Test standard (universal mount)
- UL Damp location listed
- Field selectable self-adhesive chevrons
- DoE compliant



Chloride Caliber exit is designed with a slim profile and available in numerous finishes that are complementary to architectural spaces. It provides universal mounting and self-diagnostics as a standard feature on all models.

- Self-Diagnostic standard
- Universal mounting includes recessed ceiling and surface mount (end / wall / ceiling)
- Meets NEMA Premium standard
- UL Damp location listed
- Field selectable self-adhesive chevrons
- 6" and 8" (NYC) letters available
- DoE compliant
- California Energy Commission compliant

Architectural Exits



Chloride Edge-Glo edge-lit exit features an attractive chamfered acrylic panel with floating letters. Bottom edge of panels reflectorized to facilitate even illumination

- Injection molded clear acrylic panels with chamfered edges
- Red on white signs with Chicago code arrows are approved by Chicago Fire Department and Chicago Department of Buildings.
- CCEA (City of Chicago Environmental Air) Approved
- Recessed and surface mount housings



Chloride 45V exit is a high quality specification grade edge lit exit sign that is aesthetically appealing and designed for architectural excellence. It includes self-diagnostic/self-test circuitry, standard on all models.

- Self-Diagnostic standard
- Self-Test standard
- Special wording available
- Injection molded wedge shaped panel
- California Energy Commission compliant
- Precision molded, etched letters and chevrons
- Exit Panel is ultra sonically welded together eliminating the need for visible hardware
- DoE compliant

Architectural emergency units



Chloride Fusion III emergency unit is a die-cast aluminum recessed LED ceiling fixture with a choice of oval or square trim plates.

- Fully gasketed with powder-painted die cast aluminum housing
- Available in white, black, aluminum or dark bronze finishes
- UV stabilized polycarbonate lens
- Optional rectangular trim plate is available (RT option)
- UL Damp location listed
- Maintenance free nickel metal hydride battery (self powered models)
- Optional self testing electronics



Chloride Patron emergency unit offers many options for indoor or outdoor lighting applications. Its stylish design is an excellent choice for architectural emergency lighting in either interior or exterior paths of egress.

- Self-Diagnostic standard
- Self-Test standard
- UL Wet location listed
- Marine grade die cast housing
- Provides linear and forward throw light distribution with all in one optic design
- AC only / Emergency Patron Unit contains integral NI-CAD battery
- UV stable polycarbonate lens

A photograph of a commercial building entrance. The building has a brick facade and a large glass door. Above the door is a white rectangular sign with the word "EXIT" in red. To the left of the door, there is a white wall with several colorful dragonfly-shaped decorations hanging from it. The sky is visible through the glass door, showing a modern building in the background.

Commercial

The core of our offering, these products are designed for general purpose applications. Whether your needs range from a basic application to one requiring a little more performance or design aesthetic, we have a high-quality product designed to meet your diverse needs and budget.



Chloride Value+ VE exit is a basic exit that offers a low profile design, giving it stylish appeal suitable for any general purpose application.

- Thermoplastic (off white) ABS housing
- Low profile, snap together quick mount design
- Universal wall/ceiling/end mounting
- UL Damp location listed
- Pop out chevron directional indicators are easily removed when required
- Extra stencil faceplate for double face sign applications.
- 6V maintenance free nickel cadmium battery



Chloride Compac CLX exit is designed to complement the Compac exit/emergency family in looks and reliability. Its sleek unobtrusive design provides general wayfinding through a building in addition to times of immediate egress in an emergency.

- Low profile snap together quick mount design
- Self-diagnostic/self test electronics as standard
- Choice of white or black housing
- Universal wall/ceiling/end mounting
- 3.6V maintenance free Nickel Metal Hydride battery
- Remote capability feeds four CLR single remote or two dual CLR LED lamp heads



Chloride 55 series exit is a low profile, die cast aluminum commercial exit sign offering even illumination of letters and high-end aesthetics.

- Universal Mounting
- Self-Diagnostic standard (ER55LD models)
- Self-Test standard (ER55LD models)
- UL Damp location listed
- Universal face plates
- Field removable chevrons
- DoE compliant



Chloride EX series exit features classic styling and even illumination. The rugged construction, paired with long service life makes the EX series the ideal choice for many exit applications.

- Constructed of heavy duty 20 gauge steel with white, baked on powder coat finish
- Wall, ceiling or end mounted
- Self test, self diagnostic circuitry (EXEL models)
- Field removable chevron directional indicators
- Maintenance free sealed nickel cadmium battery
- Optional black finish



Chloride SC series exit offers a low profile cast aluminum design for aesthetically sensitive environments

- Universal Mounting
- Self-Diagnostic standard
- NEMA Premium certified
- California Energy Commission compliant
- Universal face plates – one catalog number for single and double faceplates
- Special wording available
- Field removable chevrons
- DoE compliant



Chloride SL series exit is a self luminous exit that does not require external power, thus eliminating wiring and minimizing installation costs.

- Great for unique applications including harsh, corrosive, humid or explosive environments
- Flame retardant, UV stabilized, injection molded ABS frame
- Exit is totally self contained and highly durable
- Easily installed in ceiling, wall or flush mount applications
- Extreme temperature rated, -67°F (-55°C) to 176°F (80°C)

Commercial emergency units



Chloride Value+ VLLU emergency unit features a low profile design giving it a stylish appeal suitable for any general purpose application.

- Thermoplastic (off white) ABS housing
- Wall, ceiling and surface mounting provisions
- 2, 3.6V DC long life LED lamps
- Fully adjustable LED lamp heads provides 200 lumens
- 3.6V maintenance free nickel cadmium battery
- UL Damp location listed



Chloride Value+ VLTU emergency unit is a general purpose emergency product. Featuring square LED lamp heads, its low profile design offers a pleasing appearance that is preferred over traditional units.

- Thermoplastic (off white) ABS housing
- Wall, ceiling and surface mounting provisions
- 2, 3.6V DC long life LED lamps
- Fully adjustable LED lamp heads provides 200 lumens
- 3.6V maintenance free nickel cadmium battery
- UL Damp location listed



Chloride Compac CLU emergency unit is a general purpose emergency that is designed to complement the Compac LED family. Its unobtrusive look offers great aesthetics yet delivers optimum performance.

- UV stable thermoplastic housing
- 2 -1W adjustable LED lamp heads
- Can be wall or ceiling mounted
- Supplies emergency illumination for a minimum of 90 minutes
- 3.6V maintenance free nickel cadmium battery



Chloride Compac CLU2/3 emergency units are designed to complement the Compac exit/emergency family in looks and reliability. Their sleek unobtrusive design provides great aesthetics combined with optimum performance for general wayfinding or immediate egress.

- Designed for wall or ceiling mounting
- UV stable thermoplastic housing
- Self-diagnostic/self test electronics
- CLU2 contains two 2.2W adjustable LED lamp heads
- CLU3 features three 2.2W LED lamp heads - 2 adjustable, 1 fixed
- Maintenance free sealed 7.2V nickel metal hydride battery



Chloride Compac CLUR3 emergency unit is a flush mounted emergency unit designed to complement the rest of the Compac exit/emergency family. The center lamp head is stationary while the two side lamps can be aimed for left and right angles.

- Features three 2.2W LED lamp heads, 2 adjustable, 1 fixed
- Self diagnostics, self test electronics
- 22 gauge steel back box with UV stable thermoplastic face plate
- 7.2V Nickel Metal Hydride battery

Commercial exit combo units



VLLC

Chloride Value+ VLLC and VLTC exit combo units are general purpose emergency products each featuring a sleek low profile design. Choose either round (VLLC) or square (VLTC) LED lamp heads.

- Thermoplastic (white) ABS housing
- Contractor friendly snap together design
- Can be wall, ceiling or end mounted.
- Fully adjustable LED lamp heads provide forward or backward illumination
- Maintenance-free 3.6V nickel cadmium battery
- Remote capability – 2, 1W lamp heads or 1, 2W lamp head



VLTC

Chloride Compac CLC exit combo unit features a unique integrated design combining two fully adjustable LED lamp heads with the same sleek design of the Chloride Compac CLX exit.

- Low profile design
- Two fully adjustable integrated 2.2W LED lamp heads
- Self diagnostics/ self test electronics as standard
- 7.2V Nickel Metal Hydride battery
- Remote capability





Chloride Caliber edge-lit sign has all the features of the Caliber series but offers the additional capability of special wording.

- Self-Diagnostic standard
- Universal Mounting includes recessed ceiling and surface mount (end/wall/ceiling)
- NEMA Premium certified
- UL Damp location listed
- Field selectable self-adhesive chevrons
- 6" and 8" (NYC) letters available
- 15 messages available plus additional options
- California Energy Commission compliant



Chloride Compac sign offers the same aesthetics and features as our Chloride Compac exit with the added flexibility of special wording.

- Low profile snap together quick mount design
- Self-diagnostic/self test electronics as standard
- Choice of white or black housing
- Universal wall/ceiling/end mounting
- 3.6V maintenance free Nickel Metal Hydride battery
- Remote capability feeds four CLR single remote or two dual CLR LED lamp heads
- 7 message options available



Chloride AMS series are LED illuminated signs with 4 face plate styles and a variety of mounting accessories. It is ideal for providing informational and warning messages in a wide range of architectural or commercial spaces.

- Extruded aluminum housing with acrylic face plate
- Available with black, red or green letters on a white background or "disappearing" version where red letters disappear when the sign is off
- 25 message options available
- UL Wet location listed

A photograph of a commercial kitchen or industrial area. The wall is made of light-colored, square tiles. There are several recessed ceiling lights, some of which are illuminated, casting a bright glow. The lighting creates a dramatic effect with strong highlights and deep shadows. The overall atmosphere is clean and professional.

Specialty

Demanding and harsh environments require a product for a specific application making our specialty line perfect for the challenge. From commercial kitchens to hazardous and industrial areas, we have a wide range of products to meet these applications ranging from vandal resistant and wet location to hazardous and explosion resistant fixtures.

Specialty exits



Chloride 60 series exit is designed to meet the demands of today's most extreme environments. Built for extreme temperatures and vandal resistant applications, this exit features an attractive housing constructed of durable die cast aluminum with a polycarbonate backplate and cover.

- Self-Diagnostic / Self-Test standard
- Special wording available
- NEMA Premium certified
- Meets medical military facilities specification
- UL Wet location listed
- Field selectable chevrons (removable and replaceable)
- Universal Mounting
- Tamper resistant /vandal resistant



Chloride TruPath TPE exit is a multi-purpose product offering industrial grade features and specifications combined with aesthetics suitable for most commercial applications.

- 2.4" profile specifically designed around LED technology
- 3.3 lb lightweight construction for hassle-free installation
- Compact nickel cadmium battery
- Standard Intelli-Charge self-diagnostics and optional self-test circuitry
- Interchangeable face plates



Chloride HZ series exit is designed and tested for locations requiring a hazardous location classification. It is ideal for areas that handle flammable gases, vapors and combustible dusts.

- UL Listed for Class I & II, Division 2
- Field selectable chevrons
- Self-Diagnostics standard
- DOE compliant



Chloride CEX series edge-lit exit is ideal for use in hazardous locations where explosive materials are present.

- UL Listed for Class I, Division 1, Groups C&D Class I, Division 2, Groups A, B, C & D Class II, Division 1 & 2, Groups E, F, & G and Class III, Zone 1, Groups IIA, IIB Class I, Zone 2, Groups IIA, IIB, +H2& IIC Areas
- UL 924 and 844 listed
- NFPA 101, NEC, IBC, BOCA, and OSHA illumination standard
- UL-1598/A Marine rated
- IP65

Specialty emergency units



Chloride TruPath TPU emergency unit is a multi-purpose emergency product offering industrial grade features and specifications combined with aesthetics suitable for most commercial applications.

- 3.9" low profile design with 7.4 lb lightweight construction for easier installation
- Integrated lamp heads and compact nickel cadmium battery
- Standard Intelli-Charge self diagnostics and optional self test circuitry
- Compact design with greater unit spacing



Chloride 65X emergency unit is unequaled in its combination of beauty and toughness. It is designed to meet the demands of the most severe wet locations or equally provide superior performance in a more architectural setting.

- Aesthetically appealing design with wall or ceiling mount options for flexibility
- UV stabilized polycarbonate and lexan construction
- UL Wet location listed
- Fully adjustable MR16 lamp heads
- 6V nickel cadmium battery



Chloride Rhyno emergency unit features an IP66 rating to resist particulates, oil, water spray down, and other non-corrosive matter.

- Impact resistant Lexan construction with corrosion resistant hardware
- IP66 rated
- NSF Standard 2 and NEMA 4X classification
- Self powered models feature Intelli-Charge circuitry along with brownout detection and AC lockout with low voltage disconnect



Chloride Max-Lite series emergency unit is sealed and gasketed for areas where oil, water and dust resistance is needed as well as having a rugged thermoplastic housing.

- Constructed of impact resistant, fiberglass reinforced polyester gray housing and includes stainless steel hardware
- UL damp and wet location listed
- Self-powered models feature Intelli-Charge self-diagnostic circuitry
- Wall mounted unit



Chloride Steel-Lite series emergency unit is built for extreme environments and is constructed of an impact-resistant, fiberglass reinforced polyester gray housing and includes stainless steel hardware

- Designed for increased protection against incidental or intentional abuse
- Class 1, Div 2 rated
- 120/277 VAC dual voltage input with surge protection
- Wall mounted



CMF/CNM



TMF/TNM

Chloride CMF/CNM and TMF/TNM series emergency units are constructed of 18 to 20 gauge steel and has the versatility of six conduit knockouts to customize lamp head configurations

- Intelli-Charge self-diagnostic circuitry
- Corrosion resistant white epoxy powder coat finish. Other standard and custom colors available
- 6V Tungsten or Halogen lamps (CMF/CNM)
12V Tungsten or Halogen lamps (TMF/TNM)
- UL listed for damp locations

Specialty exit combo units



Chloride TruPath TPC exit combo unit is a multi-application exit combo offering industrial grade features and specifications combined with aesthetics suitable for most commercial applications

- 2.6" profile with 8.6 lb lightweight construction for easy installation
- Pre-aimed concealed LED lamp heads save installation time and ensure ideal lamp coverage
- Nickel metal hydride battery
- Standard Intelli-Charge self diagnostics and optional self-test circuitry



Chloride HZ series exit combo unit is designed and tested for locations requiring a hazardous location classification. It is ideal for areas that handle flammable gases, vapors and combustible dusts.

- Impact resistant fiberglass reinforced polyester housing with stainless steel hardware and clear polycarbonate face plate
- UL listed for Class 1, Div 2
- Self powered models feature Intelli-Charge circuitry along with brownout detection, AC lockout and low voltage disconnect

Hazardous remotes/accessories



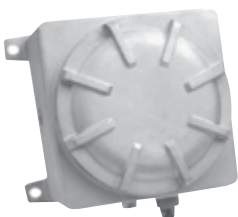
Chloride R series explosion rated luminaires are designed to withstand extremely harsh industrial environments. The R series is available in ceiling, wall or pendant mount configurations.

- Copper free cast aluminum enclosure with corrosion resistant epoxy powder coat finish
- Includes high impact heat resistant globe with a cast aluminum globe guard and stainless steel hardware
- Illumination is accomplished with halogen, incandescent, or compact fluorescent lamps



Chloride CD series combustible dust emergency lighting fixtures are designed for remote and unit equipment mounting applications where suspended metal carbon and grain dust create an explosive or ignitable atmosphere.

- Suitable for use in Class II, Division 1 & 2, Groups E F & G. and Class III areas
- Remote mount from an area located outside the hazardous area via a 6V DC or 12V DC battery unit
- Corrosion-resistant, cast aluminum alloy with an epoxy polyester finish
- Illumination is accomplished with halogen or incandescent lamps that are adjustable to 360°



Chloride IX series explosion resistant power supply is constructed of cast aluminum and designed to withstand the impact of explosions.

- Nickel cadmium 28W, 14W, and 50W power pack options
- Copper free cast aluminum enclosure with threaded cover for easy attachment and removal
- 120/277 VAC dual voltage input
- Low voltage disconnect, AC lockout and brown out protection

Exit comparison



	Architectural				Commercial		
Product Family	44R	Caliber	Edge-Glo	45V	Value+	Compac LED	55 Series
Size (W x H x D)	11-1/4" x 10-3/16" x 4-5/16" surf. mount 14-9/16" x 8-1/16" x 3-3/16" rec. mount 12-9/16" x 9-9/16" x 4-5/16" end mount	17-1/4" x 9-5/16" x 4" 8" rec. ceiling mount 17-3/4" x 12" x 4-1/2" 8" surf. end mount 14 1/4" x 12" x 4-1/2" 8" surf. ceiling mount 14-1/4" x 12 x 2-1/2" 8" surf. wall mount	16-1/4" x 5-1/2 x 3" recessed housing 17-1/8" x 5-1/2" x 4" surface housing	14-1/2" x 9-3/4" x 3/4"	11-13/16" x 7-1/4" x 1-13/16"	13-3/4" x 8-11/16" x 2-1/8"	12-13/16" x 9-1/8" x 1-3/4"
Housing	Aluminum	Premium die-cast aluminum	20 gauge cold rolled steel	Extruded aluminum trim plate / 20 gauge plated steel	Thermoplastic	Thermoplastic	Die-cast aluminum
Panel	Acrylic	Acrylic	Injection molded clear acrylic	Acrylic	N/A	N/A	N/A
Chevrons	Self-adhesive	Self-adhesive	Yes /full length arrows (Chicago)	Yes	Pop-out	Pop-out	Concealed knock-out
Mounting	Universal/surface	Universal/surface	Recessed/surface	Recessed/surface	Universal	Universal	Universal
Special Wording	N/A	Yes	NA	N/A	N/A	Yes	N/A
Faces	Single/double	Single/double	Single/double	Single/double	Single/double	Single/double	Single/double
Font Color	Red/green	Red/green	Red on white/clear	Red/green	Red/green	Red/green	Red/green
Housing Color	Satin aluminum/white	Brushed aluminum/white/black/dark bronze	White/Black/Brushed Stainless	Satin aluminum / white/black /dark bronze	White	White/black	Matte black/white with brushed aluminum face plate
Self Test	Self-powered models only	Self-powered models	NA	Standard	N/A	Standard	Option
Self Diagnostics	Self-powered models only	Self-powered models	NA	Standard	N/A	Standard	Option
Temperature Range	10°C to 40°C (50°F to 104°F)	0°C to 40°C (32°F to 104°F)	Std location listed 77° (25°C)	-20°C to 40°C (-4°F to 104°F)	-7°C to 40°C (20°F to 104°F)	10°C to 40°C (50°F to 104°F)	10°C to 40°C (50°F to 104°F)
Remote Capability	No	No	NA	No	No	Yes	No
Damp Listing	Yes	Yes	NA	No	Yes	Yes	Yes
Wet Listing	No	No	NA	No	No	No	No
UL Listing	UL 924	UL 924	UL 924 (AC only exits) ETL to UL 924, NFPA 101, NEC, IBC, BOCA and OSHA Illumination std	UL 924	UL 924	ETL to standard 924	UL 924
Battery	NiCad	NiCad	NiCad	NiCad	NiCad	NiMH	NiCad
Classification	N/A	N/A	NA	N/A	N/A	N/A	N/A
City of Chicago approved	N/A	N/A	Yes	N/A	N/A	N/A	N/A
New York City approved	Yes	Yes	N/A	N/A	N/A	N/A	N/A
Limited Warranty	3 year	5 year	5 Year on electronics and unit, battery 3 year pro-rata	5 year	3 year	5 year	5 year



				Specialty			
EX Series	40 Series	SC Series	SL Series	60 Series	TruPath	HZ Series	CEX
12-1/4" x 7-3/4" x 2-1/4"	15-1/2" x 10-1/2" x 1-3/4"	13-1/4" x 8-3/4" x 1-3/4"	14" x 8-1/2" x 1" Plastic frame single face 14" x 8-1/2" x 2-1/4" Plastic frame double face 12-3/4" x 8-1/4" x 1-13/16" Alum. frame single face 12-3/4" x 8-1/4" x 2-3/4" Alum. frame double face	13-15/16" x 10" x 4-1/2"	14-5/8" x 8-3/4" x 2-1/2"	13-1/4" x 11-1/4" x 6-5/8"	21" x 16" x 6" (end mount) 14-7/8" x 16" x 3-7/8" (wall/pendant)
Die-formed steel	Die-cast aluminum	Die-cast aluminum	ABS construction with optional vandal resistant polycarbonate lens	Heavy-duty diecast aluminum and injection molded polycarbonate	Polycarbonate	Fiberglass reinforced polyester	Cast aluminum enclosure
N/A	N/A	N/A	Gray plastic frame std. White, black, brushed aluminum optional	N/A	N/A	N/A	Acrylic
Field removable	Field selectable	Field selectable	Field selectable	Field selectable	Field selectable	N/A	Field selectable
Wall/ceiling/end	Wall/ceiling/end	Universal	Universal	Top and end canopy, wall mount	Universal	Wall	Wall/pendant/end-mount
N/A	N/A	N/A	N/A	Optional	Optional	N/A	N/A
Single/double	Single	Single/double	Single/double	Single/double	Single	Single	Single/double
Red/green	Red	Red/green	Red/green panel	Red/green	Red/green	Red/green	Red/green
White standard/black optional	Matte black with brushed aluminum face/ brushed aluminum/black/white	White/black/aluminum housing with white/black/aluminum face plate	Gray/black/white/brushed aluminum frames with green or red panels	White housing and white stencil /black housing and black stencil /gray housing and gray stencil /white housing and brushed/aluminum stencil / black housing and brushed / aluminum stencil / gray housing / brushed aluminum stencil	White	Gray	Gray
Option	N/A	Self-powered models	N/A	Standard	Option	Option	N/A
Option	Option	Self-powered	N/A	Standard	Standard	Standard	N/A
0°C to 50°C (32°F to 122°F)	-7°C to 40°C (20°F to 104°F)	AC -40°C to 40°C (-40°F to 104°F) Self powered damp 0°C to 40°C (32°F to 104°F)	-55°C to 80°C (-67°F to 176°F)	-40°C to 45°C (-40°F to 113°F)	-40°C to 40°C (AC Only) 0°C to 40°C (Self powered Intelli-Charge, damp location) -35°C to 40°C Cold weather (htr option required)	19°C to 30°C (65°F to 85°F)	10°C to 40°C (50°F to 104°F)
No	No	Yes (batt only)	No	No	No	No	No
Yes	Yes	Optional	No	Yes	Yes	No	No
No	No	No	No	Yes	Yes	No	Yes
UL 924	UL 924	UL 924	UL 924	ETL to standard 924	UL 924	UL 924 and 844	UL 924 and 844
NiCad	NiCad	NiCad	N/A	NiCad	NiCad	NiCad	NiCad
N/A	N/A	N/A	N/A	N/A	N/A	Class I & II Div 2	N/A
N/A	N/A	N/A	N/A	N/A	N/A	N/A	N/A
N/A	Yes	N/A	N/A	N/A	N/A	N/A	N/A
5 year	5 year	5 year	10 or 20 years, based on useful life of exit chosen	5 year	5 year	5 year	5 year

Units comparison



	Architectural		Commercial			
Product Family	Fusion III	Patron LED	VLLU	VLTU	Compac LED CLU	Compac LED CLU2/3
Size (W x H x D)	15" x 5-5/8" x 3-1/2"	7-1/2" x 11-1/8" x 3-3/4"	7-5/16" x 4-1/4" x 2-3/16"	10" x 5-1/8" x 4"	7-1/8" x 4-3/4" x 2-5/8"	10-1/4" x 4-3/4" x 2-5/8"
Housing	Die-cast aluminum	Die-cast aluminum	Thermoplastic	Thermoplastic	Thermoplastic	Thermoplastic
Max Coverage/ Spacing (1 fc)	76 ft (center to center)	62 ft (two units center to center, Indoor)	16 ft / 24 ft	24 ft	40 ft center to center / 36 ft single coverage	76 ft center to center / 64 ft single coverage
Mounting	Ceiling	Wall	Wall/ceiling	Wall/ceiling	Wall/ceiling	Wall/ceiling
Housing Color	White/black/aluminum/dark bronze	Dark bronze/white/black/titanium/custom	White	White	White/black	White/black
Self Test	Option	Standard	N/A	N/A	Standard	Standard
Self Diagnostics	Standard, self powered models	Standard	N/A	N/A	Standard	Standard
Temperature Range	-40°C to 40°C (-40°F to 104°F) AC only -0°C to 40°C (-32°F to 104°F) Self pwrd	-20°C to 50°C (-4°F to 122°F) -29°C to 50°C (-20°F to 122°F) with heater	-10°C to 40°C (50°F to 104°F)	-10°C to 40°C (50°F to 104°F)	-10°C to 40°C (50°F to 104°F)	-10°C to 40°C (50°F to 104°F)
Remote Capability	N/A	N/A	Yes	Yes	No	Yes
Damp Listing	Yes	No	Yes	Yes	Yes	Yes
Wet Listing	No	Yes	No	No	No	No
Listings	UL 924	UL 924 / UL 1598	UL 924	UL 924	UL 924 / NSF	UL 924
Battery	NiMH	NiCad	NiCad	NiCad	NiCad	NiMH
Lamps	Two - 14W	Eight- 3W	Two - 1W (Two - 2W VLLU2)	Two- 1W	Two - 1W	Two - 2.2W (Three - 2.2W CLU3)
Classification	N/A	N/A	N/A	N/A	N/A	N/A
City of Chicago approved	N/A	N/A	N/A	N/A	N/A	N/A
New York City approved	N/A	N/A	N/A	N/A	N/A	N/A
Limited Warranty	5 year	5 year	5 year	5 year	5 year	5 year



Specialty							
Compac LED CLUR3	TruPath	65X	Rhyno	Max-Lit series	Steel-Lite series	CMF/CNM Series	TMF/TNM Series
11-1/2" x 3-3/8" x 3-1/2"	15-9/16" x 7-1/16" x 3-15/16"	18-1/8" x 6-3/4" x 5-7/16"	16" x 17-7/16" x 9-5/16"	13-1/4" x 21-7/16" x 7-1/8"	13-1/4" x 21-7/16" x 7-1/8"	12-3/4" x 15" x 3-15/16" (2 lamp heads, 25-50W) 13-7/16" x 14" x 7-7/16" (3 lamp heads, 75-150W) 18-1/4" x 16" x 9-7/16" (3 lamp heads, 200-450W)	12-3/4" x 13" x 3-15/16" (2 lamp heads, 25-50W) 13-7/16" x 14" x 7-7/16" (3 lamp heads, 75-150W) 18-1/4" x 16" x 9-7/16" (3 lamp heads, 200-450W)
Thermoplastic	Polycarbonate	Polycarbonate	Lexan	Reinforced fiberglass polyester	Reinforced fiberglass polyester	20 ga steel (25- 50W), 18 ga steel (75-100W)	20 ga steel (25- 50W), 18 ga steel (75-450W)
85 ft center to center / 60 ft single coverage	95 ft center to center	42 ft center to center	30 ft center to center	30 ft center to center	30 ft center to center	30 ft center to center	40 ft center to center
Wall/ceiling	Wall/ceiling	Wall/ceiling	Wall, column, pole, I-beam	Wall mounted	Wall mounted	Wall mounted	Wall mounted
White/black	White	White	Gray	Gray	Gray	White	White
Standard	Option	Standard	Option	Option	Option	Option	Option
Standard	Standard	Standard	Option	Standard	Standard	Standard	Standard
-10°C to 40°C (50°F to 104°F)	-0°C to 40°C (-35°C to 40°C with heater)	12°C to 45°C (10°F to 113°F)	0°C to 40°C (32°F to 104°F) Std	19°C to 30°C (65°F to 85°F) (lead calcium battery) 0°C to 40°C (32°F to 104°F) (nickel cadmium battery)	19°C to 30°C (65°F to 85°F) (lead calcium battery) 0°C to 40°C (32°F to 104°F) (nickel cadmium battery)	19°C to 30°C (65°F to 85°F) Std location 0°C to 40°C (32°F to 104°F) Damp location	19°C to 30°C (65°F to 85°F) Std location 0°C to 40°C (32°F to 104°F) Damp location
Yes	Yes	Yes	Yes	Yes	No	Yes	Yes
Yes	Yes	No	No	Yes	No	Yes	Yes
No	Yes	Yes	Yes	Yes	No	No	No
UL 924	ETL UL 924 / NSF	ETL UL 924	UL 924, NSF, NEMA 4X	UL 924, NSF standard 2, IBC, BOCA, OSHA Illumination standard	UL 924, 844, Temperature Rating (T-Rating) 160° (T3C), NFPA 101, NEC, IBC, BOCA and OSHA Illumination std. UL listed class 1 div Groups A,B,C,D: Zone 2, Groups IIA, IIB (+H2) & IIC: and Class II, Div2, Groups F&G	UL 924, IBC, BOCA, OSHA Illumination std	UL 924, IBC, BOCA, OSHA Illumination std
NIMH	NiCad	NiCad	NiCad, Lead or Lead calcium	NiCad or Lead calcium	NiCad or Lead calcium	NiCad or Lead calcium	NiCad or Lead calcium
Three - 2.2W	Two - 5W or 7W	Two 6W, 9W or 12W	Two - 8 - 50W	6 v or 12v, Tungsten or Halogen	6 v or 12v, Tungsten or Halogen	6v Tungsten or Halogen	12v LED, Tungsten or Halogen
N/A	N/A	N/A	N/A	N/A	N/A	N/A	N/A
N/A	N/A	N/A	N/A	N/A	N/A	Yes (CHY heads only)	Yes
N/A	N/A	N/A	N/A	N/A	N/A	Yes	Yes
5 year	5 year	5 year	5 year	5 Year	5 Year	5 Year	5 Year

Exit combo comparison



	Commercial			Specialty	
Product Family	Value + VLLC	Value + VLTC	Compac CLC	TruPath TPC	HZ series
Size (W x H x D)	11-13/16" x 9-9/16" x 1-13/16"	21" x 8-1/2" x 2-9/16"	13-13/16" x 10-3/8" x 2-5/8"	13-13/16" x 10-3/8" x 2-5/8"	13-3/16" x 17-1/2" x 6-5/8"
Housing	Thermoplastic	Thermoplastic	Thermoplastic	Polycarbonate	Reinforced fiberglass polyester
Max Coverage/ Spacing (1 fc)	16 ft	24 ft	76 ft center to center/ 56 ft single coverage	36 ft	24 ft
Chevrons	Field selectable	Field selectable	Field selectable	Field selectable	Field selectable
Mounting	Universal	Universal	Universal	Universal	Wall
Special Wording Available	N/A	N/A	N/A	N/A	N/A
Font Color	Red/green	Red/green	Red/green	Red/green	Red/green
Housing Color	White	White	White/black	White	Gray
Self Test	N/A	N/A	Standard	Optional	Optional
Self Diagnostics	N/A	N/A	Standard	Standard	Standard
Temperature Range	10°C to 40°C (50°F to 104°F)	10°C to 40°C (50°F to 104°F)	10°C to 40°C (50°F to 104°F)	0°C to 40°C -35°C to 40°C (ww/htr option)	19°C to 30°C (65°F to 85°F)
Remote Capability	Yes	Yes	Yes	Yes	N/A
Damp Listing	Yes	Yes	Yes	Yes	N/A
Wet Listing	No	No	No	Yes, NSF	N/A
UL Listing	UL 924	UL 924	ETL listed to Standard 924	ETL listed to Standard 924	UL 924 and 844
Battery	Nicad	Nicad	NiMH	NiMH	Lead calcium
Lamps	Two- 1W LED	Two- 1W LED	Two- 2.2 W LED	Two - 6W integrated LEDS	6W to 25W tungsten or halogen
Classification	N/A	N/A	N/A	N/A	Class I & II Div 2
City of Chicago approved	N/A	N/A	N/A	N/A	N/A
New York City approved	N/A	N/A	N/A	N/A	N/A
Limited Warranty	3 Year	3 Year	5 Year	5 Year	5 Year

A photograph of a staircase with light-colored, speckled steps. Each step has a small, rectangular, recessed LED light fixture embedded in it. The lights are illuminated, casting a warm glow on the steps and the surrounding area. The staircase is viewed from a low angle, looking up. The background is dark, making the illuminated steps stand out.

Step/night lights

Floor plane illumination needs come in a variety of applications. From stairwells and landings, to steps and even workstations, our series of LED step and night lights offer a host of features and designs to meet the many needs of these areas.

LED night light/step lights



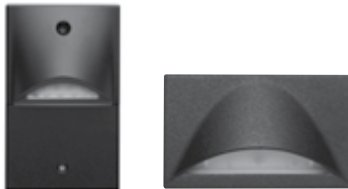
Chloride Way-Glo LED night light provides a smooth pattern of light at the floor plane. It is available in four different face plate designs with versions for both vertical and horizontal orientations.

- Available in white or amber LEDs
- Sealed optical compartment with smooth surface for simple cleaning
- UL Wet location listed
- Suitable for counter task lighting, corridors and stairwells
- Available thru wall double face option
- Three standard paint colors, white, black and aluminum

Chloride SoftGlo LED recessed night light provides low level illumination for patient rooms, corridors, steps or other commercial or residential applications.

- White or amber LED color
- Adjustable back box (1/2" to 1-1/4") to accommodate varied wall construction
- Available in three different faceplate styles
- Choice of soft white, aluminum, brushed stainless or custom color finishes

Mini LED step lights



Chloride Pathmaster LED mini step light is designed to support low-level illumination of stairwells, step landings, wheelchair ramps, exit corridors and other spaces.

- Premium die cast aluminum construction with durable powder coat finish
- Assembled as a single piece device including light engine, power supply and driver
- Available in white, black, aluminum or dark bronze finishes
- UL Damp and wet location listed

LED step lights



Chloride SD series LED step light is a recessed AC only step light for indoor or outdoor applications and is available with white or amber LEDs.

- Die-cast aluminum alloy or 18-gauge steel back box construction
- White or amber LEDs
- UL Wet location listed (die cast back box only)
- Die cast aluminum alloy face plate available in white, black, bronze or custom



Chloride MSL series LED step light is a recessed 120VAC AC only mini-step light for low-level illumination of stairwells, hallways, corridors, ramps and exits.

- One piece design installs in standard single gang switch box
- White LEDs, color temperature 2700K
- Vertical or horizontal louvered face plates in brushed aluminum, black or brown
- UL Damp location listed

Step light comparison



Night Lights

Product family	WayGlo WG1V/1H	WayGlo WG2V/2H	SoftGlo
Size (W x H x D)	4-3/8" x 5-11/16" x 1-1/4" (WG1V) 5-11/16" x 4-3/8" x 1-3/16" (WG1H)	3" x 5-11/16" x 15/16" (WG2V) 5-3/8" x 3-15/16" x 15/16" (WG2H)	8-1/4" x 6-9/16" x 3" (SO2N, SO3N) 7-15/16" x 6-1/4" x 3" (SO4N)
Housing	Die-cast aluminum, 18 gauge steel	Die-cast aluminum, 18 gauge steel	Die-cast aluminum, 20 gauge steel
LED color	White/amber	White/amber	White/amber
Wet listing	Yes	Yes	No
Thru-wall box	Yes	Yes	No
Shape	Vertical oval/horizontal oval	Vertical rectangle/ horizontal rectangle	Rectangle
Finish	Soft white/black/aluminum/ custom color	Soft white/black/aluminum/ custom color	Soft white/aluminum/brushed stain- less steel/custom color
Antimicrobial finish	Yes	Yes	No
Input voltage	120/277 dual voltage input	120/277 dual voltage input	120-277 universal voltage
Custom color	Yes	Yes	Yes
Photocell	Option	Option	No
Limited Warranty	3 year	3 year	3 year



Mini LED Step Lights

LED Step Lights

Product family	PathMaster P/PH	SDI/SDO	MSL
Size	2-3/4" x 4-1/2" x 7/8" (Pathmaster) 4-1/2" x 2-3/4" x 7/8" (horiz. Pathmaster)	9-13/16" x 3-5/8" x 3-1/2" Indoor back box (steel) 9-13/16" x 3-5/8" x 4-1/2" Outdoor back box (cast alum)	4-1/2" x 2-3/4" x 1-3/4" (Horizontal) 2-3/4" x 4-1/2" x 1-3/4" (Vertical)
Housing	Die-cast aluminum	Die-cast aluminum/steel	Single piece installs in single gang switchbox
LED color	White/amber/blue	White/amber	2700K
Wet listing	Yes	Yes (outdoor only)	Damp
Thru-wall box	No	No	No
Shape	Vertical rectangle / horizontal rectangle	Rectangle	Vertical rectangle / horizontal rectangle
Finish	White/black/aluminum/ dark bronze	White/black/bronze/ special finish	Brushed aluminum/black/brown
Antimicrobial finish	No	No	No
Input voltage	12V / 120 VAC	12V / 120 VAC	120 VAC
Custom color	Yes	Yes	No
Photocell	No	No	No
Limited Warranty	5 year	5 year	5 year

Inverters

Our Chloride series of inverter systems provides a host of solutions ensuring power is always available and when you need it most.

Mini inverters



Chloride Synthesis Z1 series mini zone inverter is designed to back up LED, fluorescent or incandescent fixtures to create an emergency lighting system.

- Universal 120 or 277 VAC input and output
- Maximum output power 250W into load PF +/- 0.90 (280 VA)
- Total connected output load: dimmable lighting loads input power 800W maximum, non-dimmable input power 250W maximum
- Heavy duty steel cabinet with white powder coat finish (black optional)
- Surface, recessed and ceiling grid mount options
- UL 924 listed for indoor and damp locations

Single phase systems



Chloride Synthesis CHUPS series offers single conversion, continuous duty uninterruptible power (UPS) capable of supporting various lighting systems including incandescent, fluorescent, electronic ballasts, HID and other various life safety loads

- Free standing NEMA 1 enclosure with locking doors and acid resistant powder coat finish
- Single conversion uninterruptible power supply (UPS)
- Multiple conduit entries
- 83% throughput efficiency
- Standard 90-minute operating time. 10 and 20 minute operating times available
- Maintenance free lead calcium battery



Chloride Synthesis CHT series uses double conversion continuous duty UPS technology. These models allow for up to 20 single pole output circuit breakers (without trip alarm) and up to 10 single pole output circuit breakers (with trip alarm).

- Solid state pulse width modulated inverter
- Operates incandescent, magnetic and electronic ballast fluorescent, high power factor compact fluorescent and HID luminaires
- Double conversion, no interruption
- Microprocessor control and diagnostic system
- UL 924 compliant, 90 minute battery back-up. 10 and 20 minute operating times available
- Free standing NEMA 1 enclosure with lockable control access panel



Chloride Synthesis CH2 series uses double conversion continuous duty UPS technology. The CH2 models allow for up to 12 single pole output circuit breakers (without trip alarm) and up to 6 single pole output circuit breakers (with trip alarm).

- Solid state pulse width modulated inverter
- Operates incandescent, magnetic and electronic ballast fluorescent, high power factor compact fluorescent and HID luminaires
- Double conversion, no interruption
- Microprocessor control and diagnostic system
- UL 924 compliant, 90 minute battery back-up. 10 and 20 minute operating times available
- Free standing NEMA 1 enclosure with lockable control access panel

Three phase systems



Chloride CH3 series is a three phase centralized inverter UPS system offering a reliable and a cost-effective way to meet NFPA code requirements. It is compatible with all luminaires and has a peak overload capability of 1700% to accommodate inrush current from LED luminaires.

- Free standing, NEMA 1 enclosure with hinged door and powder coat finish with top access for conduit entries.
- 208Y/120 VAC or 480Y/277 VAC, 3 phase, 4 wire plus ground input and output.
- 90% typical efficiency
- Double conversion, no interruption with a standard backup time of 90 minutes.
- Operates incandescent, fluorescent, LED and HID type luminaires.
- LCD color touch screen display

