



©signify

The recipe for quality, efficiency and innovation

Grocery Retail Lighting



A comprehensive portfolio

As the global leader in lighting for more than 125 years, Signify has the know-how and the most comprehensive portfolio of energy efficient technology to meet all your application needs.

In this increasingly digital world, retailers must seek new ways to engage with their customers and improve the in-store experience. Giving your customers an experience to remember is key, as is your bottom line. Signify LED lighting solutions keep aisles bright and food looking fresh, while reducing energy costs, improving operational efficiency, and personalizing the shopping experience. From retrofit products to connected solutions, Signify can help you determine the best solution for your grocery application.

Visit www.signify.com/grocery to learn more.



Capture Energy Savings

Lighting upgrades provide a significant opportunity to drastically reduce energy costs and cut ongoing operation and maintenance expenses

LED lighting can reduce energy usage and utility spend by up to 80%*, extending the life of your equipment.

Leverage IoT technology to optimize energy usage and maximize savings.

Fast-track project payback with DLC-certified products and take advantage of utility incentives.



Enhanced Experience

With more than 125 years of lighting experience, Signify designs quality products for every need

Keep aisles bright and food looking fresh with uniform LED lighting from aesthetically pleasing fixtures.

Help ensure a positive shopping experience with quality lighting and eye comfort and use controls to create zones, varying lighting to highlight different displays in the store.

Quality optics eliminate dark spots, enhancing the color of food and providing a visually appealing experience for shoppers.



Fit for the Future

Invest in innovative technology to future-proof your store with safe, sustainable and connected solutions

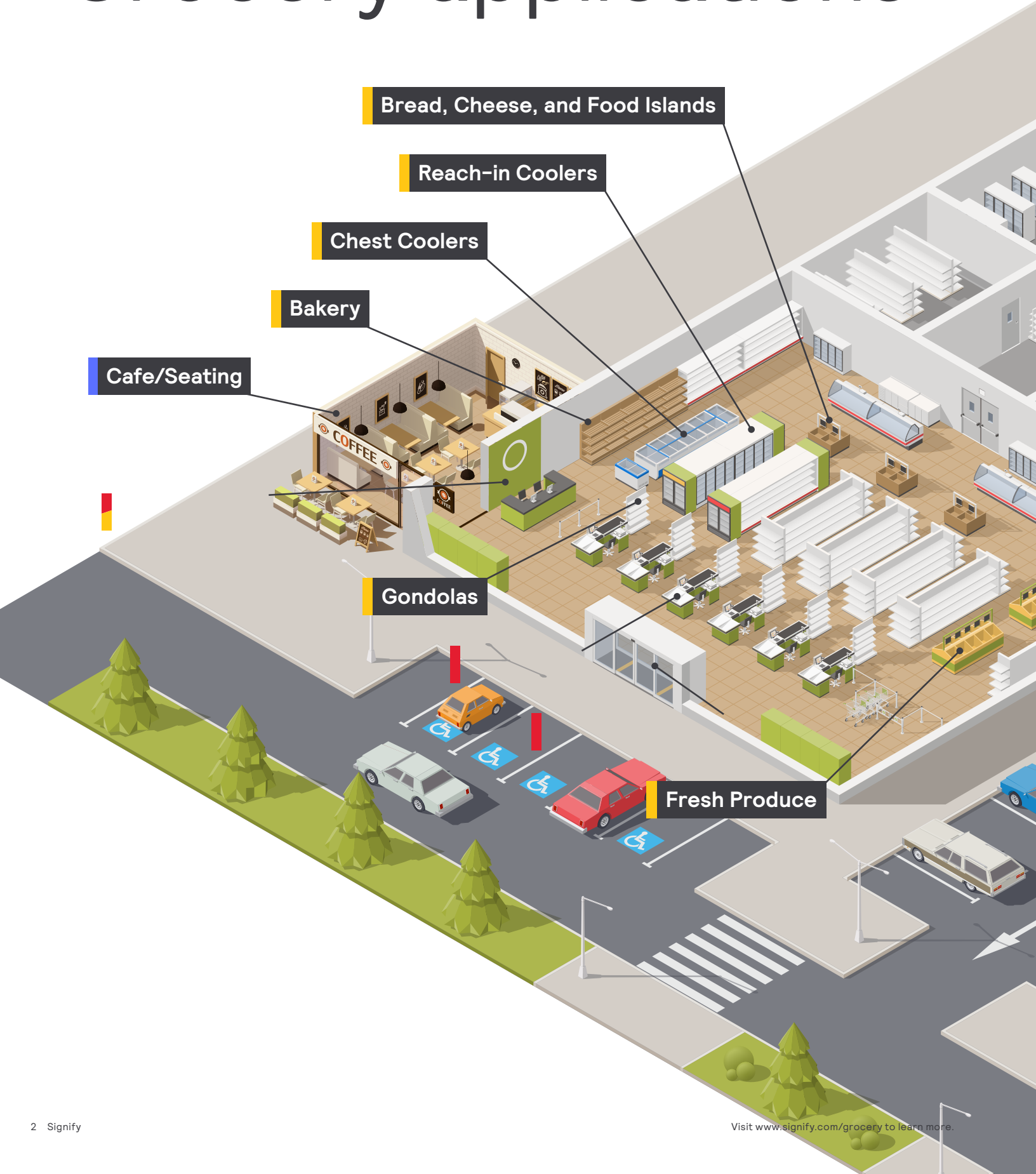
Provide peace of mind with UV-C luminaires, offering an extra layer of disinfection against bacteria, viruses, and fungal spores.

Collect data on how your customers shop with Interact IoT solutions so you can optimize your store layout and provide personalized promotions to shoppers.

Stay on trend while meeting sustainability goals and reducing your carbon footprint with 3D printed, customizable luminaires.

* When compared to traditional incandescent bulbs.

Grocery applications



Bread, Cheese, and Food Islands

Reach-in Coolers

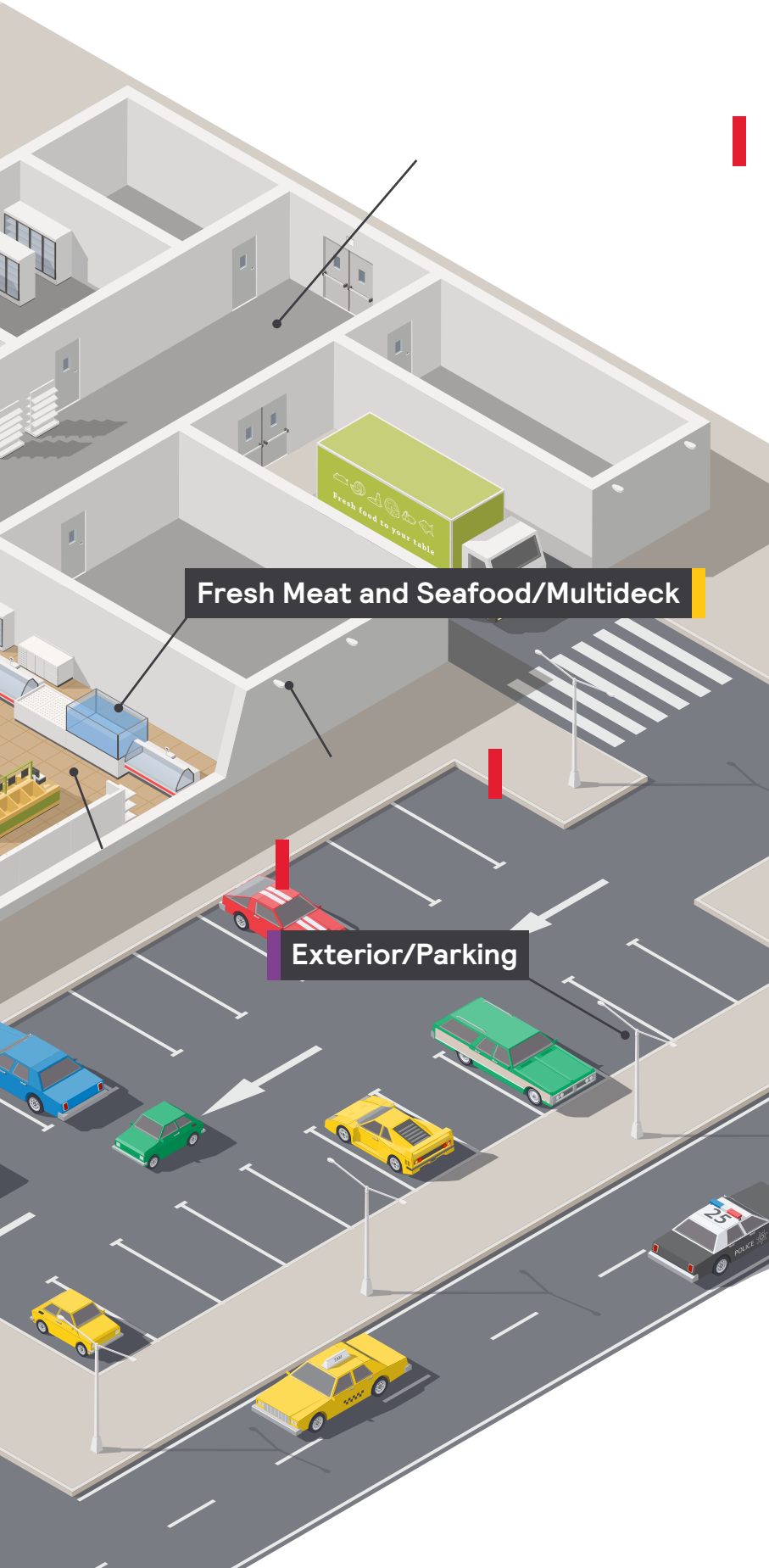
Chest Coolers

Bakery

Cafe/Seating

Gondolas

Fresh Produce



Fresh Meat and Seafood/Multideck

Exterior/Parking

General Illumination:

Provide a bright, clean enjoyable shopping atmosphere

Displays and Counter:

Highlight fresh food with lighting that accentuates the various colors and textures

Social Gathering:

Welcome your shoppers to stay and enjoy your freshly prepared food

Outdoor:

Ensure parking lots and walkways feel secure and well-illuminated



General Illumination

Greet your customers with a bright and clean atmosphere that welcomes them into the store and creates a pleasant shopping experience. An attractive store can create memorable experiences and influence shopper behavior. Different LED products can be used to help enhance product presentation in each unique area of your store.

General Illumination

Downlighting luminaires for office applications



Lightolier Flat Downlight

An easy and quick downlight solution that is perfect for shallow ceilings.



Lightolier EasyLyte

Budget-friendly, adaptable and flexible for easy-installation needs.



Lightolier LyteProfile

Flexible and design-friendly, offering both square and round options, without compromising quality.



Lightolier Calculte with IntelliHue technology

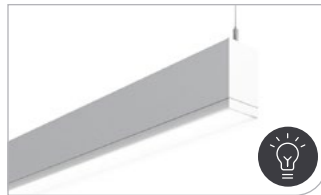
Offers quality uniform illumination with millions of combinations of precise white and color.

Architectural luminaires for sales floor and back of house applications



Day-Brite LBX Linear Suspended

Evenly light shelves to properly promote all merchandise and create a visually comfortable environment.



Ledalite TruGroove Suspended

Drives performance and exceptional uniformity.



Ledalite FloatPlane Suspended

Provides the affordability of fluorescent with the quality of high-end LED luminaires, perfect for over your check-out counters.

Recessed Troffer luminaires for office applications



Day-Brite FluxGrid

A familiar style with high quality LED light at an affordable price for your general lighting needs.



Day-Brite ClearAppeal

Delivers high performing, even illumination with an elegant aesthetic to support visual comfort.



Ledalite PureFX

Blends brightness, control and energy efficiency to illuminate your office area.

Trunking luminaires for sales floor, HBC/pharmacy and perimeter applications



Trunking System

Provides powerful, yet simple linear lighting for a seamless customer journey from shelf to sale.

General Illumination

High bay luminaires for the sales floor and back of house applications



Day-Brite FCY High Bay

Merges performance with quality for a cost-efficient, high-ceiling solution.



Day-Brite FBX High Bay

Offers a variety of lumen packages, optical distributions and accessories to provide energizing light for your shoppers.



Day-Brite FBY High Bay

Versatile in form and function with a variety of lumen packages and accessories for any store need.



Day-Brite HCY High Bay

Presents functional lighting with an aesthetic appeal and round form factor perfect for retail applications.



3D Printed PM Series

Consists of customizable, durable and high output polycarbonate pendants.



Day-Brite RBX High Bay

Fulfills your general lighting needs with a variety of lumen packages and color temperatures.

Exit / Emergency luminaires for sales floor and back of house applications



Chloride Value+ VLTC Exit Combo

Suitable for any general-purpose application with its low-profile design and affordability.



Chloride Compac CLC Exit Combo

Prepares you for any emergency with its sleek design that enables general wayfinding and immediate egress in an emergency.



Chloride Edge-Lit 44R Exit Sign

Features a contemporary universal and compact design that can be surface-mounted or recessed.

General Illumination

Track luminaires for sales floor, HBC/pharmacy and perimeter applications



Lightolier BoldFlood

Energy efficient with high quality performance and rich color saturation.



3D Printed MS Series

Allows you to choose from a variety of finishes and textures, configured to your specifications.



Lightolier SpotLED

Highly customizable and energy efficient, offering a multi-optic LED design for excellent beam quality and visual performance.

Linear luminaires for sales floor, HBC/pharmacy and perimeter applications



Day-Brite SLS Linkable Strip

Offers flexibility in size and application to shine light where it's needed and at the right levels.



Day-Brite FluxStream Strip

High performing, energy-efficient luminaire delivering smooth diffused light ideal for lighting the edge of your store.



Day-Brite FluxSpace

Featuring a small form factor with a wide range of lumen packages and optical distributions, FluxSpace offers an abundance of value and performance for a variety of applications. AccuRender technology offers the highest color quality at the highest efficacy to keep food looking fresh and vibrant.



Day-Brite LBX Linear Suspended

Evenly light shelves to properly promote all merchandise and create a visually comfortable environment.

Vaportight luminaires for back of house applications



Day-Brite VTC Sealed Strip

Durable, wet location rated product designed for use in both indoor and outdoor environments.



Day-Brite FluxStream Sealed Strip

High performing luminaire delivering smooth diffused light ideal for back of house use.



Day-Brite V3W Vaporlume

Specialized wet location, IP rated product designed for use in indoor and outdoor environments.



Day-Brite DW Vaporlume Industrial

Wet location industrial product designed for both indoor and outdoor applications. It features an LED light source, enabling it to easily replace fluorescent sources with its reliable performance in cold conditions.

Retrofit solutions

Recessed Troffer luminaires for office applications



Philips EvoKit retrofit kit

Easily upgrade existing fluorescent troffers to fast-track payback with energy-efficient LEDs in just 5 minutes.

LED A-Shape lamps



Philips CorePro LED A-Shape lamps

Deliver energy savings, minimized maintenance cost and dependable performance, compared to traditional incandescent bulbs, to meet your basic lighting needs.



Philips MasterClass LED A-Shape lamps

Feature smooth dimming down to 10% or less in a variety of color temperatures to create an inviting atmosphere any time of day.

LED PAR lamps



Philips CorePro LED PAR and MR lamps

Offer efficiency and quality to meet your basic lighting needs.



Philips MasterClass LED ExpertColor PAR lamps

Provide warm, rich light and vivid reds to make fresh food "pop."

LED High Bay lamps



Philips CorePro LED High Bay lamps

Help reduce energy usage in your existing HID high bay retail application.



Philips MasterClass LED TrueForce High Bay lamps

Couple light distribution and high color rendering with energy efficiency to help create a comfortable and high productivity environment.

TLED lamps



Philips CorePro LED InstantFit Linear lamps

Integrate into traditional fluorescent form factors to upgrade your sales floor and conserve energy.



Philips MasterClass LED InstantFit Linear lamps

Provides consistent light output for quality illumination and are available in plastic for shatter resistance.

UV-C solutions

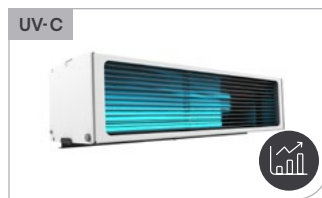
Solutions for for upper air and surface applications

UV-C lighting can play an important role in neutralizing harmful viruses and bacteria, especially in mask-off environments such as cafes. This additional layer of protection may provide a greater sense of comfort for both shoppers and employees. UV-C upper-air systems can also run continually, helping to reduce the need for manual disinfection, especially in high-traffic areas such as restrooms or check-out counters.



Alkco UV-C Upper Air U2C 2x2 Grid Ceiling Mount

Treats air in occupied spaces to offer a layer of protection against bacteria, viruses, and fungal spores to help your customers and employees feel secure.*



Alkco UV-C Upper Air UWL Louvered Wall Mount

Treats air in occupied spaces to offer a layer of protection against bacteria, viruses, and fungal spores to help your customers and employees feel secure.*



Alkco UV-C Surface UST Strip

Can be used on preparation surfaces and equipment with surface and suspended mounting options.



Alkco UV-C Surface UHB High Bay

Can be used on preparation surfaces and equipment for ceiling heights of 10' to 25'.

Control Systems for UV-C management applications



Philips Dynalite UV-C Control System

Control system allows the UV-C lighting system to be used and operated with greater safety than a system without an equivalent control solution in place.

UV-C Chambers for object disinfection applications



Once BioShift Chambers

Uses UV-C light on objects placed in the chamber.

* Signify wall mount and ceiling mount upper air UV-C luminaires were tested for SARS-CoV-2 in Innovative Bioanalysis Lab. The wall-mounted luminaire achieved 99.9% reduction in 10 minutes and the ceiling mount luminaire achieved 92.6% reduction in 20 minutes. The luminaires were also tested for Escherichia coli in Intertek Lab. Both luminaires achieved 99.9% reduction in 45 minutes.



Display and Counter

Make your produce, meats, and cheeses shine with lighting that accentuates the vivid colors and textures associated with freshness and great taste. LED lighting can reduce glare and dark spots to enhance visibility and keep meat and produce looking vibrant.

Display and Counter

Track luminaires for refrigerated reach-in coolers and freezer applications



Lightolier BoldFlood

Energy efficient with high quality performance and rich color saturation.



3D Printed MS Series

Allows you to choose from a variety of finishes and textures, configured to your specifications.



Lightolier SpotLED

Highly customizable and energy efficient, offering a multi-optic LED design for excellent beam quality and visual performance.

Retail display luminaires for reach-in refrigerator and freezer applications



Philips Fortimo LEDFlex

Combines quality light with unique flexibility to help reduce energy usage in your coolers.



Philips CertaFlux

Easily assembled and provides rapid energy payback time with a lifetime > 50,000 hours (Lifetime measured to B50/L70).



Philips RDL PrimeSet

Allows for vertical freezer door integration with energy efficient uniform illumination, while reducing glare and dark spots using glare-free mounting profiles.



Philips InteGrade

Optimizes your energy usage while making merchandise pop to deliver the ultimate experience for your customers.

Linear luminaires for gondola aisle applications



Day-Brite SLS Linkable Strip

Offers flexibility in size and application to shine light where it's needed and at the right levels.



Day-Brite FluxStream Strip

High performing, energy-efficient luminaire delivering smooth diffused light ideal for lighting the edge of your store aisles.



Day-Brite FluxSpace

Featuring a small form factor with a wide range of lumen packages and optical distributions, FluxSpace offers an abundance of value and performance for a variety of applications. AccuRender technology offers the highest color quality at the highest efficacy to keep food looking fresh and vibrant.



Day-Brite LBX Linear Suspended

Evenly light shelves to properly promote all merchandise.

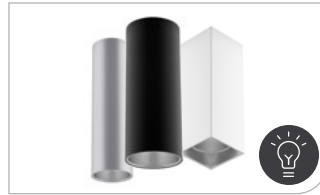
Display and Counter

Pendant luminaires for counter area applications



3D Printed Pendant

Maximize visual appeal, beam spreads options, color temperatures, lumen options, and ensure ease of long-term maintenance by selecting from a variety of Philips PAR Lamps.



Lightolier Calcilite Cylinder

Features industry leading visual comfort and uniform illumination to accent beauty products and provide ideal visibility at your counter.

Architectural luminaires



Ledalite

Explore the entire offering of award-winning, inspiring, and innovative indoor lighting solutions that allow specifiers to create a unique vision.



Color Kinetics PureStyle IntelliHue Powercore

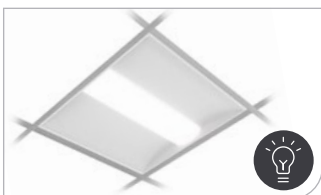
Offers high-brightness wall grazing with excellent CRI and color-changing capabilities.



Color Kinetics PureStyle Compact IntelliHue Powercore

Provides glow, backlighting, and wall washing with excellent CRI and color-changing capabilities

Recessed Troffer luminaires for counter area applications



Day-Brite FluxGrid

A familiar style with high quality LED light at an affordable price for your general lighting needs.



Day-Brite ClearAppeal

Delivers high-performing, even illumination with an elegant aesthetic to keep your customers comfortable.



Ledalite PureFX

Blends brightness, control and energy efficiency to illuminate your displays.

Retrofit solutions

Recessed Troffer luminaires for counter area applications



Philips EvoKit retrofit kit

Easily upgrade existing fluorescent troffers to fast-track payback with energy-efficient LEDs in just 5 minutes.

LED A-Shape lamps



Philips CorePro LED A-Shape lamps

Deliver energy savings, minimized maintenance cost and dependable performance, compared to traditional incandescent bulbs, to meet your basic lighting needs.



Philips MasterClass LED A-Shape lamps

Feature smooth dimming down to 10% or less in a variety of color temperatures to create an inviting atmosphere any time of day.

LED PAR lamps



Philips CorePro LED PAR and MR lamps

Offer efficiency and quality to meet your basic lighting needs.



Philips MasterClass LED ExpertColor PAR lamps

Provide warm, rich light and vivid reds to make fresh food "pop."

TLED lamps



Philips CorePro LED InstantFit Linear lamps

Integrate into traditional fluorescent form factors to upgrade your sales floor and conserve energy.



Philips MasterClass LED InstantFit Linear lamps

Provides consistent light output for quality illumination and are available in plastic for shatter resistance.



Social Gathering

Welcome your shoppers to stay and enjoy your freshly prepared food. Create a relaxing ambiance, inviting your customers to make themselves at home in your store.

Social Gathering

Track luminaires for social gathering applications



Lightolier BoldFlood

Energy efficient with high quality performance and rich color saturation.



3D Printed MS Series

Allow you to choose from a variety of finishes and textures, configured to your specifications.



Lightolier SpotLED

Highly customizable and energy efficient, offering a multi-optic LED design for excellent beam quality and visual performance.

Architectural luminaires



Ledalite

Explore the entire offering of award-winning, inspiring, and innovative indoor lighting solutions that allow specifiers to create a unique vision.



Color Kinetics PureStyle IntelliHue Powercore

Offers high-brightness wall grazing with excellent CRI and color-changing capabilities.



Color Kinetics PureStyle Compact IntelliHue Powercore

Provides glow, backlighting, and wall washing with excellent CRI and color-changing capabilities.

Retrofit solutions

LED A-Shape lamps



Philips CorePro LED A-Shape lamps

Deliver energy savings, minimized maintenance cost and dependable performance, compared to traditional incandescent bulbs, to meet your basic lighting needs.



Philips MasterClass LED A-Shape lamps

Features smooth dimming down to 10% or less in a variety of color temperatures to create an inviting atmosphere any time of day.

LED PAR lamps



Philips CorePro LED PAR and MR lamps

Offer efficiency and quality to meet your basic lighting needs.



Philips MasterClass LED ExpertColor PAR lamps

Provide warm, rich light and vivid reds to make fresh food "pop."



Outdoor

Ensure parking lots and walkways feel secure and well-illuminated. We know that your image is your reputation. Our outdoor offering makes it easy to provide both comfort and performance while making a distinct impression.

Outdoor

Site & Area / Parking Lot luminaires



Stonco Area Light

Pole-mounted fixture delivering value with high energy savings.



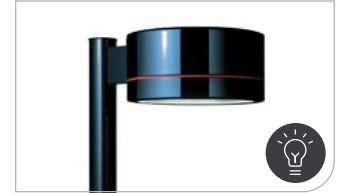
Gardco EcoForm

Combines economy with performance and makes it simple to switch to LED and brighten your parking area.



Gardco PureForm Area

Features a sleek, low profile design and comfort optics to reduce glare and provide peace of mind in parking lots.



Gardco Form Ten Area

Available in both round and square options, the Form Ten Area luminaires are cutoff area luminaires that provide performance excellence and advanced Gardco LED thermal management technology.

Canopy & Parking Garage luminaires



Stonco Garage and Canopy

The go-to durable, cost-effective lighting solution for your parking garages, covered walkways and outdoor canopies.



Gardco G3

Combines excellent performance with value and energy-efficiency, offering a complete selection of optical systems.



Gardco SoftView

Features edge-lit technology, providing visual comfort with minimal glare in your parking garage. An added uplight feature reduces cave effect to provide a sense of security.

Architectural luminaires



Color Kinetics

Delivers indoor and outdoor LED lighting systems in a wide range of types, form factors, and output levels – empowering you to achieve your unique vision.

Outdoor

Wall Pack luminaires



Gardco LytePro Wall Sconce

Helps make sure your customers and employees feel secure in entryways and corridors.



Gardco 121 Wall Sconce

Offers a stylish, powerful optical design, while delivering high light levels and functional distributions for excellent visibility.



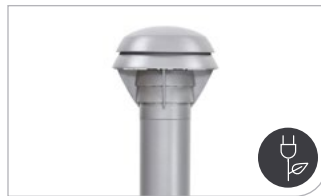
Gardco PureForm PWS Comfort Wall Sconce

Gives customers a clear sight line to your store with its sleek, low profile design and comfort optics.



Stonco Commercial Bollard

Combines classic low-glare pathway illumination and energy-saving LED technology with a tough architectural bronze finish.



Gardco Full Cutoff Bollard BR840

Feature LEDs concealed below cast louvers to provide down lighting for landscape and pathway applications with 4" diameter extruded aluminum shafts.



Gardco PureForm PBL

Integrates a sleek, low profile design, extraordinary light output, and energy savings into an innovative pedestrian scale luminaire with a high performance optical system designed to achieve wide spacings and full cutoff performance.

Retrofit solutions

Wall Pack lamps



Philips CorePro LED Wall Pack Lamps

An ideal HID replacement providing high intensity illumination for added visibility outside of your store.



Philips CorePro LED Corn Cob Lamps

Maximize energy savings with this LED solution at an affordable price.



Philips MasterClass LED TrueForce Corn Cob Lamps

Provides the "perfect fit" with uncompromising efficacy and color quality to keep parking areas brightly lit.

Interact IoT platform is a robust security, scalable, cloud-based Internet of Things (IoT) platform designed to help run your operations sustainably, efficiently and reliably.

interact



Did you know Signify also offers connected lighting options?

Talk to your Signify Sales Representative today to discover the best solution for your store.

Signify Interact Retail helps elevate customer experience and sell more in-store, online and beyond.

For more information on Interact products and solutions please visit: www.interact-lighting.com/en-us/what-is-possible/interact-retail



Indoor Navigation

Fast, convenient and personalized product finding and location based promotions

Stimulate customer loyalty and turnover through proximity marketing, couponing and convenient product finding.

Give shoppers a new experience by directing them to shopping list items and even using handheld devices to locate product.



Data Analytics

Insights into shopper behavior and store optimization through location-based data

Phone location information gathered from the indoor navigation system is stored in the cloud. Retailers can use the anonymized data on shopper

behavior to further optimize and improve the store layout or measure the impact of marketing events and promotions.



Scene Management

Connected lighting that keeps you future-ready

Beautiful, unforgettable light is essential to a great retail experience. Use light recipes and zoning to highlight promotions and customer events, or to tailor areas to specific audiences.

Create stopping power, build your brand, and encourage customer loyalty through lighting color and movement both inside and outside the store.



Support your sustainability goals

Additional energy savings and lower operational costs through multi-site lighting management and scheduling

With Interact Retail Lighting management software, automated schedules ensure light levels match opening hours or can be adjusted to harvest available daylight. Areas of the store that are used very little can remain unlit when

not in use, resulting in energy savings and cost reduction. Energy optimization software lets the store monitor energy usage and provides the insight needed to optimize operations and reduce costs.

Index

General Illumination

Area	Product Type	Level	Suggested Product
Office	Recessed Downlighting solutions	Retrofit	Lightolier Flat Downlight
		Entry	Lightolier EasyLyte
		Performance	Lightolier LyteProfile
		Specification	Lightolier Calculite with IntelliHue technology
	Recessed Troffer lighting solutions	Retrofit	EvoKit Click
		Entry	Day-Brite FluxGrid
		Performance	Day-Brite ClearAppeal
		Specification	Ledalite PureFX
Back of House	Vaportight lighting solutions	Retrofit	Day-Brite VTC Sealed Strip
		Entry	Day-Brite FluxStream Sealed Strip
		Performance	Day-Brite V3W Vaporlume
		Specification	Day-Brite DW Vaporlume Industrial
	High Bay lighting solutions (Round)	Retrofit	Philips LED High Bay Lamps
		Entry	Day-Brite HCY LED High Bay
		Performance	3D Printed PM Series
		Specification	Day-Brite RBX LED High Bay
	High Bay lighting solutions (Rectangular)	Retrofit	Philips LED Master InstantFit HF T5
		Entry	Day-Brite FCY LED High Bay
		Performance	Day-Brite FBY LED High Bay
		Specification	Day-Brite FBX LED High Bay
Germicidal	Germicidal UV-C lighting solutions	Upper Air Disinfection	Alkco UV-C 2x2 Grid Ceiling Mount Alkco UV-C Louvered Wall
		Surface Disinfection	Alkco UV-C Strip Alkco High Bay
		Controls	Philips Dynalite UV-C Control System
		Entrance/Exit	Exit and Emergency lighting solutions
		Performance	Chloride Compac CLX Exit Sign
		Specification	Chloride Edge-Lit 44R Exit Sign
Cash Wrap	Architectural Linear lighting solutions	Retrofit	Philips LED InstantFit Lamps
		Entry	Day-Brite LBX Linear Suspended
		Performance	Ledalite TruGroove Suspended
		Specification	Ledalite FloatPlane Suspended
HBC/Pharmacy and Perimeter	Track lighting solutions	Retrofit	Philips LED PAR Lamps
		Entry	Lightolier BoldFlood
		Performance	3D Printed MS Series
		Specification	Lightolier Spot LED
HBC/Pharmacy	Pendant lighting solutions	Retrofit	Philips LED Bulbs
		Entry	Philips LED PAR and MR Lamps
		Performance	3D Printed Decorative Pendants
		Specification	Lightolier Calculite Cylinder
	Trunking lighting solutions	All	Trunking
Perimeter	Linear	Retrofit	Philips LED InstantFit Lamps
		Entry	Day-Brite SLS LED Linkable Strip
		Performance	Day-Brite FluxStream LED Strip
			Day-Brite FluxSpace
		Specification	Day-Brite LBX LED Linear Suspended

Display and Counter

Area	Product Type	Level	Suggested Product
Bakery	Recessed Troffer lighting solutions	Retrofit	Philips EvoKit
		Entry	Day-Brite FluxGrid
		Performance	Day-Brite ClearAppeal
		Specification	Ledalite PureFX
	Recessed Downlighting solutions	Retrofit	Lightolier Flat Downlight Select
		Entry	Lightolier EasyLyte
		Performance	Lightolier LyteProfile
		Specification	Lightolier Calculite with IntelliHue technology
	Pendant lighting solutions	Retrofit	Philips LED Bulbs
		Entry	Philips LED PAR and MR Lamps
		Performance	3D Printed Decorative Pendants
		Specification	Lightolier Calculite Cylinder
Fresh Produce Sign Lighting, Multi-deck Refrigeration, Reach-in Coolers, and Gondola Aisles	Retail Display lighting solutions	Retrofit	Integrate/PrimeSet/CertaFlux/Fortimo LEDFlex
		Entry	Philips LED Fortimo LEDFlex
		Performance	Philips LED CertaFlux
		Specification	Philips LED InteGrade/PrimeSet
Fresh Produce Sign Lighting, Bread, Cheese, Food Islands, and Reach-in Coolers	Track lighting solutions	Retrofit	Philips LED PAR Lamps
		Entry	Lightolier BoldFlood
		Performance	3D Printed MS Series
		Specification	Lightolier Spot LED
Gondola Aisles	General Purpose Linear lighting solutions	Retrofit	Philips LED InstantFit Lamps
		Entry	Day-Brite SLS LED Linkable Strip
		Performance	Day-Brite FluxStream LED Strip
			Day-Brite FluxSpace
		Specification	Day-Brite LBX LED Linear Suspended

Social Gathering

Area	Product Type	Level	Suggested Product	
Social Gathering	Pendant lighting solutions	Retrofit	Philips LED Bulbs	
			Philips LED PAR and MR Lamps	
		Performance	3D Printed Decorative Pendants	
			Specification	Lightolier Calculite Cylinder
		Track lighting solutions	Retrofit	Philips LED PAR Lamps
			Entry	Lightolier BoldFlood
	Performance		3D Printed MS Series	
	Specification		Lightolier Spot LED	
	UV-C lighting solutions	Upper Air Disinfection	Alkco UV-C 2x2 Grid Ceiling Mount	
			Alkco UV-C Louvered Wall Mount	
		Surface Disinfection	Alkco UV-C Strip	
			Alkco UV-C High Bay	

Outdoor

Area	Product Type	Level	Suggested Product
Office	Wall Packs	Retrofit	Philips CorePro LED Wall Pack Lamps
		Entry	Gardco LytePro Wall Sconce
		Performance	Gardco 121 Wall Sconce
		Specification	Gardco PureForm PWS Wall Sconce
	Site Lighting	Retrofit	Philips Corn Cob lamps
		Entry	Stonco Area Light Select
		Performance	Gardco EcoForm
		Specification	Gardco PureForm Area Gardco Form Ten Area
	Canopy	Entry	Stonco Garage & Canopy DualSelect
		Performance	Garage G3 Parking Garage
		Specification	Gardco SoftView
	Architectural	Indoor	Ledalite
		Indoor/Outdoor	Color Kinetics RGBW



© 2021 Signify Holding. All rights reserved. The information provided herein is subject to change, without notice. Signify does not give any representation or warranty as to the accuracy or completeness of the information included herein and shall not be liable for any action in reliance thereon. The information presented in this document is not intended as any commercial offer and does not form part of any quotation or contract, unless otherwise agreed by Signify.

Signify North America Corporation
200 Franklin Square Drive,
Somerset, NJ 08873
Telephone 855-486-2216

Signify Canada Ltd.
281 Hillmount Road,
Markham, ON, Canada L6C 2S3
Telephone 800-668-9008

All trademarks are owned by Signify Holding or their respective owners.