

Consortium Lead



GCC

Global Conservation
Consortia

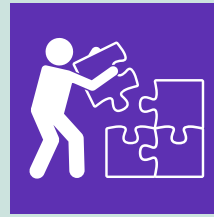
A single institution will be responsible for Consortium coordination, communication, and reporting at the global scale.

The Consortium Lead Activities:

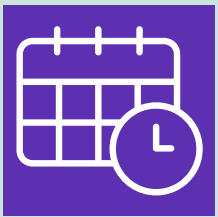
Appoints an individual staff member to serve as Coordinator, main point of contact for the Consortium and Chair of the Consortium Steering Committee (CSC)



Coordinates Consortium activities, including research, conservation projects, and metacollections; tracks and reports such activities to BGCI, the CSC, and on an annual basis



Operates on a 5-year term, renewable pending approval of BGCI and the CSC



Recruits and coordinates the CSC, and facilitates Consortium communications in collaboration with BGCI's GCC Manager



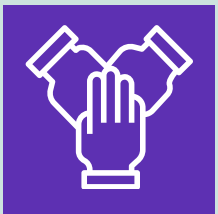
Coordinates meetings of the CSC and regional or local meetings of Consortium participants; communicates and plans in advance of meetings with the BGCI GCC Manager



Maintains a master species checklist and defines priority regions for the Consortium and the CSC



Collaboratively makes decisions regarding strategies and priorities for the Consortium



May lead regional-level operations of the Consortium



Consortium Lead



GCC

Global Conservation
Consortia

The Consortium Lead:

Serves as a Species
Steward for one or
more priority species



Collaboratively leads
and coordinates
fundraising efforts for
Consortium
development,
administration, and
activities



Includes BGCI and
Consortium logos in
published Consortium
materials (e.g.
webpages,
newsletters, reports,
posters and
presentations)



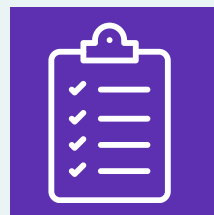
Reviews and approves
Consortium Affiliate use
of GCC logos and
branding for fundraising,
advocacy, outreach, and
promotional purposes



Promotes Consortium
globally and advocates
to policymakers,
funders, the general
public, and others as
appropriate



Tracks and reports
promotional activities to
BGCI, the CSC, and other
stakeholders on an
annual basis



Contact BGCI to express your interest for a new consortium