

# Species Stewards



**GCC**

Global Conservation  
Consortia

Species Stewards of the Global Conservation Consortia are institutions, represented by named individuals, that commit to long-term management of priority species at:

1. Ex situ sites such as at a botanic garden or other collection;
2. Near situ (or similar) conservation sites, such as plantations or reintroduction sites within the natural range of a species; and/or
3. In situ sites where priority threatened species grow as part of the native ecosystem

## About Species Stewards:

Species Stewards may manage priority species at any combination of conservation sites, which constitute a portion of the metacollection for a priority species.



A metacollection is a network of coordinated sites that safeguard genetic diversity for a species.

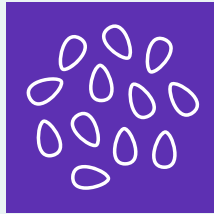
Species Stewards will typically focus efforts on threatened species that have been prioritised by the Consortium.

Sites include but are not limited to, botanic gardens, private collections and/or landholdings, nurseries, parks, universities, indigenous communities' land, government or other managed natural areas, reintroduction sites, seed orchards, and land conservancies.

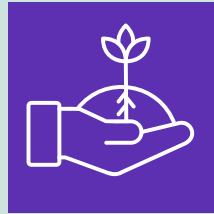


## Activities Supported by Species Stewards:

Acquire and exchange germplasm with prior informed consent, according to all relevant international, national and local laws, regulations and customs



Avoid causing harm to the environment or biodiversity; and ultimately support the long-term conservation of genetically diverse and representative plant populations



Support and utilize germplasm for research, conservation, educational, and other activities, in keeping with the GCC objectives



Track Consortium-related activities, including research, conservation, and metacollection work involving the priority species, and report to BGCI and the CSC on an annual basis



Promote the Consortium and advocate to policymakers, funders, the general public, and others as appropriate; track and report such activities to the CSC on an annual basis



Fill gaps in representation in the metacollection, via inclusion of accessions from across the native range of the species,



Develop and share with Consortium lead propagation protocols for priority species



Consider achieving the ArbNet Arboretum Accreditation, the BGCI institutional Accreditations, and/or other professional accreditations and networks



As appropriate, contribute and maintain up-to-date information in BGCI's GardenSearch, PlantSearch, and Conservation Action Tracker databases, including upload of taxon, accession and specimen data on an annual basis



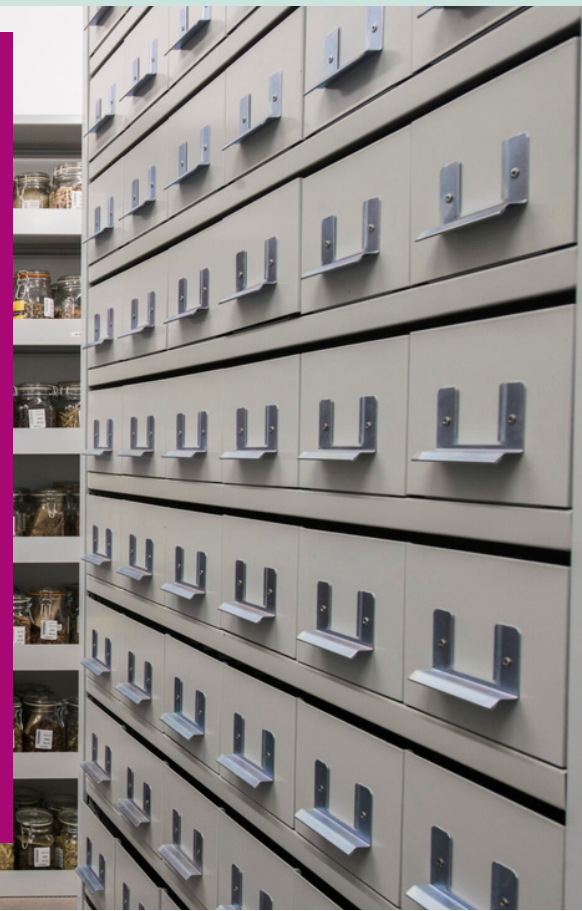
## Activities Supported by Species Stewards:

### For Species Stewards managing in situ populations:

- document, monitor, and protect naturally occurring populations of priority species according to best practices and expert advice, as possible;
- make their site available to other Consortium participants and other affinitive groups to gather data based on the managed natural populations, as possible

### For Species Stewards managing ex situ germplasm/material:

- Record compliance documentation for relevant material acquisitions;
- Document and maintain plants or other viable germplasm and associated information for living accessions and specimens according to best practices in the BGCI Botanic Garden Manual (pgs. 36, 48-64) and expert advice;
- Duplicate and make germplasm available to Consortium participants, proactively, by request, or upon deaccessioning or leaving the Consortium; and maintain and report records of germplasm distribution





Metacollection networks can self-organise and/or identify a **Species Coordinator** to undertake the following activities.

## Activities Supported by Species Stewards:

Compile, coordinate, and report activities among Species Stewards and Affiliates for the priority species

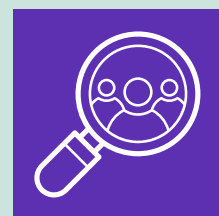


Compile or update the IUCN Red List assessment for the priority species

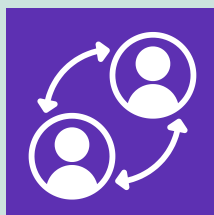


Develop a tailored strategy for building the priority species' ex situ, in situ, and/or near situ (or similar) combined metacollection, that addresses the species' conservation needs

Recruit and support metacollection sites that broadly represent the priority species' natural distribution



Encourage engagement with local and indigenous communities in the region on topics including indigenous and traditional ethnobotanical knowledge



Encourage Species Stewards to contribute updated accession and specimen data for priority species to the CSC and/or BGCI's PlantSearch Pedigree database

Contact the relevant consortium lead to express your interest