

Consortium Steering Committee



GCC
Global Conservation
Consortia

A Consortium Steering Committee (CSC) is composed of ~5-10 individuals and BGCI's GCC Manager

- Chaired by Consortium Lead
- All CSC positions appointed on a voluntary basis for a 5-year, renewable term
- CSC meets at least annually, or more often as needed
- CSC decisions are by consensus, with Consortium Lead casting deciding vote if needed

Each Consortium Steering Committee:

Is responsible for coordination and recruitment of Consortium participants in assigned priority region, ensuring that the work of the Consortium is global in scope, providing broad geographic and institutional representation, focused in areas of high species diversity



Develops Consortium work plan, sets goals, provides strategic advice on planning, funding, and implementation of activities, and monitors progress against Consortium objectives

Works with taxonomic experts and others as appropriate to assign each species to an operational region

Recruits, reviews and approves new Species Stewards

Steering Committee Members



For their specific region, Steering Committee Members may:

Coordinate Consortium activities, including research, conservation projects, and metacollections; track and report such activities to BGCI, the CSC, and other stakeholders on an annual basis



Identify the species of conservation priority, with expert input as needed

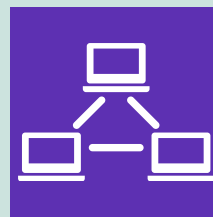


Recruit one or more Species Steward for each priority species in the region

Encourage associated institutions to consider achieving the ArbNet Arboretum Accreditation, the BGCI Accreditations, and other professional accreditations and networks



Encourage associated institutions to contribute and annually update information in BGCI's GardenSearch and PlantSearch databases, including upload of a taxa list on an annual basis

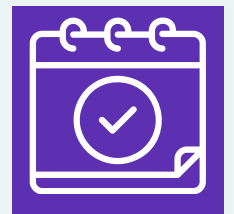


Encourage associated institutions to contribute conservation actions to BGCI's Conservation Action tracker



Serve as a Species Steward for one or more priority species

Ensure all species in the region have up-to-date IUCN Red List assessments (i.e. assessed within the last 10 years)



Consortium Lead institutions lead and catalyses conservation efforts across all geographic regions where the target plant group occurs

Consortium Steering Committee (CSC)



For their specific region, Steering Committee Members may:

Coordinate regional Consortium meetings opportunistically and as required

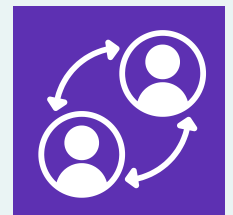


Facilitate and support research efforts (e.g. taxonomy, population genetics, etc.) in collaboration with the region's Species Stewards and Affiliates as possible and appropriate

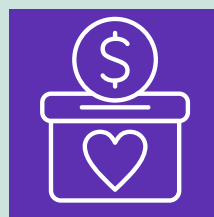


Undertake and support *in situ* conservation projects in collaboration with the region's Species Stewards and Affiliates as possible and appropriate

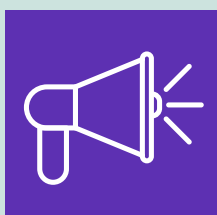
Encourage engagement with local and indigenous communities in the region on topics including indigenous and traditional ethnobotanical knowledge



Work with existing local, regional and national plant conservation networks and accreditation schemes, building on collective conservation efforts



Fundraise to support Consortium activities, including building capacity to empower Species Stewards, especially in areas of high species diversity



Promote Consortium regionally and advocate to policymakers, funders, the general public, and others as appropriate

Track and report promotional activities to BGCI, the CSC, and other stakeholders on an annual basis



By invitation only, contact the relevant consortium lead