

Information Display Catalog

2023 / 2024



Shape Immersive Moments. Share Innovative Experience.



* All images used are for illustrative purposes only.
* All images are intended to help you understand, and there may be some differences in practical use.
* All specifications are based on the largest size of the model unless noted separately. Detailed specifications may vary depending on inches.
* Some specifications are simplified. Please refer to www.lg-informationdisplay.com for details.

Absolute Color Vividness on Ultra HD Display.

Vibrant colors and powerful performance bring content to life, effectively capturing the attention of passersby, driving traffic to the display's location.



UHD Standard Signage

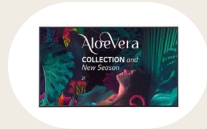
UH7J

65, 55, 49, 43"



UH5N

65, 55, 49, 43"



UH5J

98, 86, 75, 65, 55, 49, 43"



UM5K

110, 98"



UM5N

65, 55, 49, 43"



UL3J

86, 75, 65, 55, 50, 43"



UN640S

86, 75, 65, 55, 50, 43"



Resolution	3840 × 2160 (4K UHD)	3840 × 2160 (4K UHD)	3840 × 2160 (4K UHD)
Brightness	700 nits	500 nits	500 nits
Panel	IPS	IPS	IPS
Life (Minimum)	50000 Hrs	50000 Hrs	50000 Hrs
Operation Hours	24 Hours / 7 Days	24 Hours / 7 Days	24 Hours / 7 Days
Haze	28%	28%	28%
IP Rating	IP5X	IP5X	IP5X
Refresh Rate	60 Hz	60 Hz	60 Hz
Wi-Fi	Built-In Wi-Fi	Built-In Wi-Fi	Built-In Wi-Fi
Audio	Built-In Speaker	Built-In Speaker	Built-In Speaker
Compatibility	Crestron	Cisco, Crestron	Crestron
Input	LAN, HDMI×2, USB-C, DP, DVI, USB, Audio	LAN, HDMI×3, DP, USB	LAN, HDMI×3, DP, DVI, IR, USB, Audio

Features	High Brightness / webOS Smart Platform / Mobile Content Management / Meeting Room Solution	webOS Smart Platform / Design for Space Utilization / Enhanced Security / SuperSign Solutions / Extra Thin Display	webOS Smart Platform / Mobile Content Management / Meeting Room Solution
-----------------	--	--	--

Resolution	3840 × 2160 (4K UHD)	3840 × 2160 (4K UHD)	3840 × 2160 (4K UHD)	3840 × 2160 (4K UHD)
Brightness	500 nits	500 nits	330 nits (65" 55" 50" 400 nits / 43" 300 nits)	330 nits (65" 55" 50" 400 nits / 43" 300 nits)
Panel	ADS	IPS	IPS (55" 43" ADS / 50" VA)	Various
Life (Minimum)	50000 Hrs	50000 Hrs	30000 Hrs	30000 Hrs
Operation Hours	16 Hours / 7 Days	24 Hours / 7 Days	16 Hours / 7 Days	16 Hours / 7 Days
Haze	1%, (98" 25%)	28%	3% (75" 65" 55" 50" 43" 1%)	-
IP Rating	-	IP5X	-	-
Refresh Rate	120 Hz, (98" 60 Hz)	60 Hz	120 Hz (75" 65" 55" 50" 43" 60 Hz)	60 Hz
Wi-Fi	Built-In Wi-Fi	Built-In Wi-Fi	Built-In Wi-Fi	Built-In Wi-Fi
Audio	Built-In Speaker	Built-In Speaker	Built-In Speaker	Built-In Speaker
Compatibility	Cisco, Crestron	Cisco, Crestron	Cisco, Crestron	Cisco, Crestron
Input	LAN, HDMI×3, DP, DVI, IR, USB, Audio	LAN, HDMI×3, DP, IR, USB	LAN, HDMI×3, USB×2	LAN, HDMI×3, USB, TV

Features	webOS Smart Platform / Mobile Content Management / Meeting Room Solution / SuperSign Solutions	webOS Smart Platform / Design for Space Utilization / Enhanced Security / SuperSign Solutions	Sophisticated Slim Design / webOS Smart Platform / Various Sensor Connection / Compatible with LG One:Quick Share / Mobile Content Management / Meeting Room Solution	webOS Smart Platform / Embedded Content & Group Management / Versatile Content Management with LG SuperSign CMS / Mobile Content Management / Meeting Room Solution
-----------------	--	---	---	---

Life's Good.

A Broad Range of Offers for Diverse Customer Values.

Easily installed in any venues, LG digital signage plays an integral role in customer engagement and spatial enhancement.



FHD Signage Models

SM5J

32"



SM3G

22"



LT340C

32"



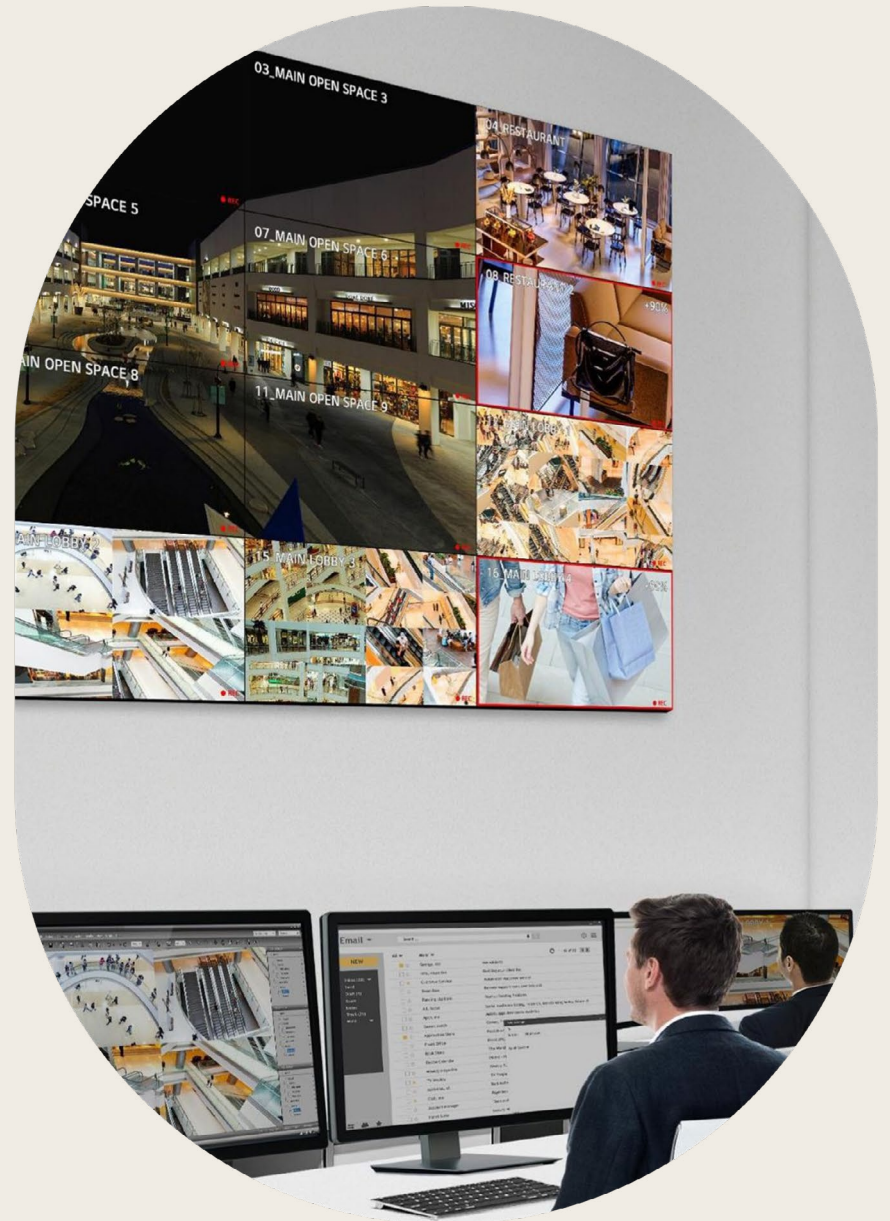
Commercial TV

Resolution	1920 × 1080 (Full HD)	1920 × 1080 (Full HD)	1366 × 768 (HD)
Brightness	400 nits	250 nits	240 nits
Panel	IPS	IPS	Various
Life (Minimum)	30000 Hrs	30000 Hrs	30000 Hrs
Operation Hours	24 / 7	16 / 7	16 / 7
Haze	1%	25%	-
IP Rating	-	-	-
Refresh Rate	60 Hz	60 Hz	-
Wi-Fi	Built-In Wi-Fi	Built-In Wi-Fi	N/A
Audio	Built-In Speaker	Built-In Speaker	Built-In Speaker
Compatibility	Crestron	Crestron	Crestron
Input	LAN, HDMI×3, DP, IR, USB	LAN, HDMI×2, IR, USB, Audio	LAN, HDMI×2, RF×2, D-sub, AV, USB

Life's Good.

Artistic Immersion, Overwhelming- ing Captivation.

Seamlessly assembled on a large video wall screen, the impressive immersion generated by LG's extremely narrow bezel provides an extraordinary viewing experience.



Video Wall Models

VSH7J

55"



0.44mm Even Bezel

VSM5J

55"



0.44mm Even Bezel

VH7J

55"



1.74mm Bezel

VM5J

55"



1.74mm Bezel

VL5PJ

55"



3.5mm Bezel

VL5G

49"



3.5mm Bezel

Resolution	1920 × 1080 (Full HD)	1920 × 1080 (Full HD)	1920 × 1080 (Full HD)
Brightness	700 nits	500 nits	700 nits
Panel	IPS	IPS	IPS
Life (Minimum)	50000 Hrs	50000 Hrs	50000 Hrs
Operation Hours	24 / 7	24 / 7	24 / 7
Haze	28%	28%	28%
IP Rating	IP5X	IP5X	IP5X
Refresh Rate	60 Hz	60 Hz	60 Hz
Wi-Fi	N/A	N/A	N/A
Audio	N/A	N/A	N/A
Compatibility	Crestron	Crestron	Crestron
Input	LAN, HDMI×2, DP, DVI, IR, USB, Audio	LAN, HDMI×2, DP, DVI, IR, USB, Audio	LAN, HDMI×2, DP, DVI, IR, USB, Audio
Features	Ultra-Narrow Bezel / Wider Viewing Angle / Easy Color Adjustment / Efficient Operation	Ultra-Narrow Bezel / Wider Viewing Angle / Easy Color Adjustment / Efficient Operation	Extreme-Narrow Bezel / Wider Viewing Angle / Easy Color Adjustment / Efficient Operation

Resolution	1920 × 1080 (Full HD)	1920 × 1080 (Full HD)	1920 × 1080 (Full HD)
Brightness	500 nits	500 nits	500 nits
Panel	IPS	IPS	IPS
Life (Minimum)	50000 Hrs	50000 Hrs	60000 Hrs
Operation Hours	24 / 7	24 / 7	24 / 7
Haze	28%	3%	3%
IP Rating	IP5X	IP5X	
Refresh Rate	60 Hz	60 Hz	60 Hz
Wi-Fi	N/A	N/A	N/A
Audio	N/A	N/A	N/A
Compatibility	Crestron	Crestron	Crestron
Input	LAN, HDMI×2, DP, DVI, IR, USB, Audio	LAN, HDMI×2, DP, DVI, IR, USB, Audio	LAN, HDMI×2, DP, DVI, IR, USB, Audio
Features	Extreme-Narrow Bezel / Wider Viewing Angle / Easy Color Adjustment / Efficient Operation	Ultra-Narrow Bezel / Easy Color Adjustment / Efficient Operation	Ultra-Narrow Bezel / Wider Viewing Angle / Easy Color Adjustment / Efficient Operation

Life's Good.

Space Fitting Design for Effective Advertising.

The unique bar-type displays are ideal for showing vertical or horizontal objects without truncation or compound content composed of video and text. Placed on pillars or any long structures, they provide an extraordinary viewing experience.



Stretch Signage Models

BH5F

86"



Ultra Stretch Signage / 0.44mm Even Bezel

Resolution	3840 × 600
Brightness	500 nits
Panel	IPS
Life (Minimum)	50000 Hrs
Operation Hours	24 / 7
Haze	3%
IP Rating	IP5X
Refresh Rate	60 Hz
Wi-Fi	N/A
Audio	N/A
Compatibility	Crestron
Input	LAN, HDMI×3, DP, DVI, IR, USB×2, Audio
Features	58:9 Wide Screen / High-Quality Picture / Effective Content Delivery

Life's Good.

LG One:Quick

LG One:Quick Series

Enjoy One:derful Life.

One:Quick Works
One:Quick Flex
One:Quick Share



Interactive Digital Board

Smart Collaboration Beyond Touch Experience.

The LG Interactive Digital Board (IDB) boosts meeting productivity by encouraging participants to freely share their ideas on the screen using intuitive touch and embedded collaboration solutions.



Interactive Digital Board Models

TR3DK

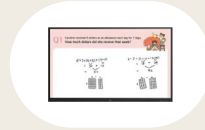
86" 75" 65"



Interactive Whiteboard

TR3DJ

86" 75" 65"



LG CreateBoard

Resolution	3840 × 2160 (4K UHD)	3840 × 2160 (4K UHD)
Brightness	350 nits (w/ glass)	350 nits (w/ glass)
Panel	IPS	IPS
Life (Minimum)	30000 Hrs	30000 Hrs
Operation Hours	16 / 7	16 / 7
Haze	28%	-
IP Rating	-	-
Refresh Rate	60 Hz	60 Hz
Wi-Fi	Built-In Wi-Fi	Built-In Wi-Fi
Audio	Built-In Speaker	Built-In Speaker
Compatibility	-	-
Input	LAN, HDMI×3, USB-C (PD), VGA, USB×5, Audio	LAN, HDMI×3, VGA, USB×5, Audio
Features	Genuine Touch & Writing Experience / Easy Connection & Sharing / User Friendly Experience / Security & Compatibility / Remote-Control Services	Smooth Touch & Writing Experience / Easy Connection & Sharing / User Friendly Experience / Security & Compatibility / Remote-Control Services

Life's Good.

High Brightness

Outstanding Visibility with Reliable Performance.

With superior picture quality and excellent durability, the display's eye-catching content will captivate customers even under direct sunlight or extreme environmental fluctuations.



High Brightness Models

XS4G

75"



Windows Facing

XS4J

55" 49"



Windows Facing

XE4F

55" 49"



IP-Rated Outdoor

XE1J

22"



IP-Rated Outdoor

XF3C

75"



Open-frame

XF3E

55" 49"



Open-frame

Resolution	3840 × 2160 (4K UHD)	1920 × 1080 (Full HD)	1920 × 1080 (Full HD)
Brightness	4000 nits	4000 nits	4000 nits
Panel	IPS, M+ (WRGB)	IPS, M+ (WRGB)	IPS, M+ (WRGB)
Life (Minimum)	50000 Hrs	50000 Hrs	50000 Hrs
Operation Hours	24 / 7	24 / 7	24 / 7
Haze	3%	3%	3%
IP Rating	-	-	IP56
Refresh Rate	60 Hz	60 Hz	60 Hz
Wi-Fi	Built-In Wi-Fi	Built-In Wi-Fi	N/A
Audio	N/A	N/A	N/A
Compatibility	-	-	-
Input	LAN, HDMI×2, DP, USB, IR	LAN, HDMI×2, DP, USB, IR	LAN, HDMI×2, DP, USB×2, HDBaseT
Features	High Brightness (Outdoor) / Direct Sunlight / Visible with Polarized Sunglasses / Double-Sided Availability / webOS Smart Platform	High Brightness (Outdoor) / Direct Sunlight / Visible with Polarized Sunglasses / Slim Bezel / webOS Smart Platform / Web-Based Auto Brightness Sensor	High Brightness (Outdoor) / Direct Sunlight / Visible with Polarized Sunglasses / Slim & Light Design / Dust + Water Proof / IK10 Protective Glass / Easy Data Control & Maintenance

Resolution	1920 × 1080 (Full HD)	3840 × 2160 (4K UHD)	1920 × 1080 (Full HD)
Brightness	1500 nits (w/ glass)	3000 nits	3000 nits
Panel	AHVA-IPS	IPS, M+ (WRGB)	IPS, M+ (WRGB)
Life (Minimum)	50000 Hrs	50000 Hrs	50000 Hrs
Operation Hours	24 / 7	24 / 7	24 / 7
Haze	25%	3%	3%
IP Rating	IP56	-	-
Refresh Rate	60 Hz	60 Hz	60 Hz
Wi-Fi	Built-In Wi-Fi	Wi-Fi Dongle	Wi-Fi Dongle
Audio	N/A	N/A	N/A
Compatibility	-	-	-
Input	LAN, HDMI, USB	LAN, HDMI×2, DP, DVI, IR, USB, SD Card, Audio	LAN, HDMI×2, DP, DVI, IR, USB
Features	High Brightness (Outdoor) / Direct Sunlight / Visible with Polarized Sunglasses / webOS Smart Platform / Versatile Display Size / Dust + Water Proof / Web-Based Auto Brightness Sensor	High Brightness (Outdoor) / Direct Sunlight / Visible with Polarized Sunglasses / webOS Smart Platform	High Brightness (Outdoor) / Direct Sunlight / Visible with Polarized Sunglasses / webOS Smart Platform

Life's Good.

OLED Signage

Artistic Space Beyond Display.

Beyond its informative features, LG OLED signage delivers unsurpassed advertising effectiveness, redesigning space as a prestige-enhancing landmark with perfect colors and innovative forms.



OLED Models

EW5TK

55"



Transparent OLED Touch

EW5G

55"



Transparent OLED

EP5G

65"



OLED Pro Monitor



EJ5G

55"



Flat OLED

EF5K-L

55"



Curvable Open Frame

EF5K-P

55"



Curvable Open Frame

Resolution	1920 × 1080 (Full HD)	1920 × 1080 (Full HD)	3840 × 2160 (4K UHD)
Brightness	150 / 400 nits (APL 100% / 25%, Without Glass)	150 / 400 nits (APL 100% / 25%, Without Glass)	1000 / 900 / 500 / 180 nits (APL 3% / 10% / 25% / 100%)
Panel	OLED	OLED	OLED
Life (Minimum)	30000 Hrs	30000 Hrs	30000 Hrs
Operation Hours	18 / 7 (Moving Content Only)	18 / 7 (Moving Content Only)	12 / 7 (Moving Content Only)
Haze	Hard Coating	Hard Coating	-
IP Rating	-	-	-
Refresh Rate	120 Hz	120 Hz	120 Hz
Wi-Fi	N/A	N/A	N/A
Audio	N/A	N/A	N/A
Compatibility	Crestron	Crestron	
Input	LAN, HDMI, DP, IR, USB	LAN, HDMI, DP, IR, USB	LAN, HDMI×2, SDI×4, SFP+,
Features	Astonishing Transparency / Intuitive P-Cap Touch Screen / Color with Great Depth / Expandable Design / Protective Tempered Glass	Astonishing Transparency / Color with Great Depth / Expandable Design / Protective Tempered Glass	Accurate Color / Maximum Local Contrast / Hardware-Level Calibration / Advanced Video Format (HDR 10, HLG, etc.)

Resolution	1920 × 1080 (Full HD)	1920 × 1080 (Full HD)	1920 × 1080 (Full HD)
Brightness	150 / 400 nits (APL 100%/25%)	150 / 400 nits (APL 100% / 25%)	150 / 400 nits (APL 100% / 25%)
Panel	OLED	OLED	OLED
Life (Minimum)	30000 Hrs	30000 Hrs	30000 Hrs
Operation Hours	18 / 7 (Moving Content Only)	18 / 7 (Moving Content Only)	18 / 7 (Moving Content Only)
Haze	Hard Coating	Hard Coating	Hard Coating
IP Rating	-	-	-
Refresh Rate	120 Hz	120 Hz	120 Hz
Wi-Fi	N/A	N/A	N/A
Audio	N/A	N/A	N/A
Compatibility	Crestron	Crestron	Crestron
Input	LAN, HDMI, DP, IR, USB	LAN, HDMI, DP, DVI, IR, USB×2	LAN, HDMI, DP, DVI, IR, USB×2
Features	OLED-Quality Picture / Ultra Thin Sophisticated Design / Single Screen or Tiled Expansion	OLED-Quality Picture / Space-Fitting Design / On-Site Customization / Synced Playback	OLED-Quality Picture / Space-Fitting Design / On-Site Customization / Synced Playback

Offers Various Designs & Great Visual Effects Through High Durability.

LG boasts unprecedented visual performance and stability by expanding its industry-leading display technology to LED signage. LG also has a variety of lineups to offer customized solutions in the indoor/outdoor environment.



LED Models

LSAB

P0.78 P0.9 P1.25
Pixel Pitch (mm)



MAGNIT

LAAA

P1.56
Pixel Pitch (mm)



MAGNIT All-in-One

LAED

171"



All-in-One

LAEC

163" 136"



All-in-One

LSCB

P1.25
Pixel Pitch (mm)



Indoor LED

LSBE

P1.56 P1.88 P2.50
Pixel Pitch (mm)



Indoor LED

Resolution	(per cabinet) P0.78: 768 × 432 / P0.9: 640 × 360 / P1.25: 480 × 270	1920 × 1080 (Full HD)	2560 × 1080 (WFHD)	1920 × 1080 (Full HD)	(per cabinet) 480 × 270	(per cabinet) P1.56: 384 × 216 / P1.88: 320 × 180 / P2.50: 240 × 135	
Brightness	P0.78: 1000 (peak), 500 nits / P0.9: 1200 (peak), 600 nits / P1.25: 1600 (peak), 800 nits	1000 (peak), 500 nits	500 nits (Max)	500 nits (Max)	800 nits (Max)	600 nits (Max)	
Panel	Micro LED	Micro LED	LED	LED	LED	LED	
Life (Minimum)	Up to 100000 Hrs (Half-Brightness)	Up to 100000 Hrs (Half-Brightness)	Up to 100000 Hrs (Half-Brightness)	Up to 100000 Hrs (Half-Brightness)	Up to 100000 Hrs (Half-Brightness)	Up to 100000 Hrs (Half-Brightness)	
Operation Hours	-	24 / 7	24 / 7	24 / 7	-	-	
Haze	IP50 (Front) / IP20 (Rear)	-	-	-	IP30 (Front) / IP30 (Rear)	IP50 (Front) / IP50 (Rear)	
IP Rating	50 / 60 Hz (Frame)	IP50 (Front) / IP20 (Rear)	IP30 (Front) / IP20 (Rear)	IP30 (Front) / IP20 (Rear)	50 / 60 Hz (Frame)	50 / 60 Hz (Frame)	
Refresh Rate	Built-In Wi-Fi	50 / 60 Hz (Frame)	50 / 60 Hz (Frame)	50 / 60 Hz (Frame)	N/A	N/A	
Wi-Fi	N/A	Built-In Wi-Fi	N/A	Built-In Wi-Fi	N/A	N/A	
Audio	Crestron	2 Ch (10W+10W)	2 Ch (9W+9W)	2 Ch (9W+9W)	-	-	
Compatibility	(Controller) LAN, HDMI, DP	Crestron	Crestron	Crestron	(Controller) LAN, HDMI, DP, OPS, USB	(Controller) LAN, HDMI, DP, OPS, USB	
Input	LAN, HDMI×2, DP, USB, IR	LAN, HDMI×3, DP, IR, USB	LAN, HDMI×3, DP, IR, USB	LAN, HDMI×3, DP, IR, USB	LAN, HDMI, USB	LAN, HDMI×2, DP, DVI, IR, USB, SD Card, Audio	
Features	Accurate Color / High Brightness / Intelligent Processor / Cable-Less Concept / Easy Installation + Maintenance / P0.78, P0.9: Front and Rear Serviceability / P1.25: Front Service	All-in-One LED Screen / Accurate Color / Achieving Deep Black / Intelligent Processor / Compatible with LG One:Quick Share / Easy Installation + Maintenance / Front Service	All-in-One LED Screen / 21:9 Aspect Ratio / Dedicated Accessories / Easy Installation + Maintenance / Front Service	All-in-One LED Screen / Dedicated Accessories / Compatible with LG One:Quick Share / Easy Installation + Maintenance / Front Service	All-in-One LED Screen / Ultra Slim Depth / 90° Corner Design Available / User-Specific Customization / Compatibility with LG Software Solutions / Easy Installation + Maintenance / Front Service	Accurate Color / Compatibility with LG Software Solutions / Easy Installation + Maintenance / Front Service	Accurate Color / Compatibility with LG Software Solutions / Easy Installation + Maintenance / Front Service

Life's Good.

LED Models

GSCA

P3.91 P4.63
Pixel Pitch (mm)



Outdoor LED

GSCD

P6.94 P10.41
Pixel Pitch (mm)



Outdoor LED

LTAK

P14.00
Pixel Pitch (mm)



Transparent LED Film

ST-1362FH



Stand for All-in-One

Resolution	(per cabinet) P3.91: 128 × 256 or 128 × 128 (Half-Sized) / P4.63: 108 × 216 or 108 × 108 (Half-Sized)	(per cabinet) P6.94: 144 × 144 or 144 × 72 (Half-Sized) / P10.41: 96 × 96 or 96 × 48 (Half-Sized)
Brightness	5000 nits (Min)	5000 nits (Max)
Panel	LED	LED
Life (Minimum)	Up to 100000 Hrs (Half-Brightness)	Up to 100000 Hrs (Half-Brightness)
Operation Hours	-	-
Haze	-	-
IP Rating	IP65 (Front) / IP65 (Rear)	IP65 (Front) / IP65 (Rear)
Refresh Rate	50 / 60 Hz (Frame)	50 / 60 Hz (Frame)
Wi-Fi	N/A	N/A
Audio	N/A	N/A
Compatibility	-	-
Input	(Controller) LAN, HDMI, DP, OPS, USB	(Controller) LAN, HDMI, DP, OPS, USB
Features	High Brightness (Outdoor) / Half-Size Options / 90° Corner Design Available / IP Rated Weatherproof Design / Easy Installation + Maintenance / Compatibility with LG Software Solutions / Front or Rear Serviceability	High Brightness (Outdoor) / Half-Size Options / Lightweight Design / 90° Corner Design Available / IP Rated Weatherproof Design / Easy Installation + Maintenance / Compatibility with LG Software Solutions / Front or Rear Serviceability

Resolution	(per cabinet) 48 × 36	-
Brightness	4000 nits	-
Panel	LED	-
Life (Minimum)	-	-
Operation Hours	24 / 7	-
Haze	-	-
IP Rating	-	-
Refresh Rate	-	-
Wi-Fi	N/A	-
Audio	N/A	-
Compatibility	-	-
Input	(Controller) LAN, HDMI, DP, DVI, IR, USB	-
Features	Splendid Atmosphere / Superb Transparency / Self Adhesive / Easy Expandability / Enhanced Brightness / Compatibility with LG Software Solutions	The ST-1362FH is a motorized stand for 136" All-in-One LED designed for indoor applications.

webOS serves as a Partner to make your Business Thrive.

webOS is a web-based multipurpose platform in which a variety of web applications are deployed and implemented. It helps digital signage maximize interaction with customers by going beyond its conventional function of advertisement and information delivery.



Built-in Player

Powered by high-performance SoCs, it plays content with superb video graphic performance, without the need for a PC. Eliminating the need to purchase peripherals and extra cost for maintenance makes installation simpler and reduces the TCO.



Web-Centric

Using the most common web programming languages, including HTML, JavaScript, and CSS offers familiarity when creating and adapting your applications for the webOS platform.



Simple Customization

Free from any constraints, you can simply add interactive applications or external sensors to webOS signage for a higher level of customer engagement.



Secured Communication

webOS ensures reliable communication between displays and web/data servers by supporting HTTPS and proxy servers.



Content Management

webOS offers an embedded content management system equipped with an intuitive GUI, meaning that first-time users won't have to go through a complicated learning process to manage their displays.

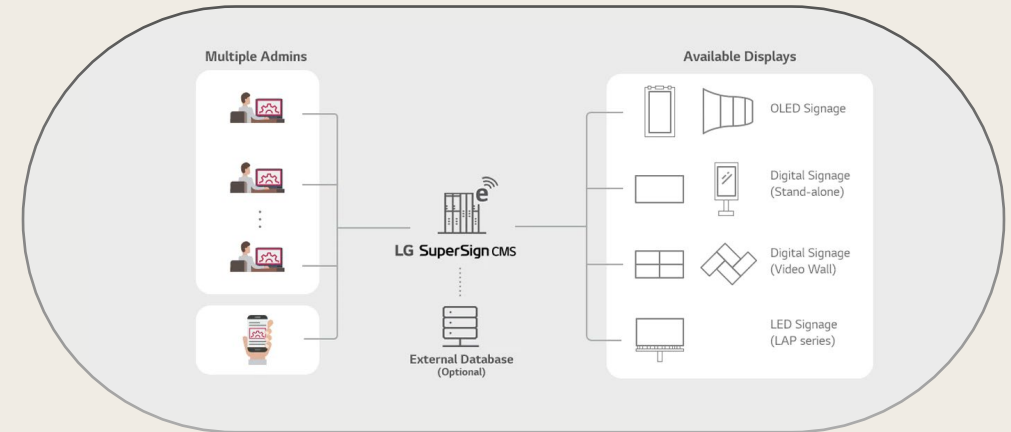


Monitoring and Control

Users can control and monitor the status of multiple displays in different locations in real-time, which is also available on internet-connected mobile devices, allowing you to rapidly respond to emergent situations.

Versatile Content Management with Enhanced Usability.

SuperSign CMS is a content management software solution optimized for LG webOS signage. It supports multiple displays and accounts, is able to be linked to external databases, and allows server access from mobile devices. With its simple and intuitive menus and layout options, SuperSign CMS enhances efficiency for content creation and editing, scheduling and distribution. Users can easily configure brightness, and volume settings to follow a pre-determined schedule, as well as swap between schedules with the multi-channel content scheduling feature which stores content beforehand.



Optimized CMS based on webOS

More powerful, and advanced CMS functionality with WebOS



Easy Creation and Distribution

It enables users to make and publish customized content easily



Efficient Operation of Chains

A seamless management tool for stores with multiple displays



Ease of Account Management

Content group, and related admin options, for better management

Real Time Monitoring and Fault Detection.

LG ConnectedCare is a cloud service solution for remotely managing the operating status of signage displays installed in client workplaces. Through this service, causes of the fault can be easily identified prior to onsite visit, which leads to less time and cost for troubleshooting, ensuring the stable operation of a client's business.



Always Prepared

Direct monitoring and remote diagnosis by LG customer service, partner, or in-house IT department



Virtual Network Computing

Controlling with VNC and Remote UI (Virtual Remote)



Non-contact Management

Not necessary to visit / Visit-less / Visit prepared. Safer and more efficient management is possible.

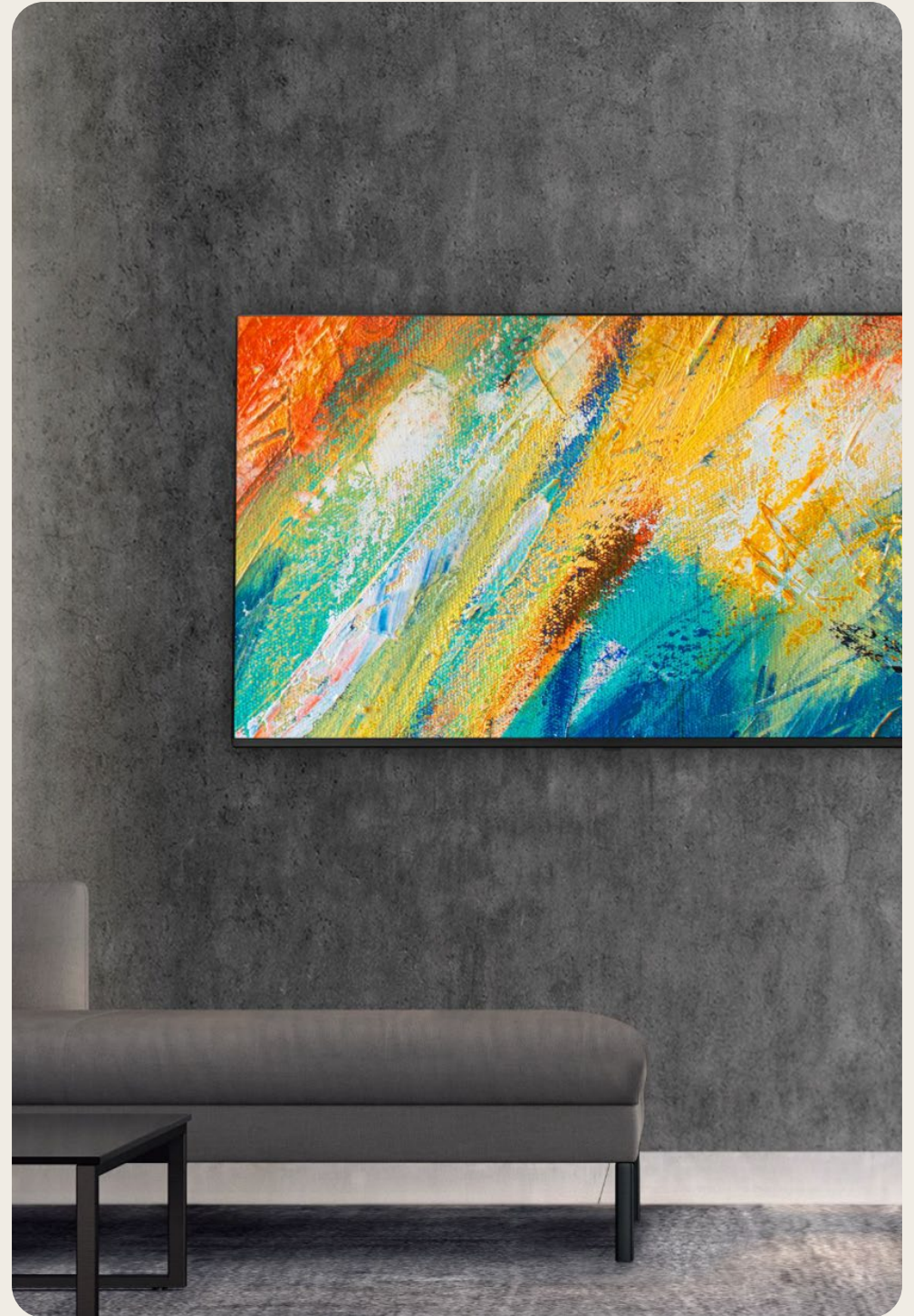


One Solution

Real time monitoring for all devices provided by one solution

Hospitality TV

**True Partner
of the
Hospitality
Industry with
Unrivaled
Technology.**



Pro:Centric SMART

A Premium Smart Solution via IP & RF Network.

Pro:Centric SMART is optimized for customizing hospitality services for hotel brands and guests through an IP & RF infrastructure. With its high picture quality, sophisticated design and advanced connectivity functions, it upscales in-room entertainment and increases convenience through implementation of high-end technology.



Pro:Centric SMART Models

WS960H

65" 55"



SMART OLED

AN960H

65" 55" 48"



SMART OLED

UR781C

86" 75" 65" 55" 50" 43"



SMART

LN661H

32" 28" 24"



SMART

Resolution	3840 × 2160 (4K UHD)	3840 × 2160 (4K UHD)
Brightness	500 nits	-
Wi-Fi	Built-In Wi-Fi	Built-In Wi-Fi
Audio	2.2 Ch (20W+20W)	2 Ch (10W+10W)
Input	LAN, HDMI×3, TV, AV, RJ12, USB×2, Audio	LAN, HDMI×3, TV, USB×3
Features	OLED-quality picture / Pro:Centric Solutions (Content Management) / Voice Recognition / webOS	OLED-quality picture / Pro:Centric Solutions (Content Management) / Voice Recognition / webOS

Resolution	3840 × 2160 (4K UHD)	1366 × 768 (HD)
Brightness	280 nits (65" 55" 50" 300 nits / 43" 270 nits)	-
Wi-Fi	Built-In Wi-Fi	Built-In Wi-Fi
Audio	2 Ch (10W+10W)	2 Ch (5W+5W)
Input	LAN, HDMI×3, TV, USB×3	LAN, HDMI×2, TV, AV, USB
Features	HDR Gaming Experience (HGIG) / Game Optimizer / Pro:Centric Solutions (Content Management)	Pro:Centric Solutions (Content Management)

Life's Good.

Comprehensive Hospitality Solution via IP Network.

Pro:Centric Direct offers editing tools that make it easy to perform service and IP network-based remote management. The Pro:Centric Direct solution enables users to edit their interface & provides customized interface to efficiently manages in-room TVs. The current PCD version provides IoT-based in-room control as well as voice control function through LG Natural Language Processing (NLP).



Pro:Centric DIRECT Models

UR762H

75" 65" 55" 50" 43"



Pro:Centric DIRECT NanoCell

UM662H

75" 65" 55" 50" 43"



Pro:Centric DIRECT

Resolution	3840 × 2160 (4K UHD)	3840 × 2160 (4K UHD)
Brightness	330 nits	330 nits
Wi-Fi	Built-In Wi-Fi	Built-In Wi-Fi
Audio	2 Ch (10W+10W)	2 Ch (10W+10W)
Input	LAN, HDMI×3, TV, RJ12, USB, Audio	LAN, HDMI×3, TV, USB×2
Features	Pro:Centric Solutions (Content Management) / Wireless Hotspot / Voice Recognition / webOS	Pro:Centric Solutions (Content Management) / Wireless Hotspot / Voice Recognition / Game Optimizer

Life's Good.

Enjoy Seamless and Smart TV with Pro:Centric Set Top Box



Peripheral & Service



STB-6500

Pro:Centric Smart IPTV Platform



Pro:Centric Cloud

Introducing cloud-based solutions for integrated management, helping hotels customize their content and deliver intuitive, interactive services to clients. Thanks to LG's Pro:Centric Cloud technology, hotels are a home away from home.



Pro:Centric Direct

Supported by simple editing tools, this hotel content management system provides a one-click service and IP network-based remote management solutions.



Read more on the web

Pro:Centric Cloud and Pro:Centric Direct

Life's Good.

Desktop Monitor

Upgrade
your
Work
Environments.



UHD Models

27UP550P-W



27UP85NP-W



27UQ85R-W



32UQ85R-W



Panel	4K IPS	4K IPS
Brightness	300 nits	400 nits
HDR	HDR 10	HDR 400
Color Coverage	sRGB 98%	DCI-P3 95%
Power Delivery	USB-C 90W PD	USB-C 90W PD
Features	Pivot, tilt, height adjustable	Pivot, tilt height

Panel	4K Nano-IPS	4K Nano-IPS
Brightness	400 nits	400 nits
HDR	HDR 400	HDR 400
Color Coverage	DCI-P3 98%	DCI-P3 98%
Power Delivery	USB-C 90W PD	USB-C 90W PD
Features	Pivot, tilt, height / Speakers / Self Calibration Sensor	Pivot, tilt, height / Speakers / Self Calibration Sensor

Life's Good.

FHD Models

27MP450P-B



Panel	FHD IPS
Brightness	250 nits
Features	Tilt, height

Life's Good.

UltraWide™ Models

34WR50QC-B



34WQ75C-B



34WP85CN-B



Screen	Curved	Curved	Curved
Panel	WQHD VA	WQHD IPS	WQHD IPS
Brightness	300 nits	300 nits	300 nits
HDR	HDR 10	HDR 10	HDR 10
Color Coverage	sRGB 99%	sRGB 99%	DCI-P3 95%
Power Delivery	-	USB-C 90W PD	USB-C 90W PD
Features	Tilt adjustable	Tilt, height / Speakers / LAN	Tilt, height / Speakers

34WK95UP-W



38WN95CP-W



40WP95CP-W



49WQ95C-W



Screen	Curved	Curved	Curved	Curved
Panel	5K2K WUHD Nano-IPS	WQHD+ Nano-IPS	5K2K WUHD Nano-IPS	Dual QHD Nano-IPS
Brightness	450 nits	450 nits	300 nits	400 nits
HDR	HDR 600	HDR 600	HDR 10	HDR 400
Color Coverage	DCI-P3 98%	DCI-P3 98%	DCI-P3 98%	DCI-P3 98%
Power Delivery	Thunderbolt 3 85W PD	Thunderbolt 3 94W PD	Thunderbolt 4 96W PD	USB-C 90W PD
Features	Tilt	Tilt, height, swivel	Tilt, height, swivel / Speakers	Tilt, height, swivel / Speakers

Life's Good.

Ergo Models

27UN880P-B 27QP88DP-B 28MQ780-B 32UN880P-B



Panel	4K IPS	QHD IPS	16:18 SDQHD Nano-IPS	4K IPS
Brightness	350 nits	350 nits	300 nits	350 nits
HDR	HDR 400	HDR 10	HDR 10	HDR 10
Color Coverage	sRGB 99%	sRGB 99%	DCI-P3 98%	DCI-P3 95%
Power Delivery	USB-C 60W	USB-C 65W PD	USB-C 90W PD	USB-C 60W PD

Mac Models

27MD5KLP-B



Panel	5K IPS
Brightness	500 nits
Color Coverage	DCI-P3 99%
Power Delivery	Thunderbolt 3 94W PD
Features	Tilt, height / Mac OS Compatibility / Speakers / Mic / Camera

Life's Good.

Medical Models

21HQ513D-B



Diagnostic

32HL512D-B



Diagnostic

27HJ710S-W



Surgical

27HK510S-W



Surgical

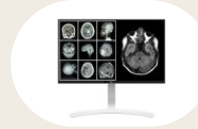
Panel	3MP 1536×2048 IPS	8MP 4K IPS	8MP 4K IPS	FHD IPS
Brightness	1100 nits	450 nits	800 nits	1000 nits
HDR	-	HDR 10	-	-
Color Coverage	-	DCI-P3 98%	sRGB 99% + Deep Red	sRGB 115% + Deep Red
Features	Focus View Mode, Lighting (Down/Wall) / Pathology / Pivot, tilt, height	Multi Resolution Mode, PBP / Dual Controller, Auto Luminance Calibration, Clinical Pathology Mode / Pivot, tilt, height	DICOM Part 14	Tilt, height, swivel

32HL710S-W



Surgical

27HJ712C-W



Clinical

27HJ713C-B



Clinical

31HN713D-BA



Mammo

Panel	8MP 4K IPS	8MP 4K IPS	8MP 4K IPS	12MP 4200×2800 IPS, Multi-resolution Mode (12/6MP)
Brightness	800 nits	350 nits	350 nits	1200 nits
HDR	HDR 10	-	-	-
Color Coverage	sRGB 115% + Deep Red	sRGB over 99%	sRGB 99%	sRGB 97%
Features	Mirror & Rotation Mode, Up to 4PBP / PIP	DICOM Part 14 / Pivot, tilt, height	DICOM Part 14 / Pivot, tilt, height, swivel	Pathology Mode, Focus View Mode, Lighting (Down/Wall) / Tilt, height, swivel

Life's Good.

Cloud Device Model

24CN650I-6N



All-in-One

24CN650N-6N



All-in-One

27CN650N-6N



All-in-One

Panel	FHD IPS	FHD IPS	FHD IPS
Brightness	250 nits	250 nits	300 nits
Processor	Quad-core processor	Quad-core	Quad-core
Camera	FHD Webcam with mic	FHD Webcam with mic	FHD Webcam with mic
RAM	4GB DDR4	4GB DDR4	4GB DDR4
Connectivity	-	-	-
Features	Pivot, tilt, height, swivel, adjustable / USB-C / Speakers / Internet / Fanless / IGEL OS Pre-installed	Pivot, tilt, height, swivel, adjustable / USB-C / Speakers / Internet / Fanless	Pivot, tilt, height, swivel, adjustable / USB-C / Speakers / Internet / Fanless

34CN650N-6N



All-in-One

CL600I-6N



Box-Type Thin Client

CL600N-6N



Box-Type Thin Client

CL600W-AP



Box-Type Thin Client

Panel	FHD IPS	-	-	-
Brightness	300 nits	-	-	-
Processor	Quad-core	Quad-core	Quad-core	Quad-core
Camera	FHD Webcam with mic	-	-	-
RAM	4GB DDR4	4GB DDR4	4GB DDR4	8GB DDR4
Connectivity	-	Support up to 3 display	Support up to 3 display	Support up to 3 display
Features	Tilt, height adjustable / USB-C / Speakers / Internet / Fanless	USB-C / Internet / Fanless / IGEL OS Pre-installed	USB-C / Internet / Fanless	USB-C / Internet / Fanless / Windows 10 IoT Enterprise LTSB

Life's Good.

LG's Commitment to the Environment.



Carbon Neutrality

LG Electronics aims to reduce its greenhouse gas emissions by improving its production processes, adopting energy-saving technologies, using renewable energy sources, and achieving carbon neutrality through carbon credits from the United Nations, etc. In addition, we aim to achieve RE100 (Renewable Energy 100%), which means obtaining 100% of our power consumption from renewable energy such as solar and wind power, by 2050.

220 000 tons
Reduction of carbon emissions
(compared to the previous year)

8,2%
Renewable power conversion

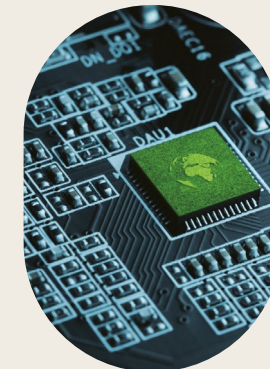


Circularity

LG Electronics collects and recycles electronic waste products over the globe and recycles them into products that consider the planet. LG Electronics uses recycled materials in its product manufacturing and packaging, and also campaigns to collect e-waste and batteries.

3,99 million tons
E-waste take-back
(accumulated from 2006)

94,5%
Waste recycling rate



Clean Technology

LG Electronics manufactures high-efficiency energy products in order to reduce functional unit of carbon emitted during its use. We have set a reduction target for carbon emissions generated from product use, and received the approval from the SBTi (Science Based Targets initiative).

59 000 tons
Recycled plastics
(accumulated from 2021)

13,1%
Reduction of functional unit
of Carbon emissions at use
stage* (compared to 2020)


*TV, Refrigerators, Washing Machines, Dryers, Residential Air Conditioner (RAC), System Air Conditioner (SAC), Monitors


Inquiry to Buy




DIGITAL SIGNAGE

 Michael Schmidt (michael.schmidt@lge-nordicteam.com)

 Maarit Salomaa (maarit.salomaa@lge.com)

 Kristian Behrens (kristian.behrens@lge.com)

 Stefan Skinner (stefan.skinner@lge.com)



HOSPITALITY TV

Fredrik Lundqvist (fredrik.lundqvist@lge.com)



DESKTOP MONITOR

Fredrik Lundqvist (fredrik.lundqvist@lge.com)



FIND OUT MORE

Register your inquiry to buy on the web.

Life's Good.