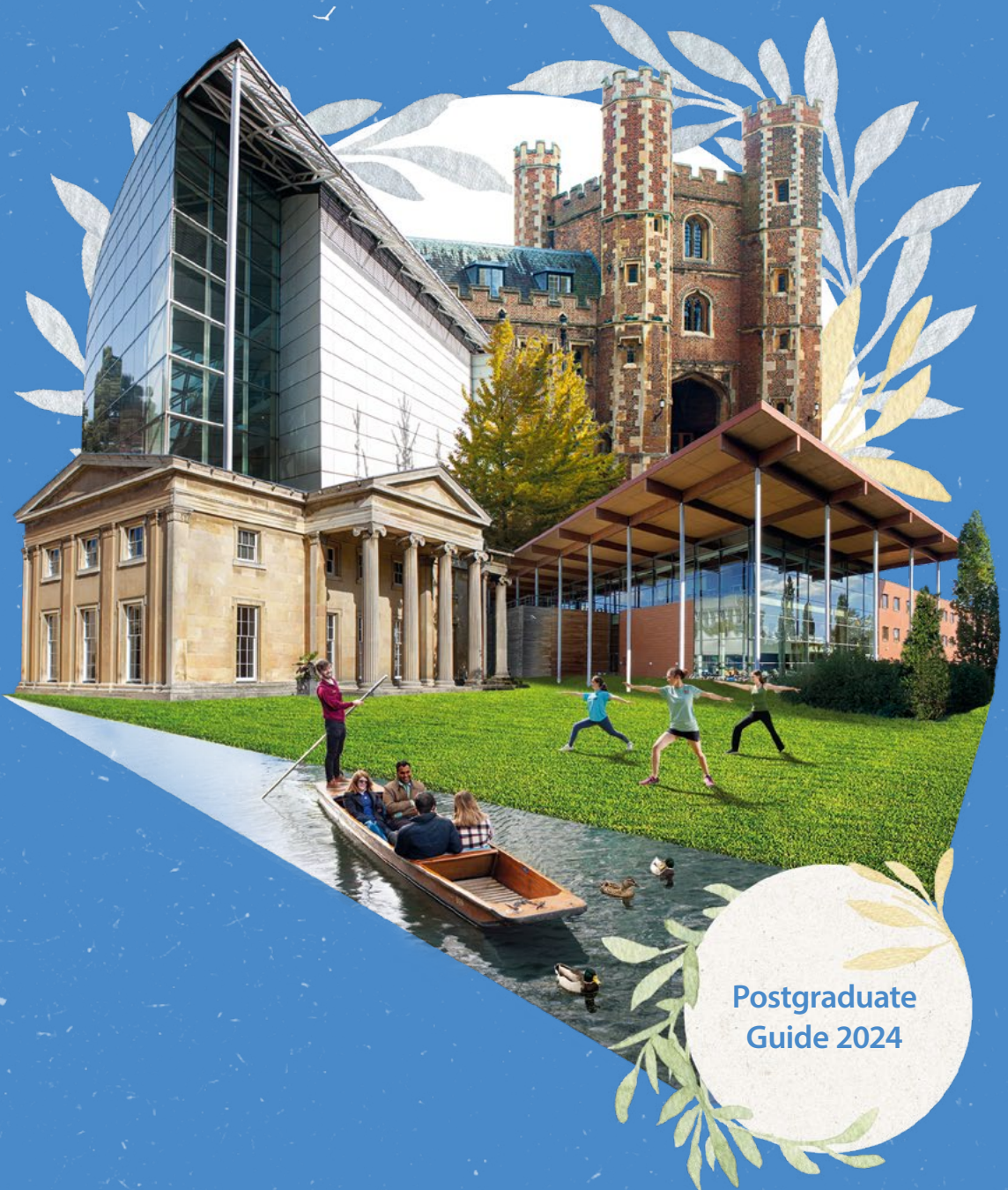




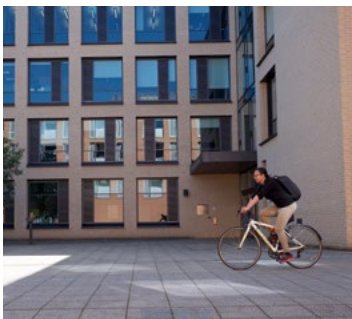
UNIVERSITY OF
CAMBRIDGE



Postgraduate
Guide 2024

Welcome to Cambridge

The University of Cambridge offers a world-leading postgraduate education. With a global outlook and reach, our mission is to contribute to society through the pursuit of education, learning and research at the highest international levels of excellence.



Top 10



One of the top 10 universities most often targeted by Britain's leading graduate employers (The Graduate Market in 2023)



93%



of Cambridge research has been recognised as 'world-leading' or 'internationally-excellent' (Research Excellence Framework 2021)

Image credit: Sir Cam



140+



countries represented among undergraduate and postgraduate students

Cambridge University provides the perfect environment to turn your dreams into reality. Having experienced a vibrant year here, I have found that Cambridge fosters an exceptionally welcoming culture and a strong foundation for those aiming to make a positive impact on the world.

At Cambridge, individuals with inspiring journeys from all over the world converge, united by a shared spirit to excel. Our dedicated academic staff take their role very seriously, guiding students to achieve remarkable feats in their chosen paths. Beyond studies, there are almost 600 societies for students to take part in.

Cambridge places great value on diversity and inclusion, supporting individuals from all backgrounds. There is lots of support available to students during their academic pursuits, including the Cambridge Students' Union.

As a first-generation and low-income student, I was encouraged to take chances and challenge the status quo. During my time at Cambridge, I realised that every single moment was unforgettable.



Vireesh Pratap

**Cambridge SU President
(Postgraduate)**

www.cambridgesu.co.uk

Postgraduate mailing list

Scan the QR code to sign up to our postgraduate mailing list:



Image credit: Robert Bye via Unsplash



Global impact

Research conducted at Cambridge has made an impact in over 100 countries across the world. You can find out more about where our research is having an impact by visiting impactmap.cam.ac.uk.

Applying to Cambridge

To apply to the University of Cambridge, you must submit an online application through the Applicant Portal on our Postgraduate Admissions website. Applications to our postgraduate courses open in early September each year with various deadlines throughout the year that you need to consider.

For a full list of application steps, visit www.postgraduate.study.cam.ac.uk/application-process.

1

Course

Before applying, you should thoroughly research your prospective course. For more information and a list of courses, visit www.cam.ac.uk/pgcourses.

2

Deadlines

There are two deadlines to consider: the course application deadline and the funding deadline. Please note, applications may close before the course deadline if all places have been filled, so we recommend applying as early as possible. If your course starts in Lent Term (January) or Easter Term (April), you may need to apply for funding 18 months in advance. For more details about application deadlines, visit www.cam.ac.uk/pg-deadlines.



5

Colleges

All postgraduates are a member of a College. In your application to Cambridge, you can indicate two College preferences or choose to make an open application to have a College allocated to you. For more information about Colleges, visit www.cam.ac.uk/pg-colleges.

6

Submit your application

Once you have finished writing your application, and all your documents are uploaded, your application is ready to be submitted and you will be asked to pay the application fee. You will not be able to edit your application once it has been submitted.

3

Applicant Portal

The Applicant Portal is where you write and submit your application. The Applicant Portal opens in September each year for admissions to the next academic year. For more information about the Applicant Portal, visit www.cam.ac.uk/pg-applicant-portal.

4

References

You are required to submit two references, which you can request and submit via the Applicant Portal. For more details about references, visit www.cam.ac.uk/pg-references.



7

Interview

Most departments and faculties will often want to interview you if your application is progressed to the next stage in the admissions process. Most interviews are conducted in person, via video conferencing, or telephone.

After applying: what happens next?

Scan the QR code to view what happens after your application is submitted.





Finance and funding

The cost of studying at the University of Cambridge is broken down into two areas:

1. University Composition Fee (UCF)

The UCF is paid to your College to cover the cost of your education and College membership. The value is dependent on your fee status (home/overseas) and course of study.

2. Maintenance

'Maintenance' refers to the absolute minimum estimated living costs that you'll need to have available during your time at the University. You won't need to pay anyone this amount, but you do need to make sure you have these funds available to support yourself and any dependants for the duration of your studies.

When considering postgraduate study at the University, you may find it helpful to look at the estimated annual financial commitment for your course, which you can calculate on our website:



www.postgraduate.study.cam.ac.uk/finance



Applying for funding at Cambridge

Every year the University awards over £100m in scholarships to new postgraduate students.

Funding is a key part of applying for postgraduate study at Cambridge, as this is usually awarded separately. More details about funding can be found at

www.cam.ac.uk/pg-funding.

There are several different ways to apply for University funding. Different funding deadlines apply depending on which course you're applying for (and if you're a US citizen applying for a Gates Scholarship). For full details about the ways you can apply for funding, visit www.cam.ac.uk/pg-apply-funding.



Courses

With more than 300 postgraduate courses on offer at Cambridge, including taught and research opportunities across an incredibly broad range of academic disciplines, you can choose a course that suits your subject and research interests. You will be taught by academics who are prominent experts and leaders in their field, and your department or faculty will assign you a personal supervisor whose role is to guide your programme of study or research.



Master's at Cambridge

At Cambridge, the majority of our Master's degrees lead to a Master of Philosophy (MPhil). There are two types of MPhil on offer at Cambridge:

- **The MPhil by Advanced Study**
- **The MPhil by Research**

MPhil students are introduced to specialist knowledge and research skills by gaining valuable experience in preparing and producing a research dissertation. Both types of MPhil provide excellent preparation for full-scale PhD research.

We also offer other Postgraduate qualifications including the Master of Research (MRes), Master of Studies (MSt), Postgraduate Certificate and Postgraduate Diploma. To find out more about these, visit www.cam.ac.uk/pg-course-types.



PhD Research

The Doctor of Philosophy (PhD) is the principal research degree at Cambridge and is available in all faculties and departments. As a doctoral student, you will be focused on research which represents a significant contribution to learning, and you will work on this research in a department or faculty which is internationally renowned for the originality and global significance of its advances in theories and knowledge.

To find out more and for a full list of courses available at Cambridge, visit www.cam.ac.uk/pgcourses.

"What I enjoy the most here is the access to a large amount of training. Also, the visiting scholars that this university attracts make the discussion much more interesting."

Simon

PhD in Theoretical Chemistry

Colleges

At Cambridge, as well as being a member of the University, you are also a member of one of our 31 Colleges.

Cambridge Colleges form one of the key communities for postgraduates during their studies, offering a range of academic and pastoral support, accommodation and facilities for study and leisure. If you have been made a formal offer of admission to the University by the department/faculty you applied to, you are guaranteed to be accepted by a College.

College choice

As part of your application, you can indicate two College preferences or you can choose to make an open application, which means that the system will automatically allocate College choices for you. Although over 75% of postgraduate students at Cambridge become a member of their preference choices, you may be considered by up to five Colleges.

The first two Colleges will be the preferences indicated in your application or the two Colleges assigned to you if you made an open application. If you are not accepted by either of your preference Colleges, the additional Colleges will be determined based on the availability of spaces within a College.

Choosing a College

For guidance on how to choose a College, visit www.cam.ac.uk/pg-colleges. There is also lots of information on the Colleges' websites to help you narrow down your College choices.

Many full-time postgraduates live in College accommodation, but few Colleges are able to house all their student members and so accommodation tends to be offered on a first-come first-served basis. For more details, visit www.postgraduate.study.cam.ac.uk/terms-residence.



"I have found the community at my College and Faculty to be welcoming, and this was an extremely helpful resource and I now consider Cambridge to be a second home."

Tanya
Toronto, Canada





Student life in Cambridge

"One thing I do love about Cambridge is the variety of niche-interest clubs available - the only difficulty is not doing too many things!"

Lee

PhD in Anglo-Saxon, Norse and Celtic

Student societies

All students at Cambridge are able to take full advantage of the clubs and societies on offer at the University, and our postgraduate students can get involved in all aspects of student life here beyond their academic studies.

At Cambridge, there are hundreds of student groups, clubs and societies. See the full range on the Societies Directory: www.cambridgesu.co.uk/opportunities/societies.

Entertainment and leisure

However you like to spend your time, there's always something to keep you entertained. Cambridge has theatres, cinemas and entertainment venues offering varied programmes that include comedy, drama, dance, concerts and club nights. Live music is also a big part of life in both the city and University, from buskers and pub gigs, to classical concerts and big name acts.

Cambridge has a great range of pubs, bars and cafés, from traditional pubs with open fires to modern bars overlooking the river. There's a great selection of places to eat for any mood, taste, occasion, and budget. Better still, various cafés and restaurants offer special discounts for students.

Cambridge's shopping centres, market and central streets house most high street names alongside independent shops and boutiques. Just outside the centre, you can find an eclectic mix of international shops, cafés and restaurants.

Sport

The sports scene at Cambridge is huge. More than 80 sports are offered here, including team games, water sports, martial arts, racket sports and extreme sports. Many clubs and groups offer taster sessions at the beginning of each year so you can try them out and find out more.



www.sport.cam.ac.uk

Outside the city

If you want to explore further afield, Cambridge has direct rail links to London, Brighton and Birmingham, and there's also plenty to discover in the region including walking and cycling routes, historical buildings, gardens and museums, nature reserves, wildlife parks, coastlines and more.



International students

We are proud of our diverse student community, with more than 40% of postgraduate students coming from overseas, representing more than 140 countries around the globe.

Applying with non-UK qualifications

We accept a large number of qualifications from around the world. If you have not previously studied in the UK, you can check the equivalence qualifications guidelines for your country in the International section of the Postgraduate Admissions website.

www.postgraduate.study.cam.ac.uk/international-qualifications

English language requirements

If English is not your first language, you may be required to take a language test. You can check whether you are likely to be asked to take a language test, which language tests your course accepts, and the minimum required score in the International section of the Postgraduate Admissions website.

www.postgraduate.study.cam.ac.uk/international/competence-english



Find out more

International Student Recruitment

Advice on applying to the University
www.postgraduate.study.cam.ac.uk/application-process

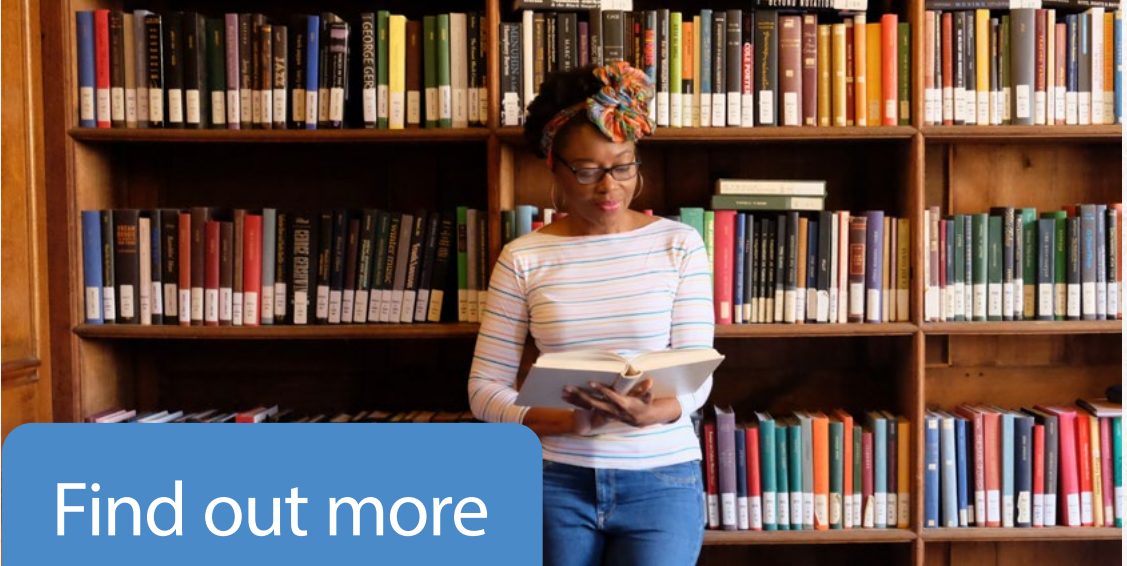
International Student Office

Advice on visas and immigration
www.internationalstudents.cam.ac.uk

Unibuddy

Scan the QR code to chat with current students from across the world:





Find out more

Student support

There is a wide range of support available to students at Cambridge including academic and accommodation support, accessibility and disability services, counselling, childcare support and information for student communities.

For more information, visit www.postgraduate.study.cam.ac.uk/support.


Postgraduate events

The University hosts and attends various fairs and events throughout the year, both in the UK and internationally. The University also offers Virtual Open Days in November each year, with Warm-up Webinars taking place from August to October.

For more information about upcoming events, visit www.postgraduate.study.cam.ac.uk/events.

Frequently asked questions?

Scan the QR code to find a full list of FAQs. You can also submit any questions you may have here.

 www.cam.ac.uk/pgfaq



Videos

Scan the QR code below to access all of our postgraduate study videos, including videos created by and featuring our current and past postgraduate students.







UNIVERSITY OF
CAMBRIDGE


Postgraduate Admissions Office

Student Services Centre
New Museums Site
Cambridge CB2 3PT

 www.postgraduate.study.cam.ac.uk
www.postgraduate.study.cam.ac.uk/contact-form

 [cambridge.university](https://www.facebook.com/cambridge.university)  [cambridgeuniversity](https://www.instagram.com/cambridgeuniversity)

 www.youtube.com/CambridgeUniversity

 [Cambridge_Uni](https://twitter.com/Cambridge_Uni)

Details are correct at the time of publication (August 2023) but should be checked against the Postgraduate Study website for the most up-to-date information.

© University of Cambridge, 2023

