



ENSURE SUSTAINABLE CONSUMPTION AND PRODUCTION PATTERNS

BEFORE COVID-19

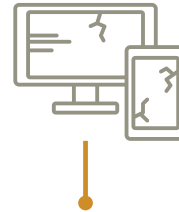
THE WORLD CONTINUES TO USE NATURAL RESOURCES **UNSUSTAINABLY**



GLOBAL MATERIAL FOOTPRINT
73.2 BILLION METRIC TONS



GLOBAL MATERIAL FOOTPRINT
85.9 BILLION METRIC TONS



ELECTRONIC WASTE GREW BY 38%



BUT LESS THAN 20% IS RECYCLED
(2010-2019)

COVID-19 IMPLICATIONS

THE PANDEMIC OFFERS AN OPPORTUNITY TO **DEVELOP RECOVERY PLANS** THAT BUILD A MORE SUSTAINABLE FUTURE



FROM 2017 TO 2019, 79 COUNTRIES AND THE EUROPEAN UNION REPORTED AT LEAST ONE POLICY TO PROMOTE SUSTAINABLE CONSUMPTION AND PRODUCTION



RISING FOSSIL FUEL SUBSIDIES ARE CONTRIBUTING TO THE CLIMATE CRISIS

\$318 BILLION
(2015)

\$427 BILLION
(2018)



HARVESTING



TRANSPORT



STORAGE



PROCESSING

13.8%

OF FOOD IS LOST IN SUPPLY CHAINS (2016)



SUSTAINABLE DEVELOPMENT GOALS