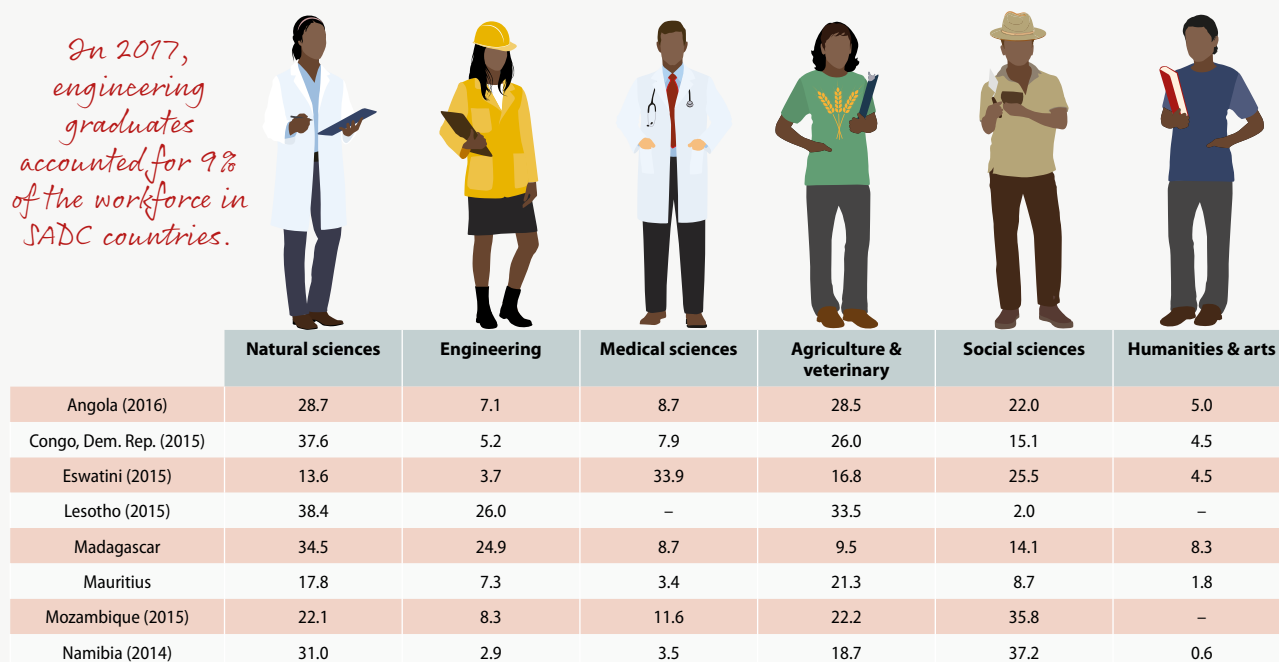




Figure 20.5: Trends in researchers in Southern Africa

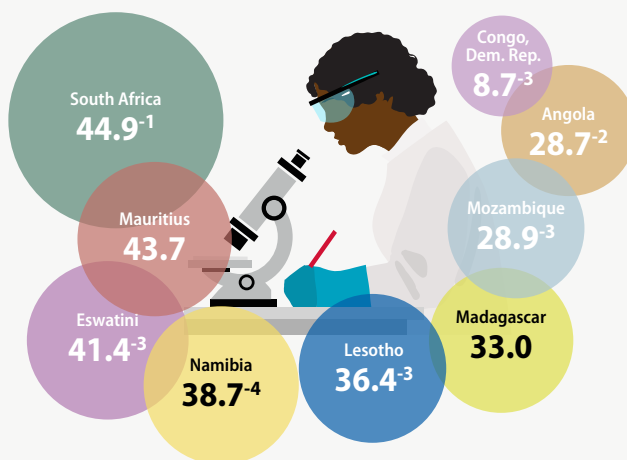
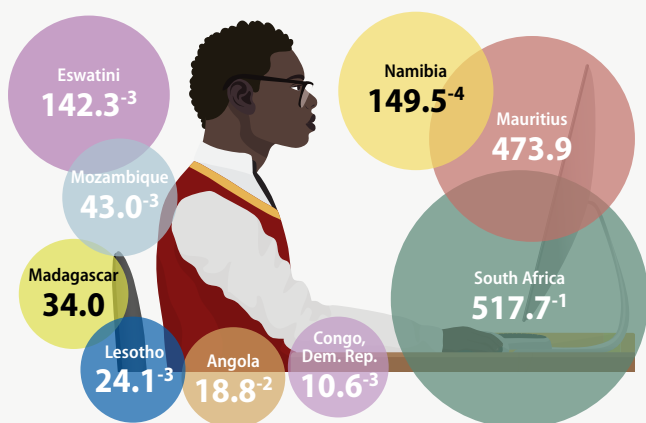
Researchers (FTE) in Southern Africa by field, 2017 or closest year (%)



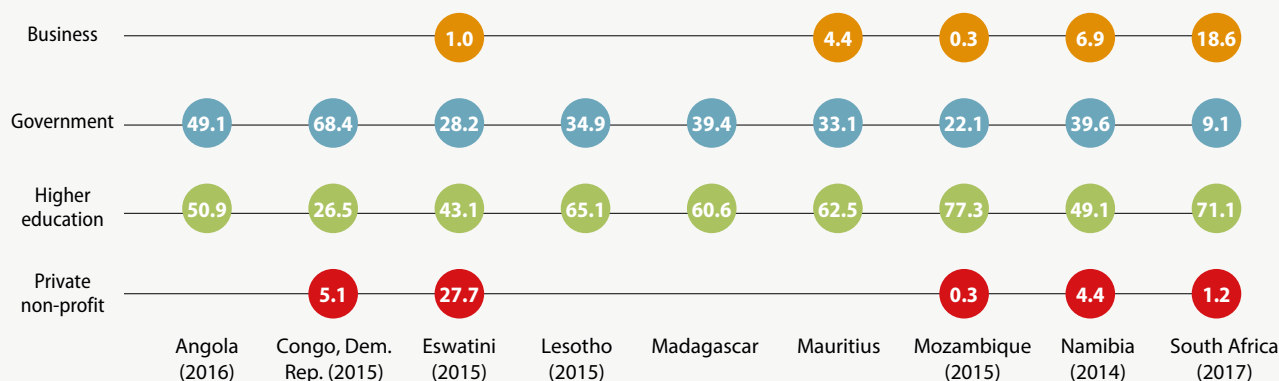
In 2017, the number of practicing engineers ranged from 18 to 531 per 100 000 inhabitants in SADC countries; the average was 68 per 100 000 inhabitants.

Researchers (FTE) in Southern Africa per million inhabitants, 2018

Share of female researchers (HC) in Southern Africa, 2018 (%)



Researchers (FTE) in Southern Africa by sector of employment, 2018 or closest year (%)



-n: data refer to n years before reference year

Note: Data are unavailable for some countries.

Source: UNESCO Institute for Statistics; for engineering workforce: Lawless (2019)